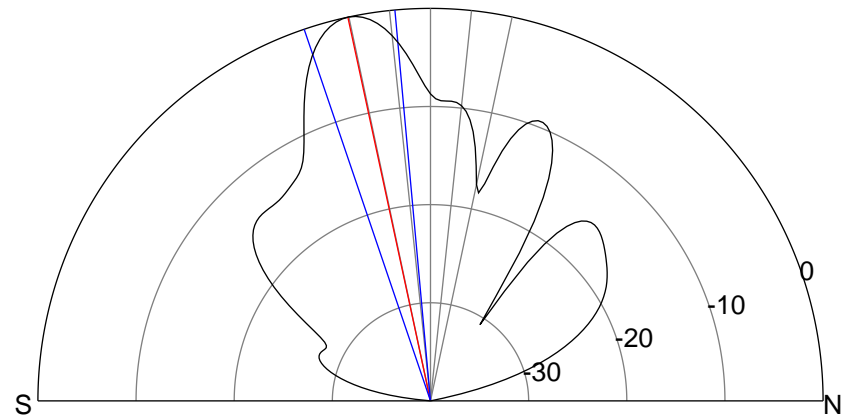
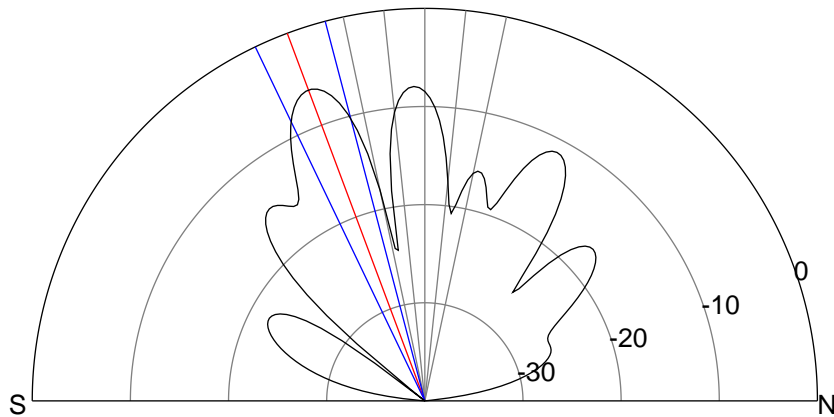
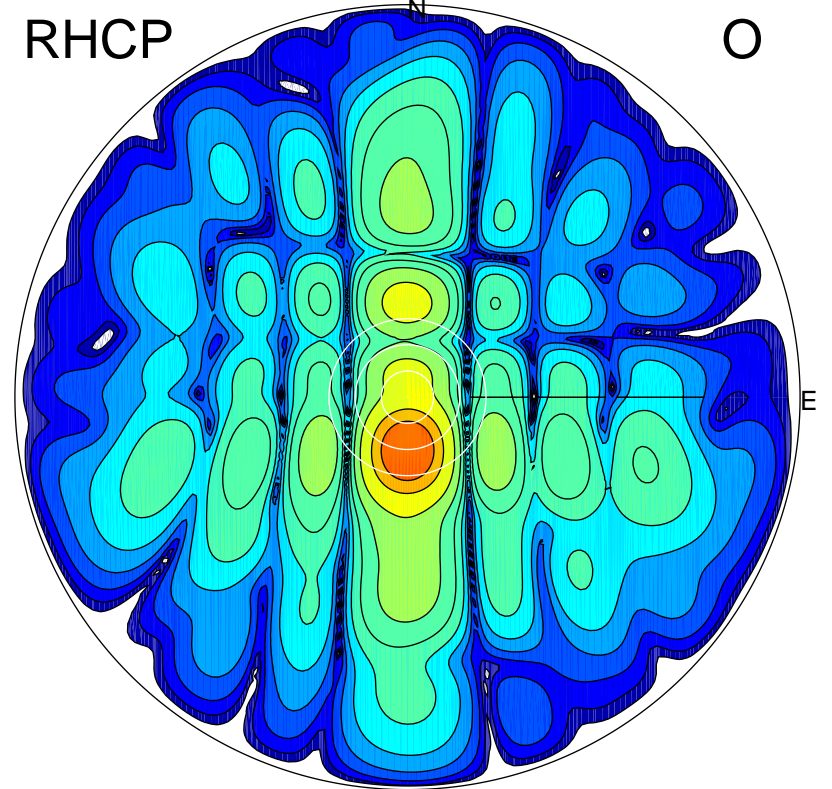
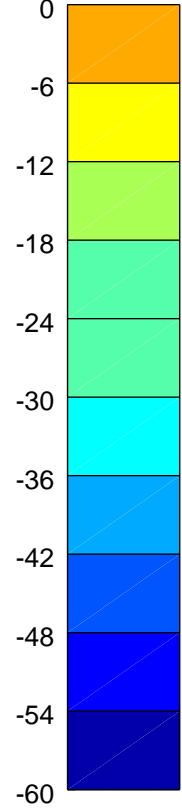
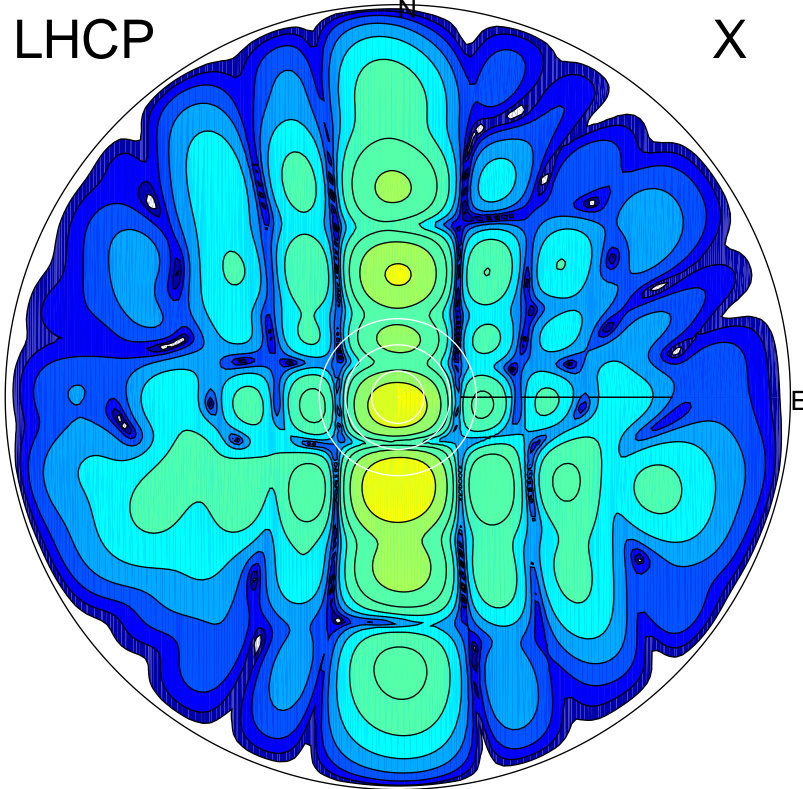


2014-03-11 13:00:15 A3 6.70280400 MHz 462.0 kW



ERP 14.1 MW

Peak gain 14.9 dBi at Az 180 Zen 21
RHCP gain 16.3 dBi
N-S peak 14.9 dBi at Zen -20.5
N-S -3 dB beamwidth 10.9 deg.

ERP 58.9 MW

Peak gain 21.1 dBi at Az 180 Zen 12
LHCP gain 3.0 dBi
N-S peak 21.1 dBi at Zen -12.2
N-S -3 dB beamwidth 13.6 deg.