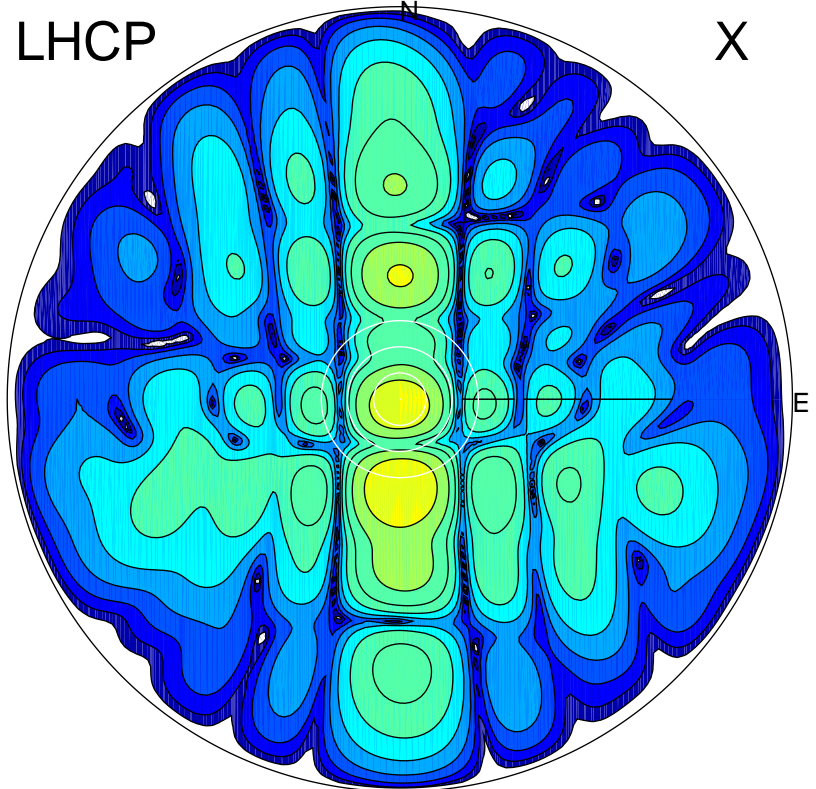


2014-03-11 13:00:05 A3 6.70000000 MHz 305.0 kW

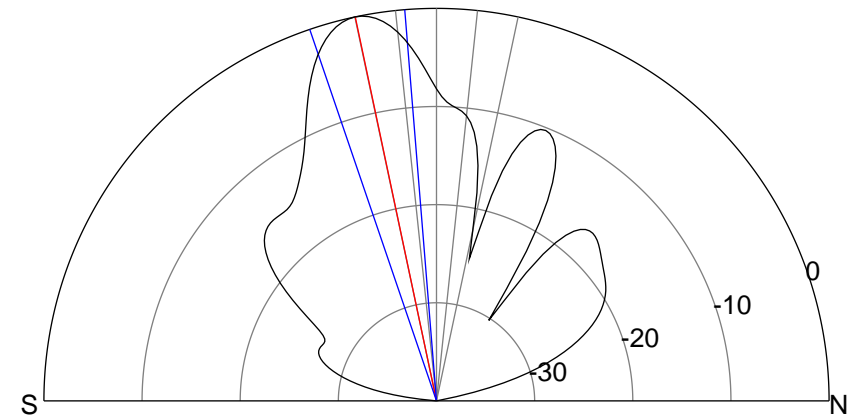
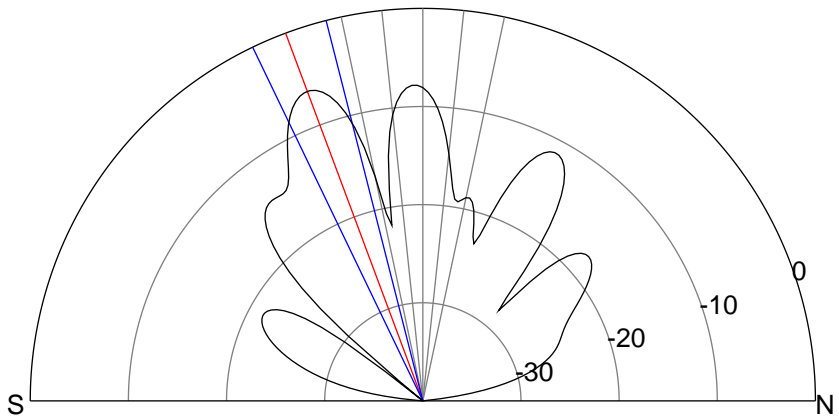
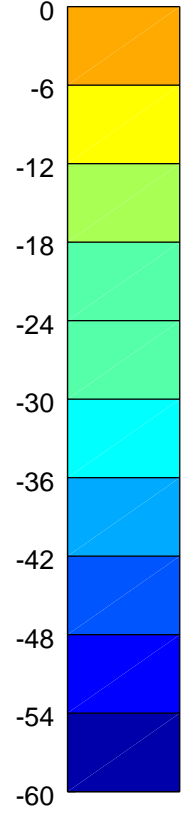
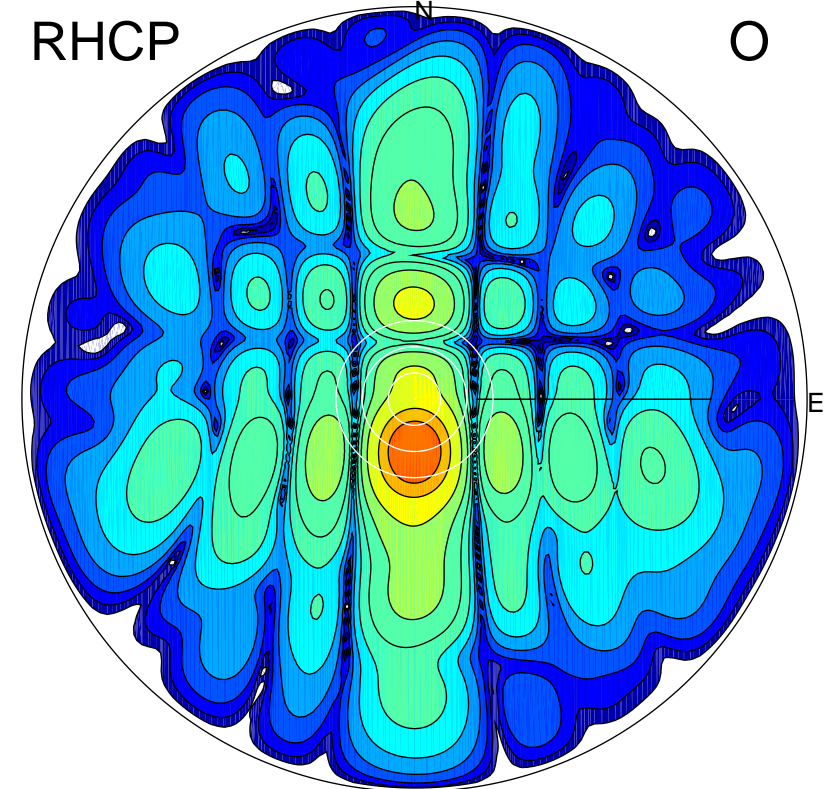
LHCP

X



RHCP

O



ERP 9.0 MW

Peak gain 14.7 dBi at Az 179 Zen 21
RHCP gain 16.5 dBi
N-S peak 14.7 dBi at Zen -20.5
N-S -3 dB beamwidth 11.4 deg.

ERP 38.7 MW

Peak gain 21.0 dBi at Az 181 Zen 12
LHCP gain 4.4 dBi
N-S peak 21.0 dBi at Zen -11.9
N-S -3 dB beamwidth 14.2 deg.