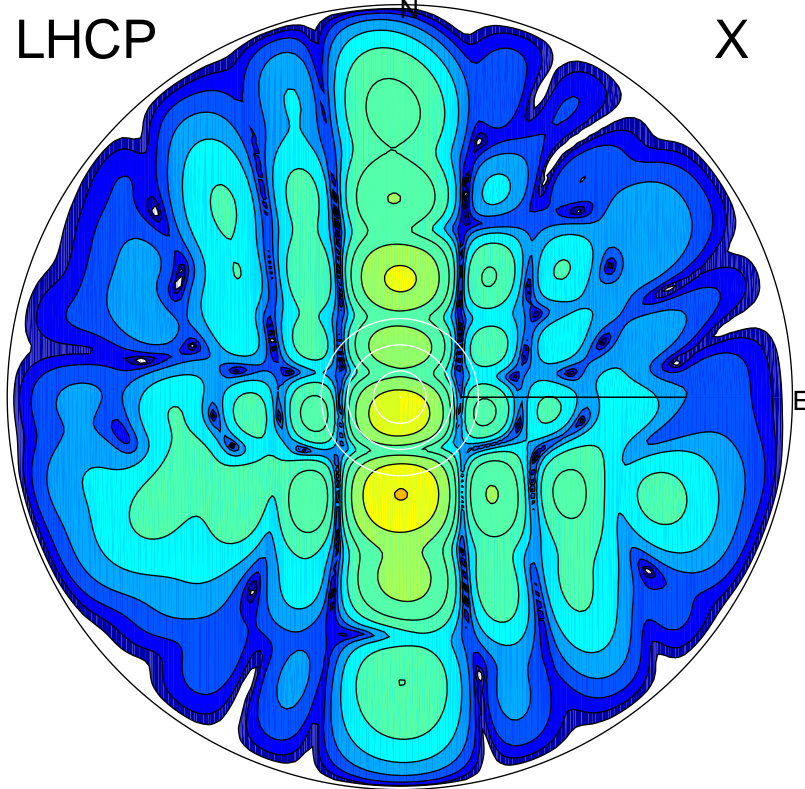


2014-03-11 12:47:55 A3 6.70000000 MHz 458.0 kW

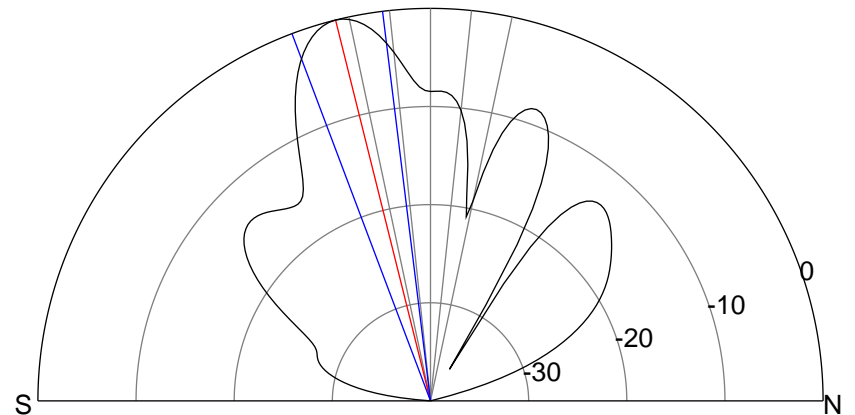
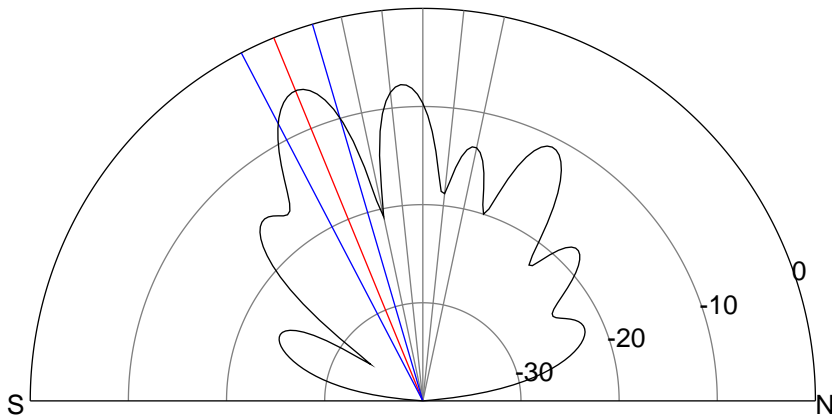
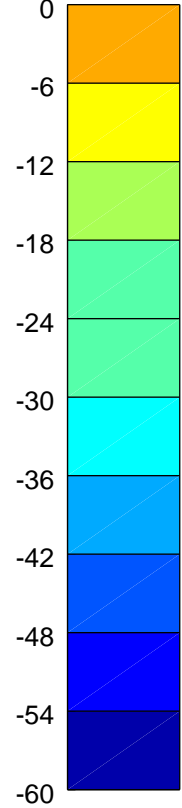
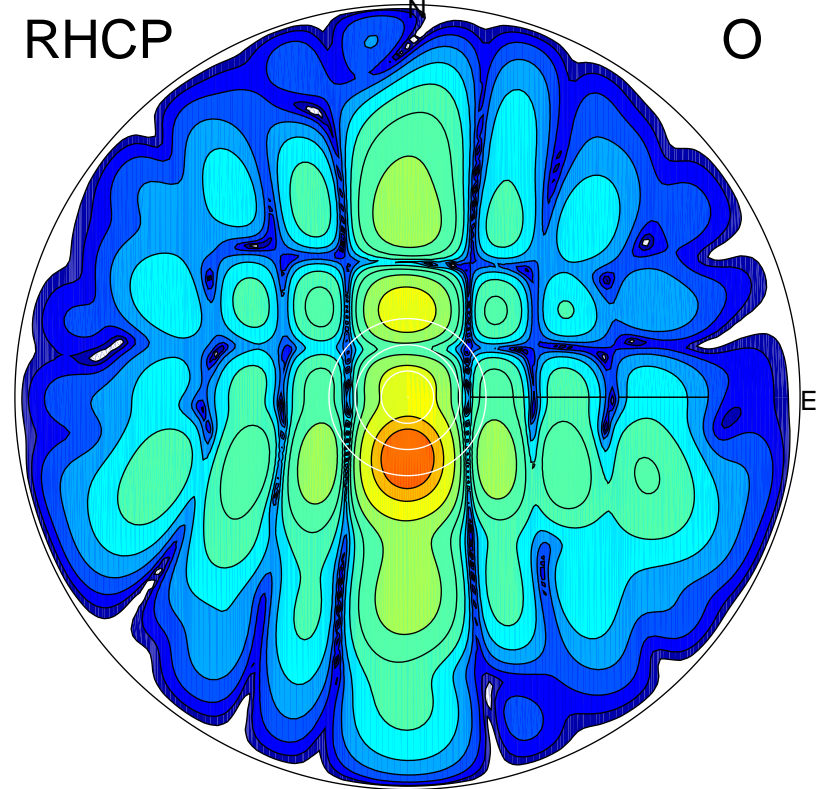
LHCP

X



RHCP

O



ERP 14.5 MW

Peak gain 15.0 dBi at Az 179 Zen 22
RHCP gain 16.9 dBi
N-S peak 15.0 dBi at Zen -22.3
N-S -3 dB beamwidth 11.2 deg.

ERP 55.6 MW

Peak gain 20.8 dBi at Az 180 Zen 14
LHCP gain 5.4 dBi
N-S peak 20.8 dBi at Zen -14.0
N-S -3 dB beamwidth 13.6 deg.