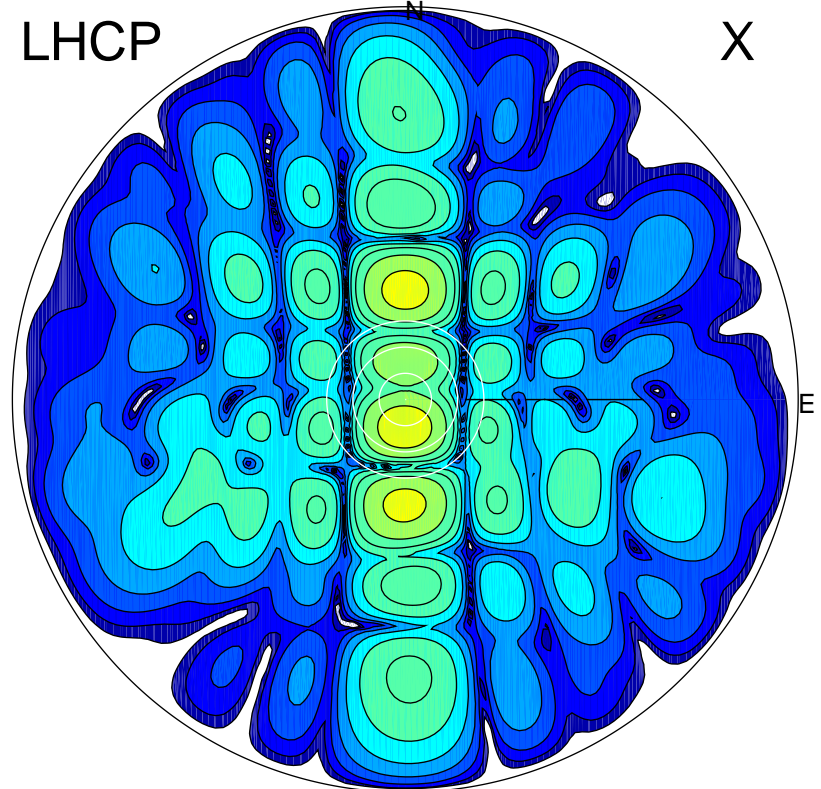


2014-03-11 12:39:55 A3 6.83457900 MHz 489.0 kW

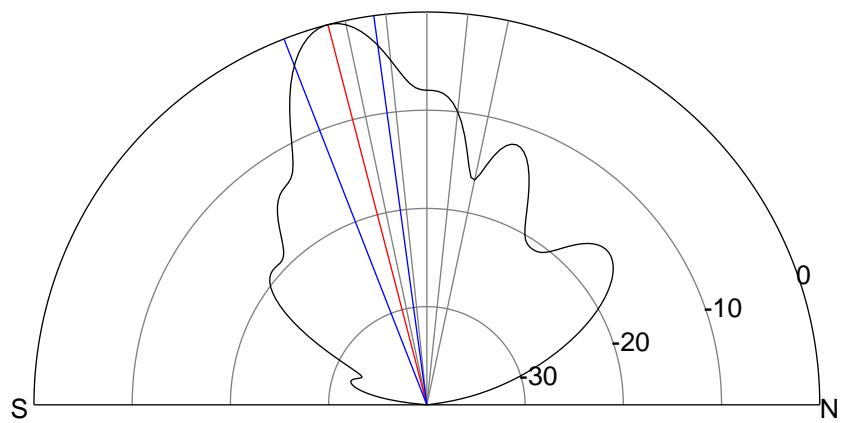
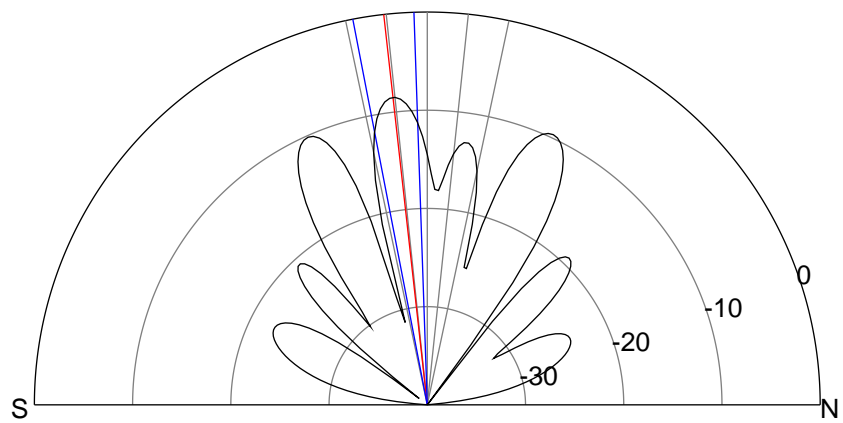
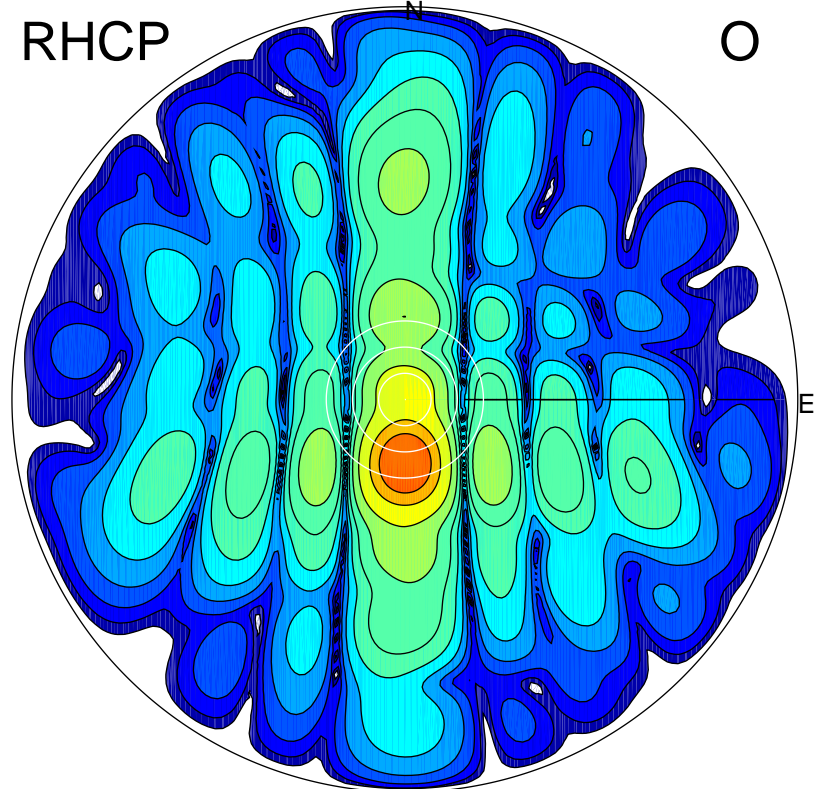
LHCP

X



RHCP

O



ERP 9.9 MW

Peak gain 13.1 dBi at Az 180 Zen 6
RHCP gain 16.9 dBi
N-S peak 13.1 dBi at Zen -6.4
N-S -3 dB beamwidth 9.0 deg.

ERP 70.7 MW

Peak gain 21.6 dBi at Az 180 Zen 15
LHCP gain -9.7 dBi
N-S peak 21.6 dBi at Zen -14.6
N-S -3 dB beamwidth 13.6 deg.