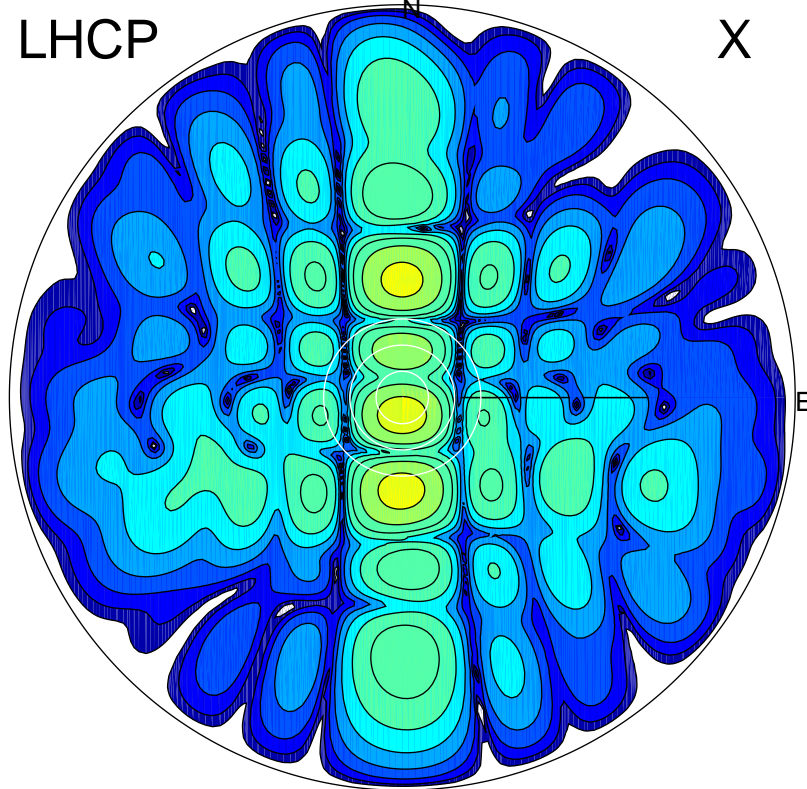


2014-03-11 12:34:55 A3 6.91869200 MHz 492.0 kW

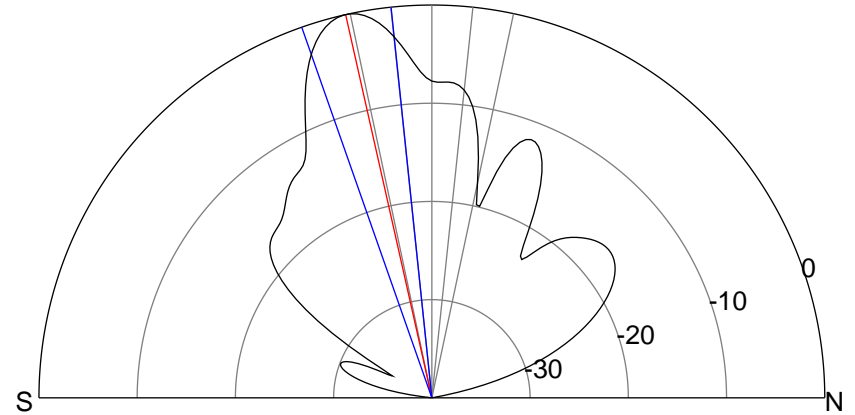
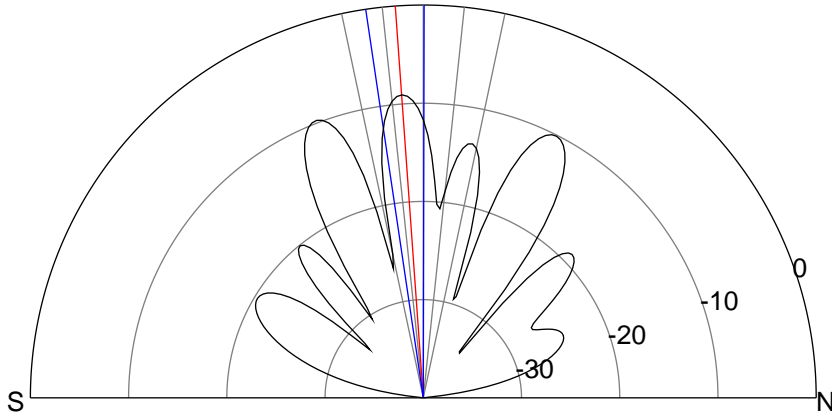
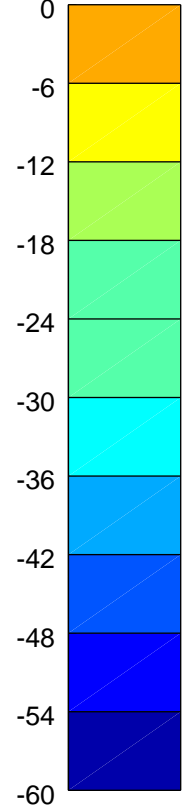
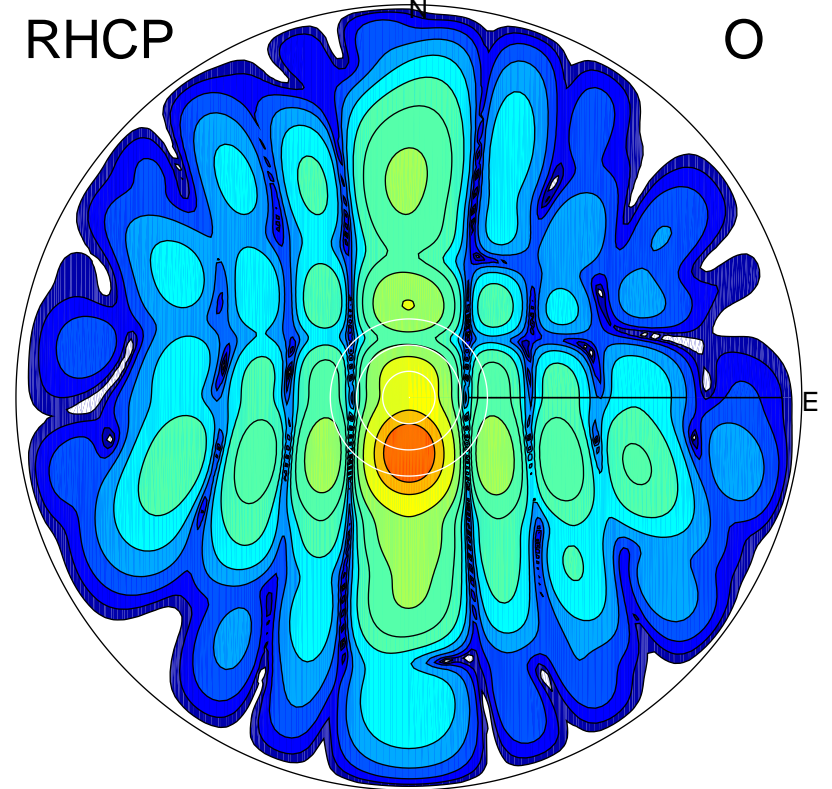
LHCP

X



RHCP

O



ERP 9.1 MW

Peak gain 12.7 dBi at Az 181 Zen 4
RHCP gain 16.8 dBi
N-S peak 12.7 dBi at Zen -4.1
N-S -3 dB beamwidth 8.6 deg.

ERP 73.2 MW

Peak gain 21.7 dBi at Az 181 Zen 13
LHCP gain -4.8 dBi
N-S peak 21.7 dBi at Zen -12.7
N-S -3 dB beamwidth 13.4 deg.