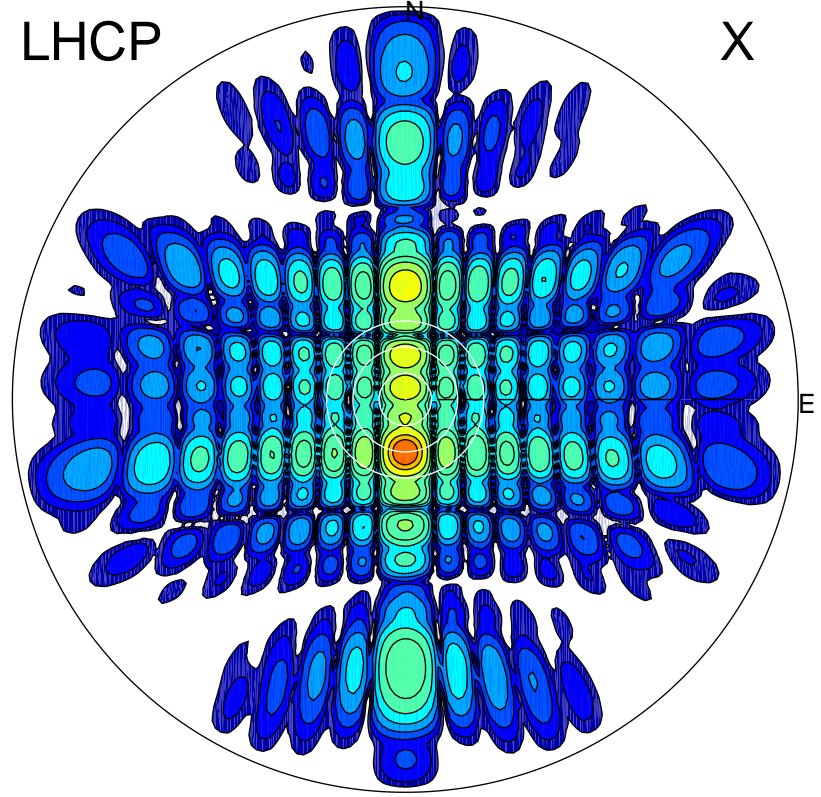


2013-10-25 15:50:45 A1 6.99500000 MHz 796.0 kW

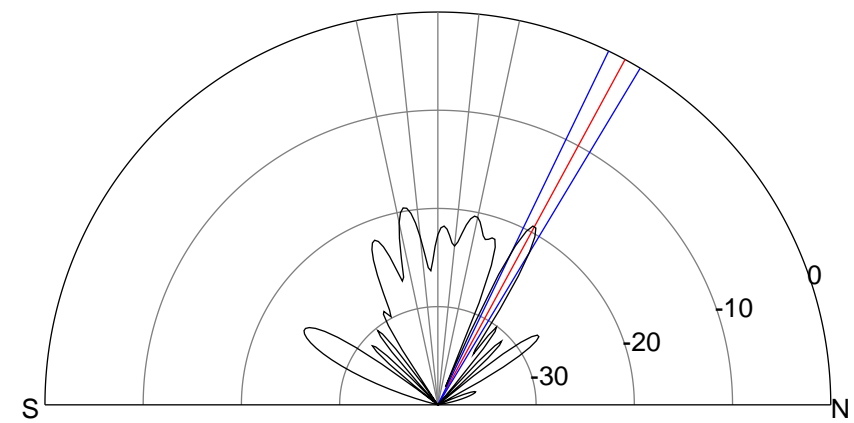
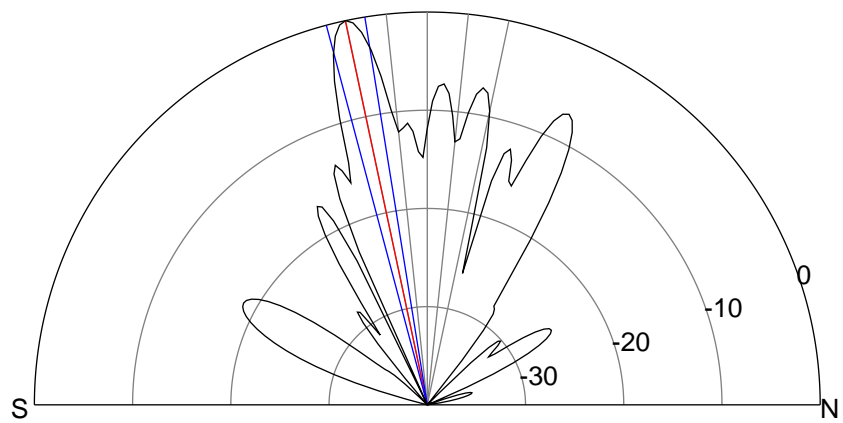
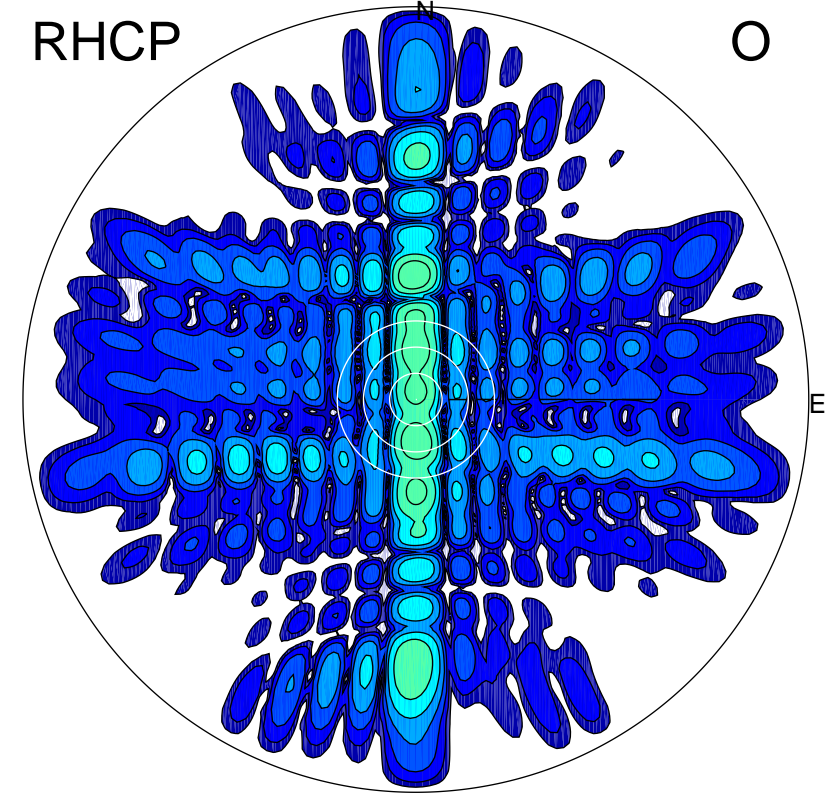
LHCP

X



RHCP

O



ERP 499.0 MW

Peak gain 28.0 dBi at Az 180 Zen 12
RHCP gain 6.9 dBi
N-S peak 28.0 dBi at Zen -12.1
N-S -3 dB beamwidth 5.7 deg.

ERP 5.8 MW

Peak gain 8.7 dBi at Az 359 Zen 28
LHCP gain 19.3 dBi
N-S peak 8.7 dBi at Zen 28.5
N-S -3 dB beamwidth 5.2 deg.