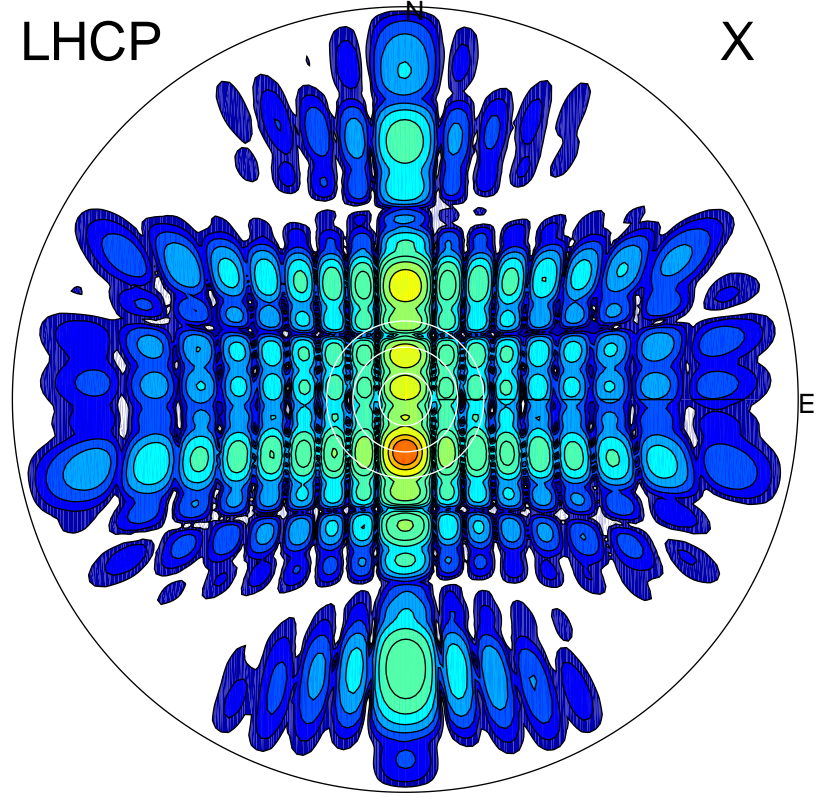


2013-10-25 15:50:05 A1 6.98500000 MHz 798.0 kW

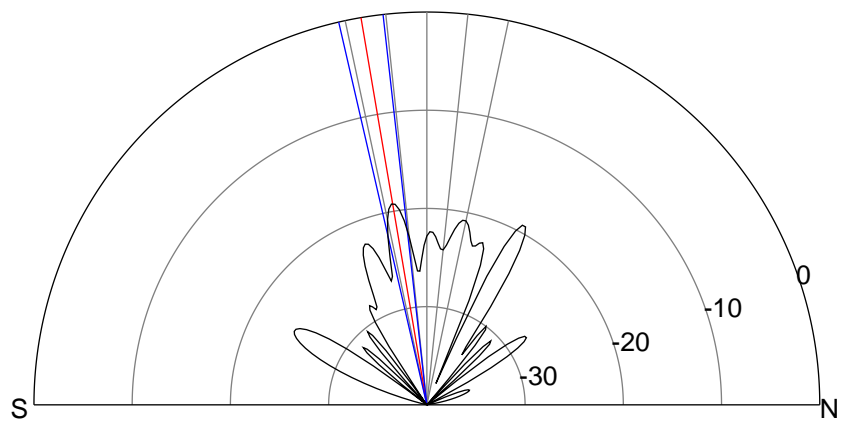
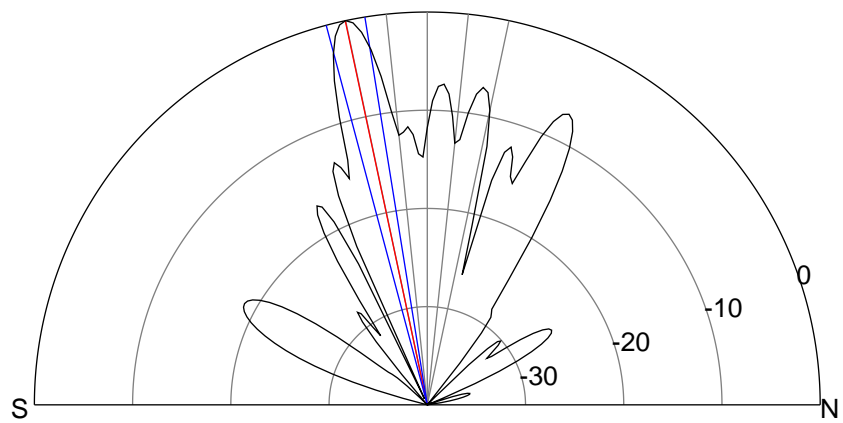
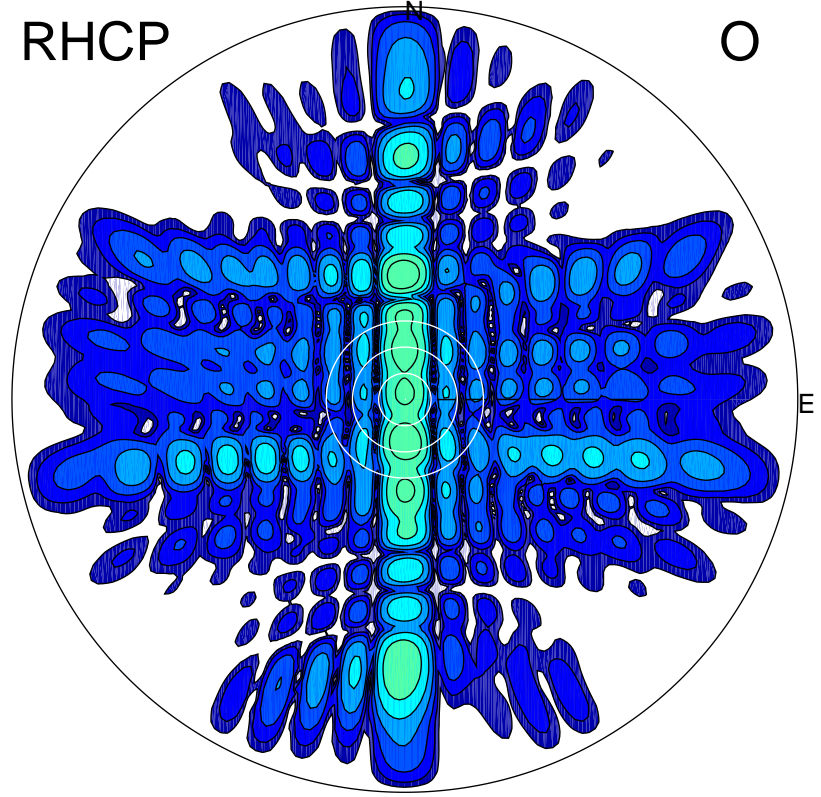
LHCP

X



RHCP

O



ERP 498.8 MW

Peak gain 28.0 dBi at Az 180 Zen 12
RHCP gain 7.2 dBi
N-S peak 28.0 dBi at Zen -12.1
N-S -3 dB beamwidth 5.8 deg.

ERP 6.0 MW

Peak gain 8.7 dBi at Az 179 Zen 10
LHCP gain 26.5 dBi
N-S peak 8.8 dBi at Zen -9.7
N-S -3 dB beamwidth 6.6 deg.