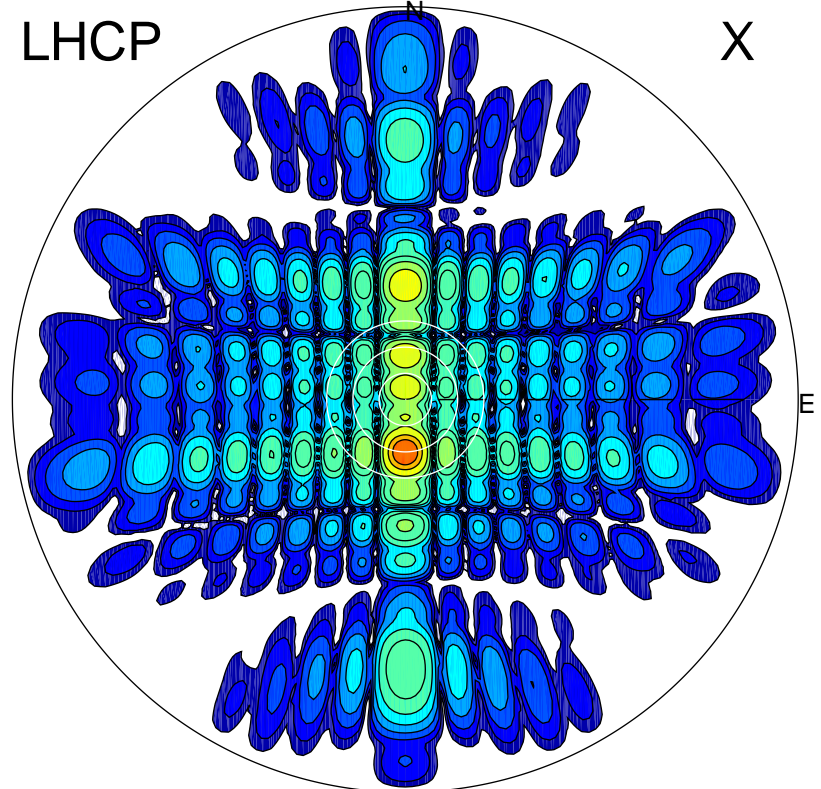


2013-10-25 15:49:25 A1 6.97500000 MHz 797.0 kW

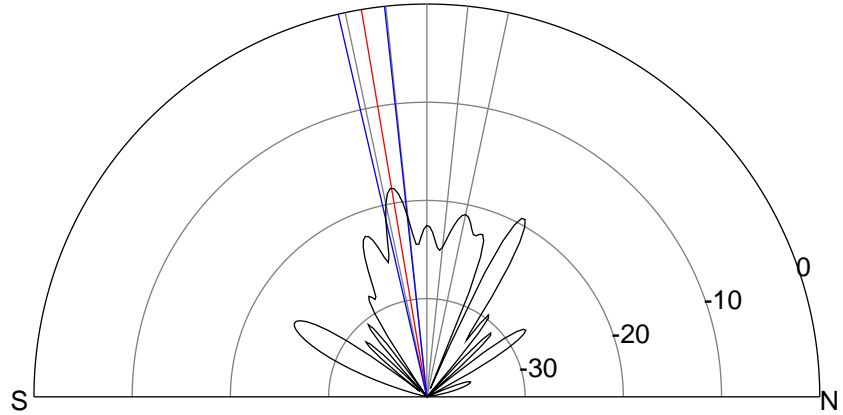
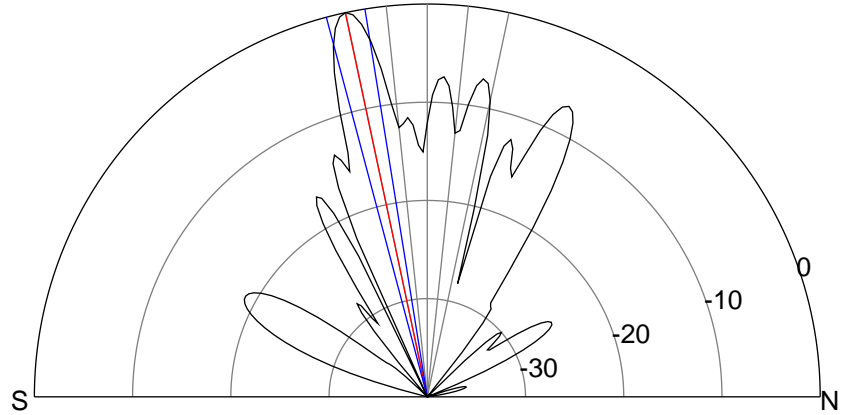
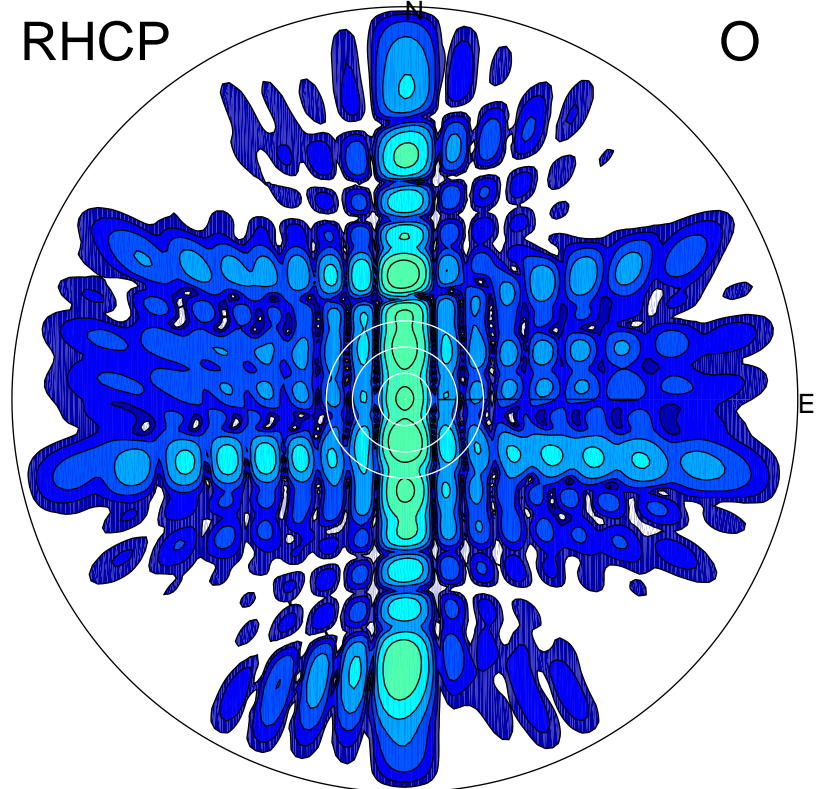
LHCP

X



RHCP

O



ERP 497.3 MW

Peak gain 28.0 dBi at Az 180 Zen 12
RHCP gain 8.0 dBi
N-S peak 28.0 dBi at Zen -12.0
N-S -3 dB beamwidth 5.8 deg.

ERP 7.1 MW

Peak gain 9.5 dBi at Az 179 Zen 10
LHCP gain 26.5 dBi
N-S peak 9.5 dBi at Zen -9.6
N-S -3 dB beamwidth 6.8 deg.