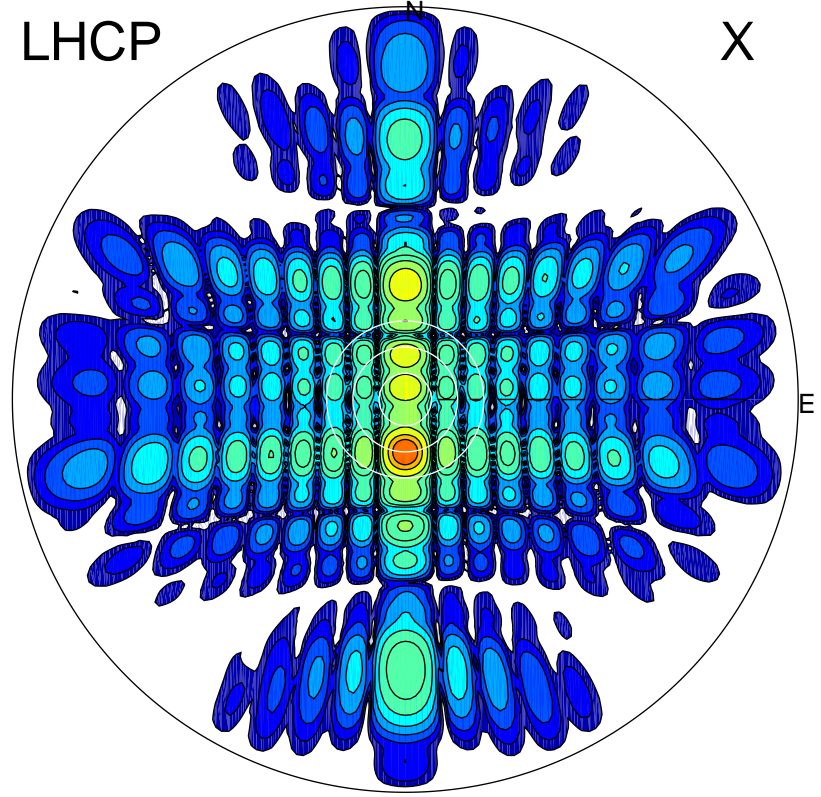


2013-10-25 15:48:05 A1 6.95500000 MHz 796.0 kW

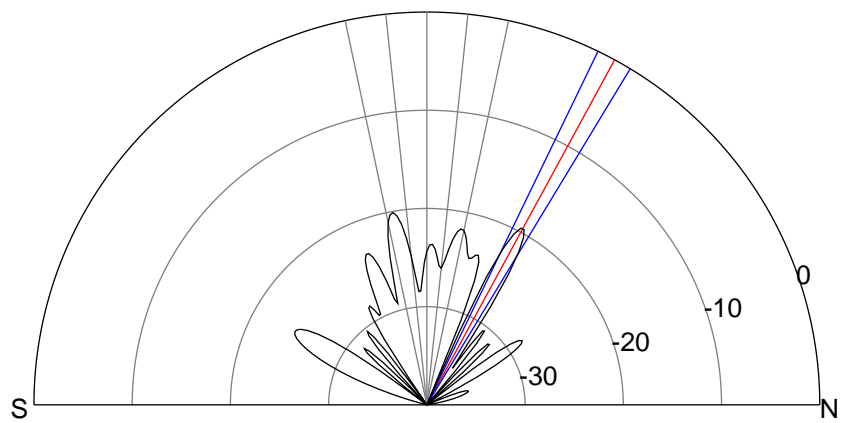
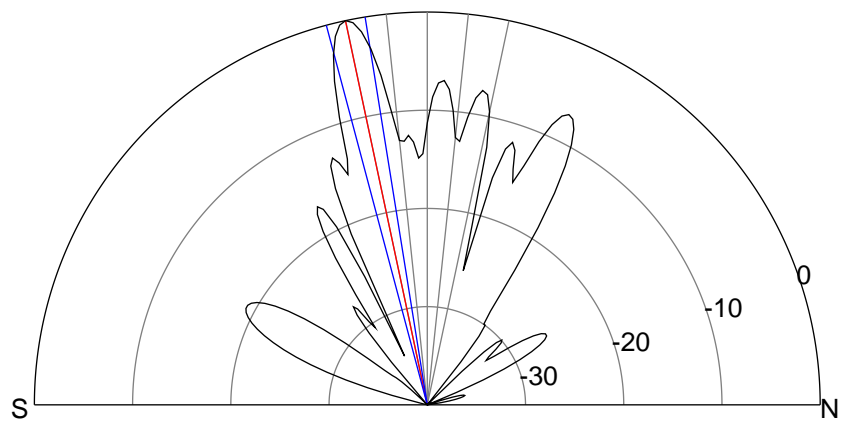
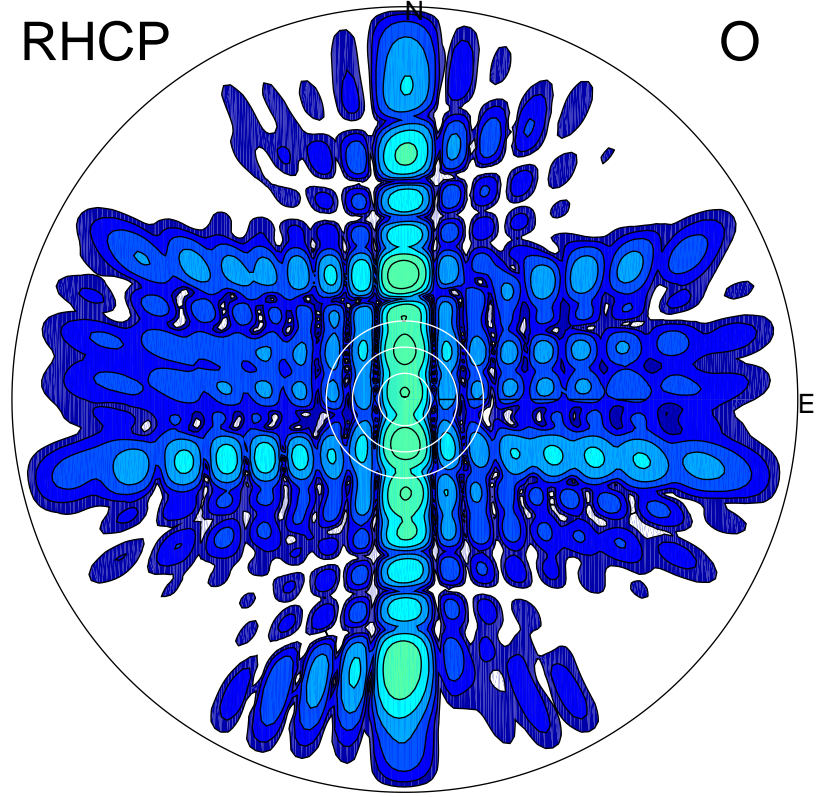
LHCP

X



RHCP

O



ERP 496.4 MW

Peak gain 27.9 dBi at Az 180 Zen 12
RHCP gain 6.9 dBi
N-S peak 27.9 dBi at Zen -12.0
N-S -3 dB beamwidth 5.8 deg.

ERP 5.5 MW

Peak gain 8.4 dBi at Az 359 Zen 29
LHCP gain 18.1 dBi
N-S peak 8.4 dBi at Zen 28.6
N-S -3 dB beamwidth 5.3 deg.