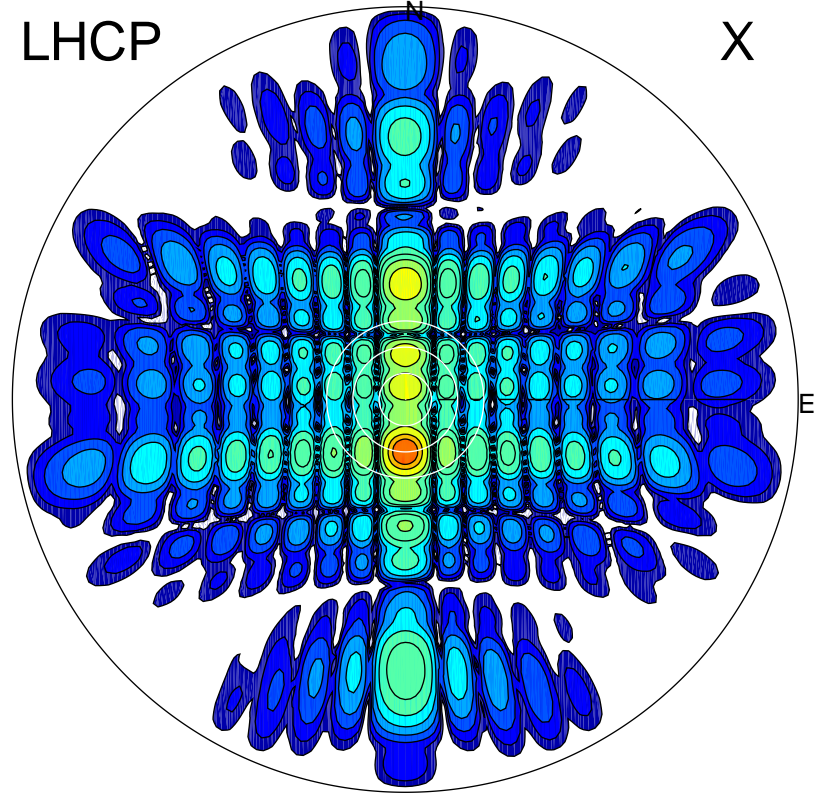


2013-10-25 15:46:45 A1 6.93500000 MHz 794.0 kW

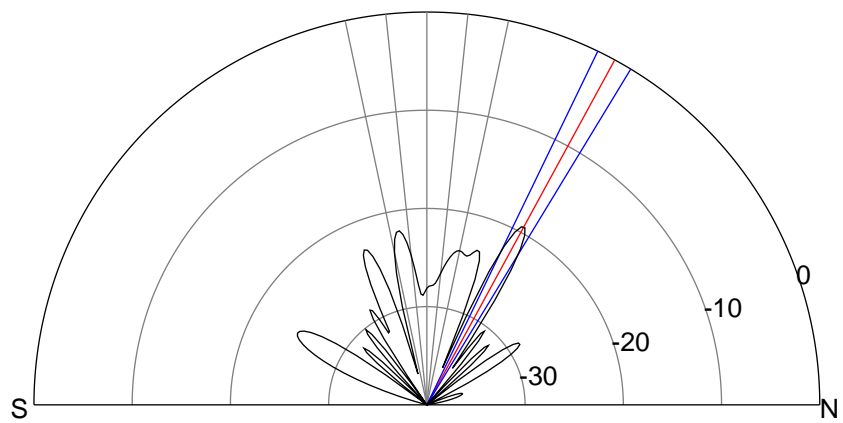
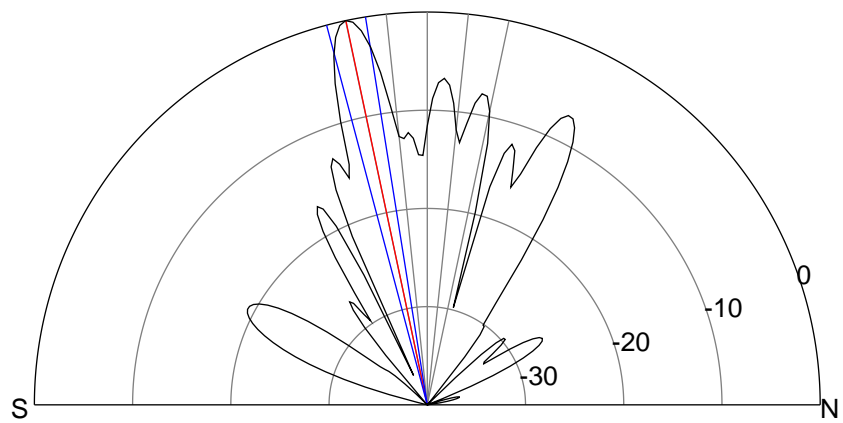
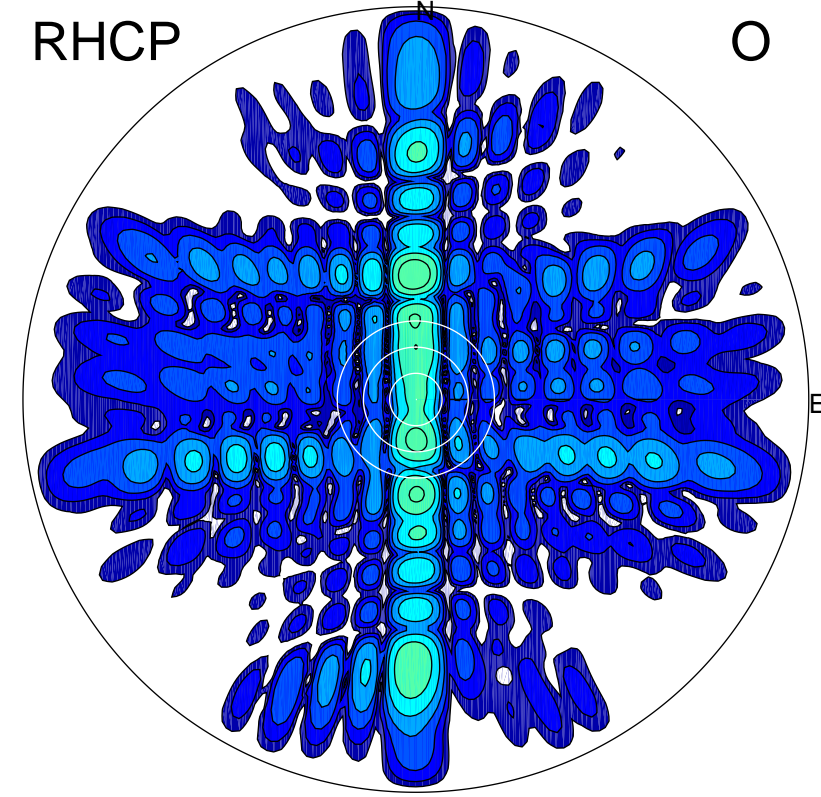
LHCP

X



RHCP

O



ERP 497.3 MW

Peak gain 28.0 dBi at Az 180 Zen 12
RHCP gain 3.8 dBi
N-S peak 28.0 dBi at Zen -12.0
N-S -3 dB beamwidth 5.8 deg.

ERP 5.8 MW

Peak gain 8.6 dBi at Az 359 Zen 29
LHCP gain 18.5 dBi
N-S peak 8.6 dBi at Zen 28.6
N-S -3 dB beamwidth 5.5 deg.