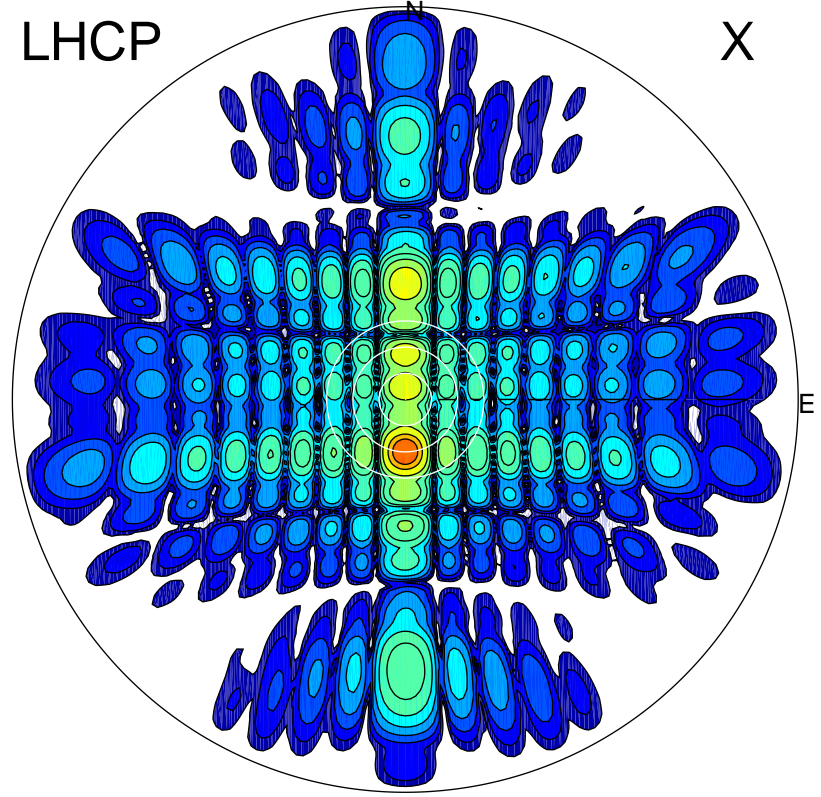


2013-10-25 15:46:05 A1 6.92500000 MHz 798.0 kW

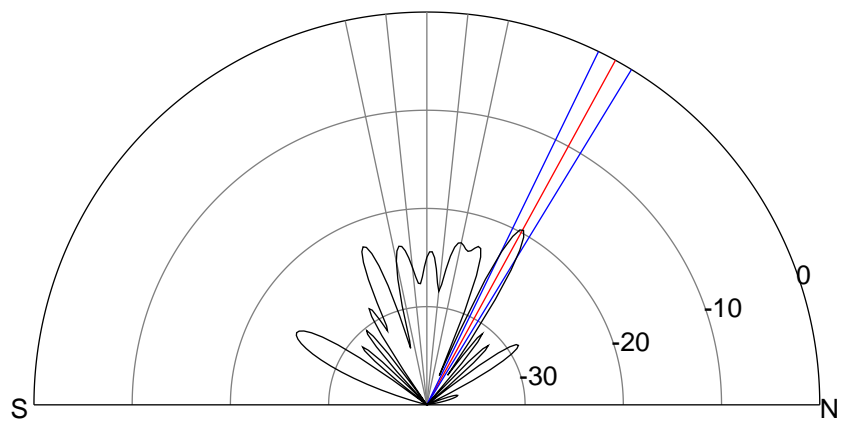
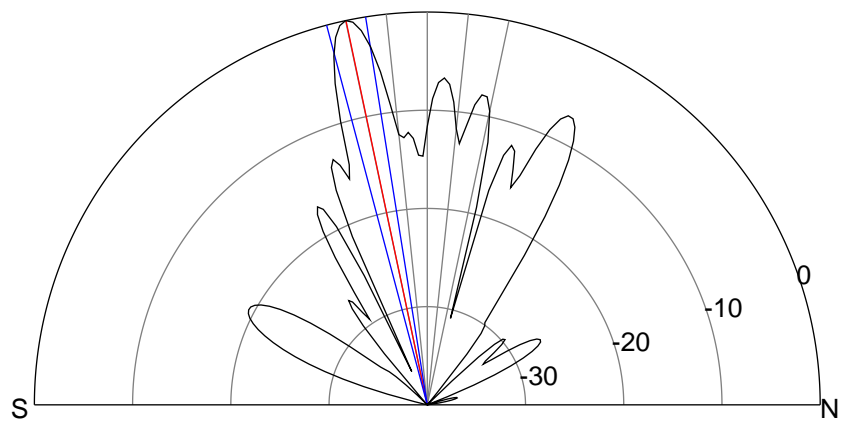
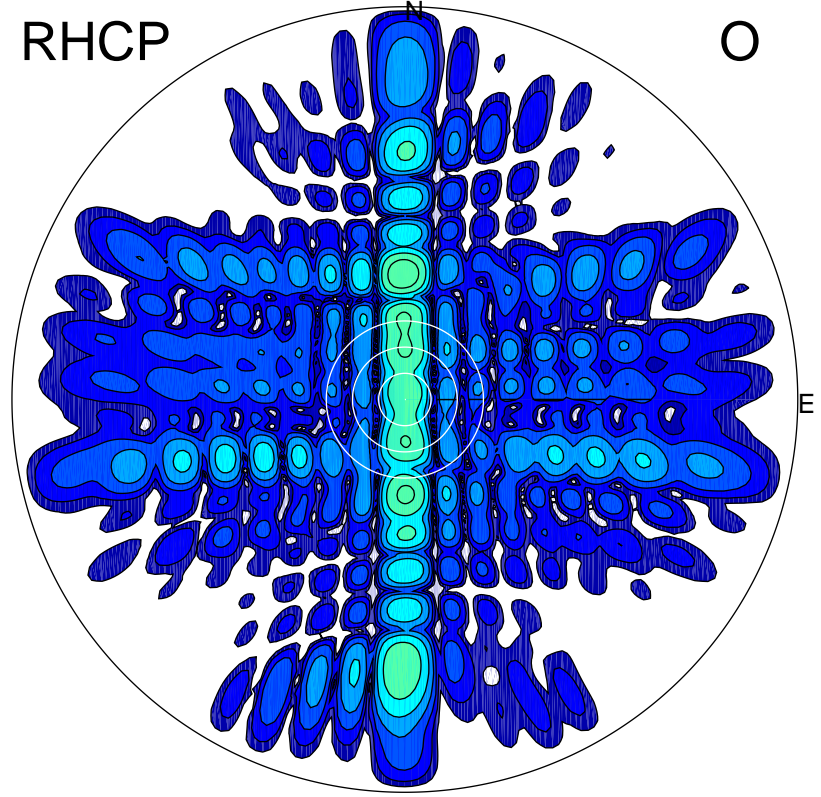
LHCP

X



RHCP

O



ERP 499.1 MW

Peak gain 28.0 dBi at Az 180 Zen 12
RHCP gain 2.9 dBi
N-S peak 28.0 dBi at Zen -11.9
N-S -3 dB beamwidth 5.8 deg.

ERP 5.4 MW

Peak gain 8.3 dBi at Az 359 Zen 29
LHCP gain 18.6 dBi
N-S peak 8.3 dBi at Zen 28.7
N-S -3 dB beamwidth 5.5 deg.