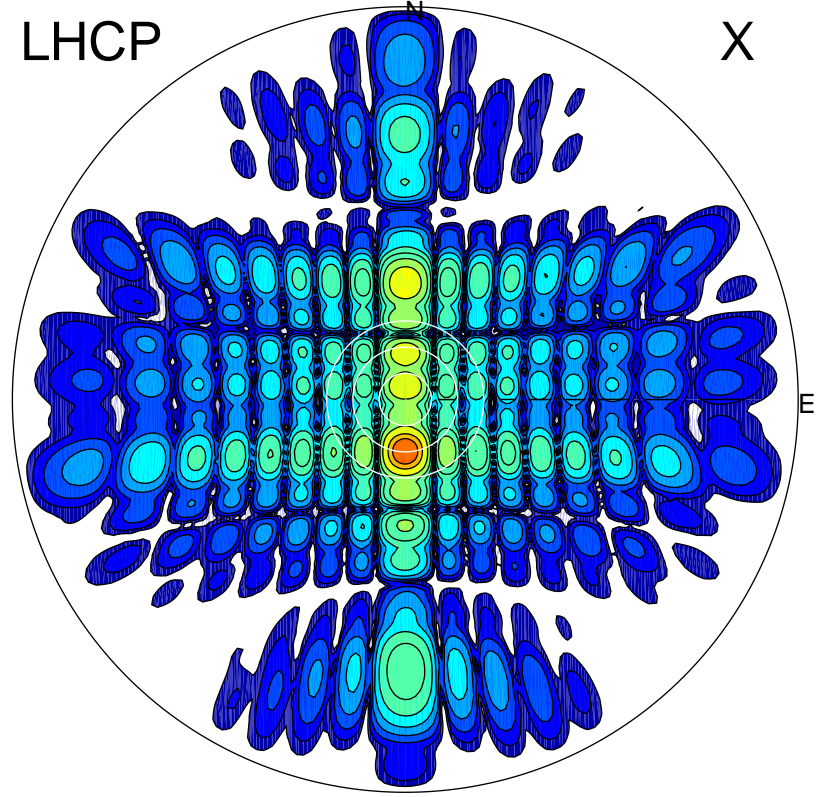


2013-10-25 15:45:25 A1 6.91500000 MHz 799.0 kW

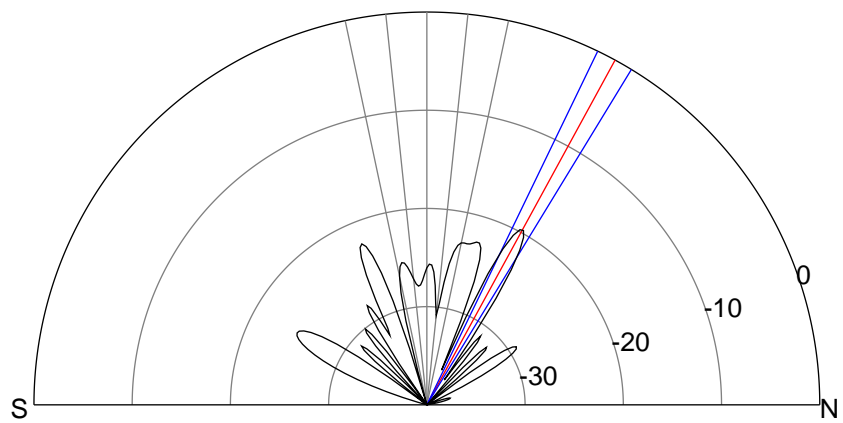
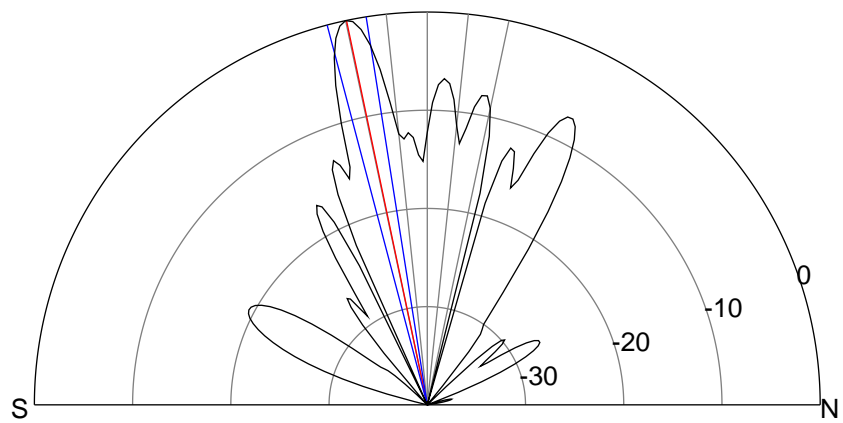
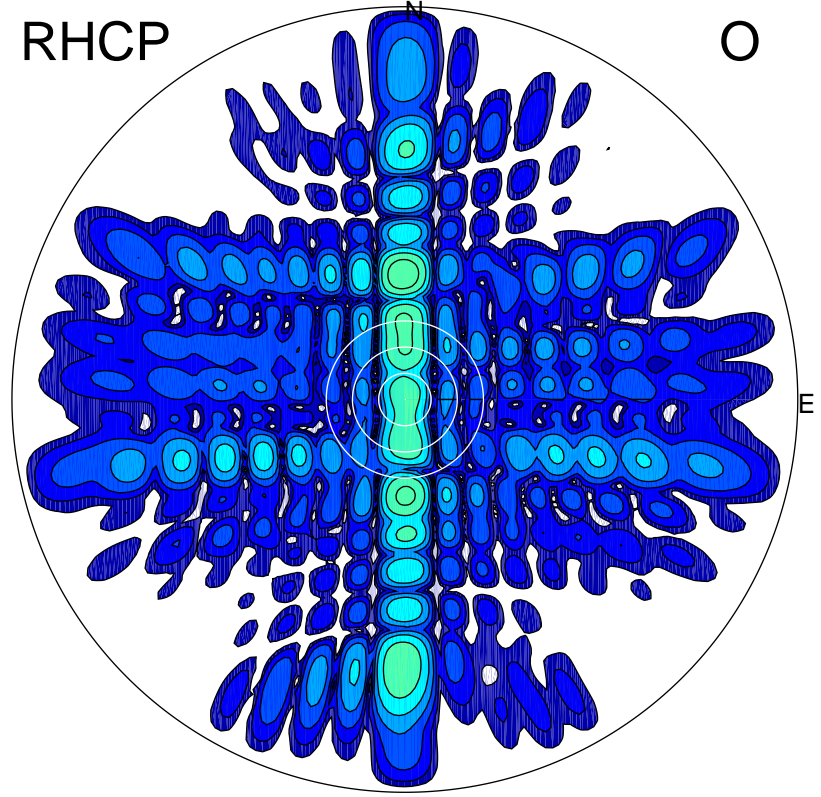
LHCP

X



RHCP

O



### ERP 501.3 MW

Peak gain 28.0 dBi at Az 180 Zen 12  
RHCP gain 1.4 dBi  
N-S peak 28.0 dBi at Zen -11.9  
N-S -3 dB beamwidth 5.8 deg.

### ERP 5.4 MW

Peak gain 8.3 dBi at Az 359 Zen 29  
LHCP gain 18.8 dBi  
N-S peak 8.3 dBi at Zen 28.6  
N-S -3 dB beamwidth 5.6 deg.