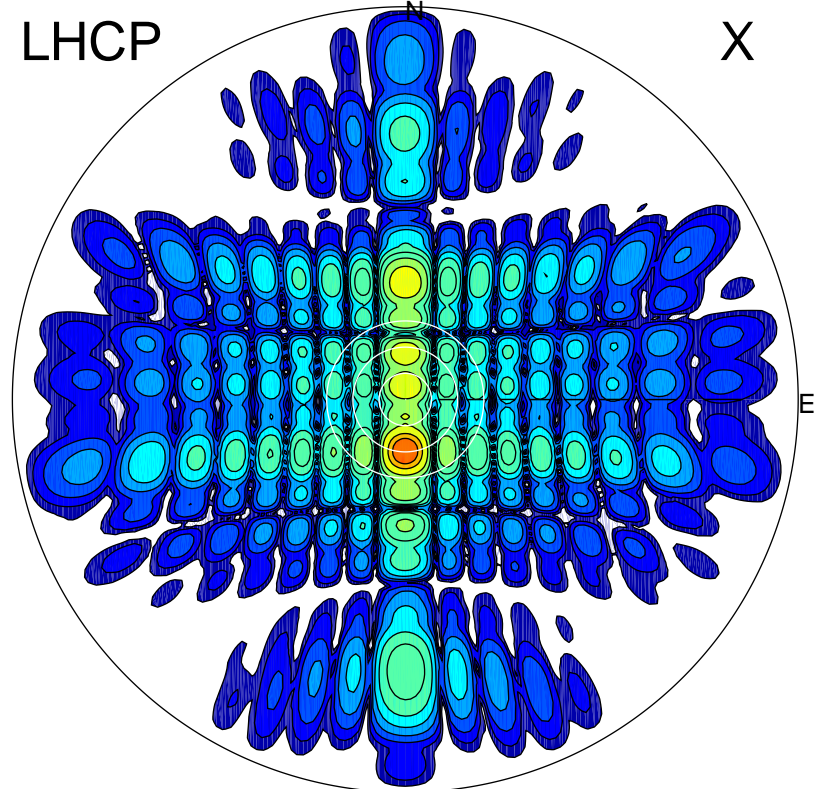


2013-10-25 15:44:45 A1 6.90500000 MHz 796.0 kW

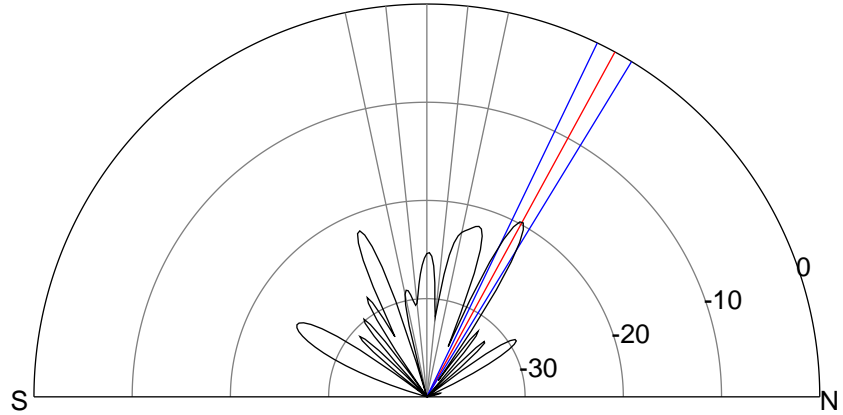
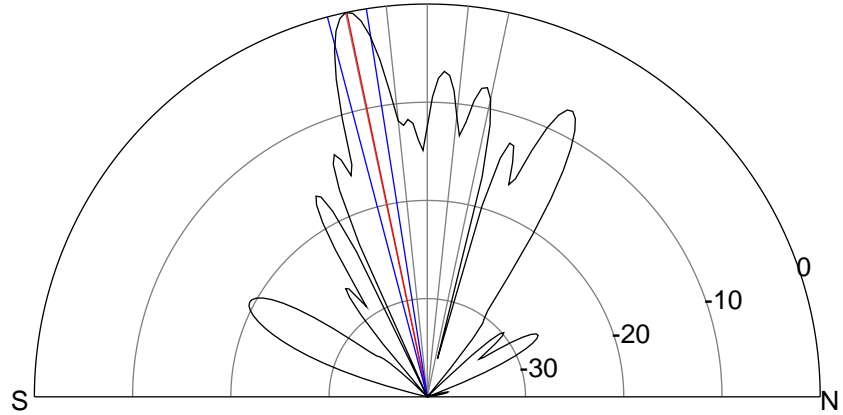
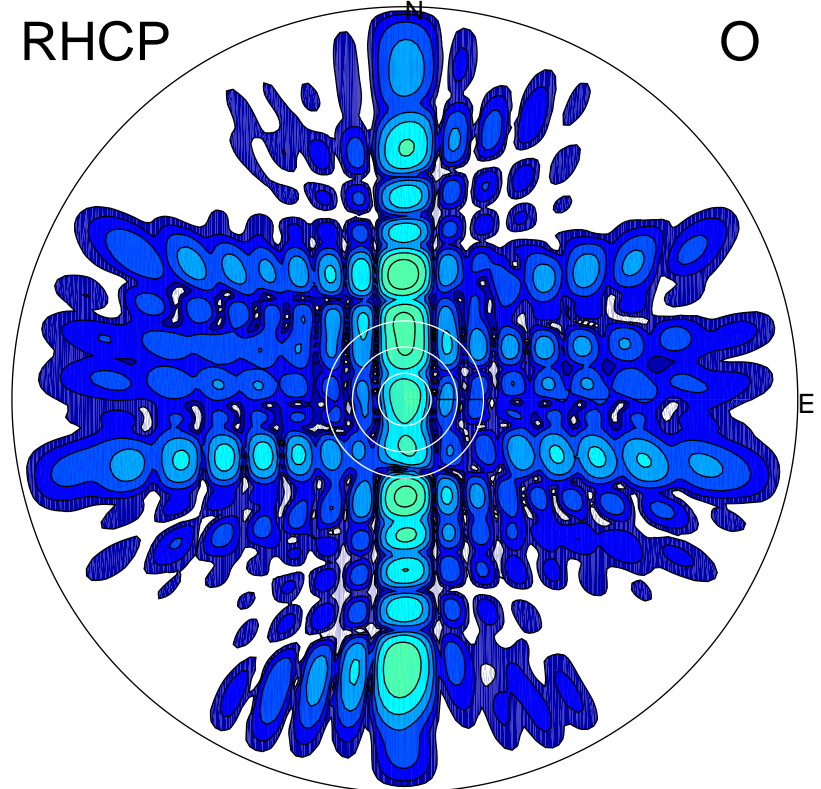
LHCP

X



RHCP

O



ERP 499.9 MW

Peak gain 28.0 dBi at Az 180 Zen 12
RHCP gain -1.4 dBi
N-S peak 28.0 dBi at Zen -11.8
N-S -3 dB beamwidth 5.8 deg.

ERP 5.4 MW

Peak gain 8.3 dBi at Az 359 Zen 29
LHCP gain 18.9 dBi
N-S peak 8.3 dBi at Zen 28.6
N-S -3 dB beamwidth 5.7 deg.