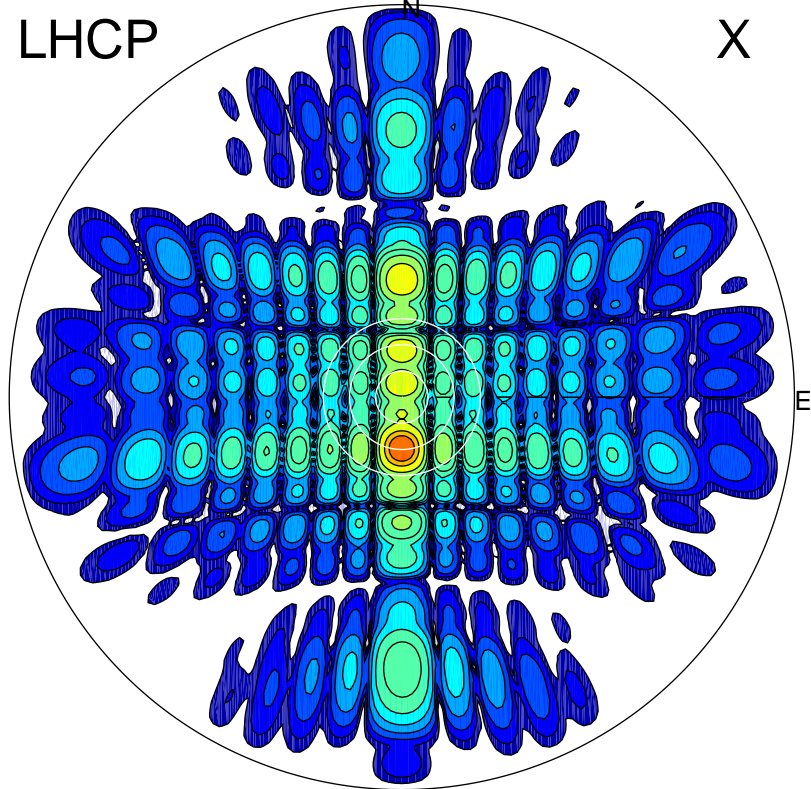


2013-10-25 15:44:05 A1 6.89500000 MHz 794.0 kW

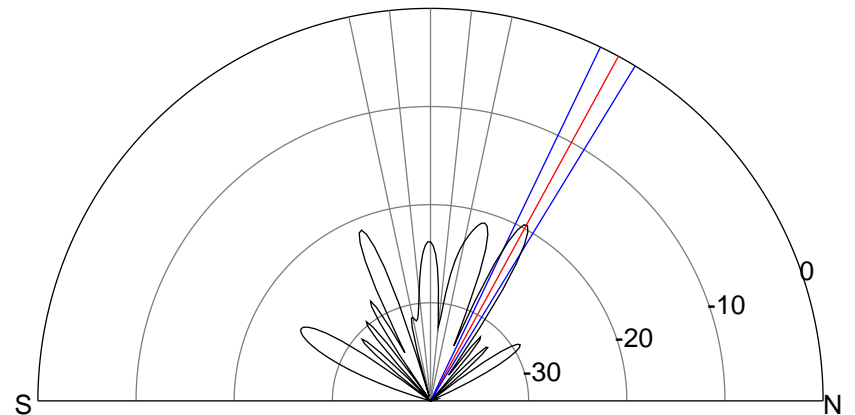
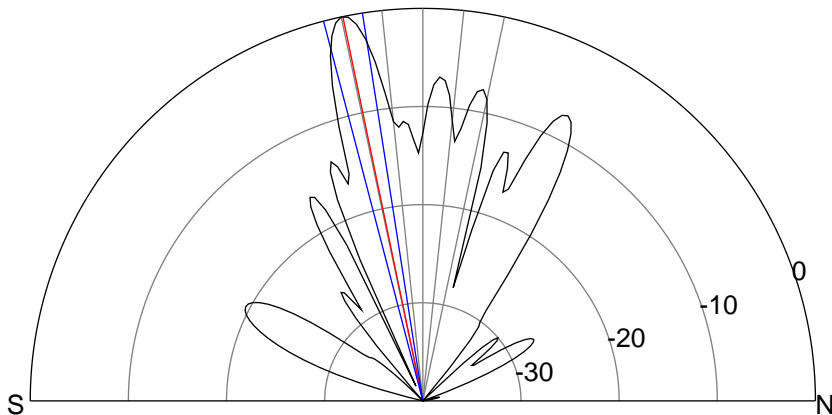
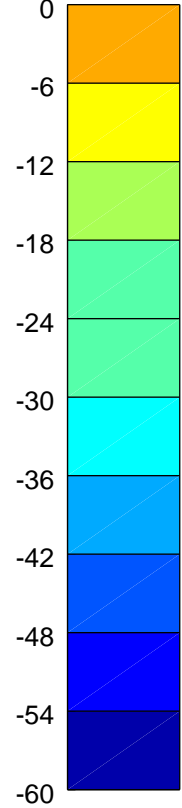
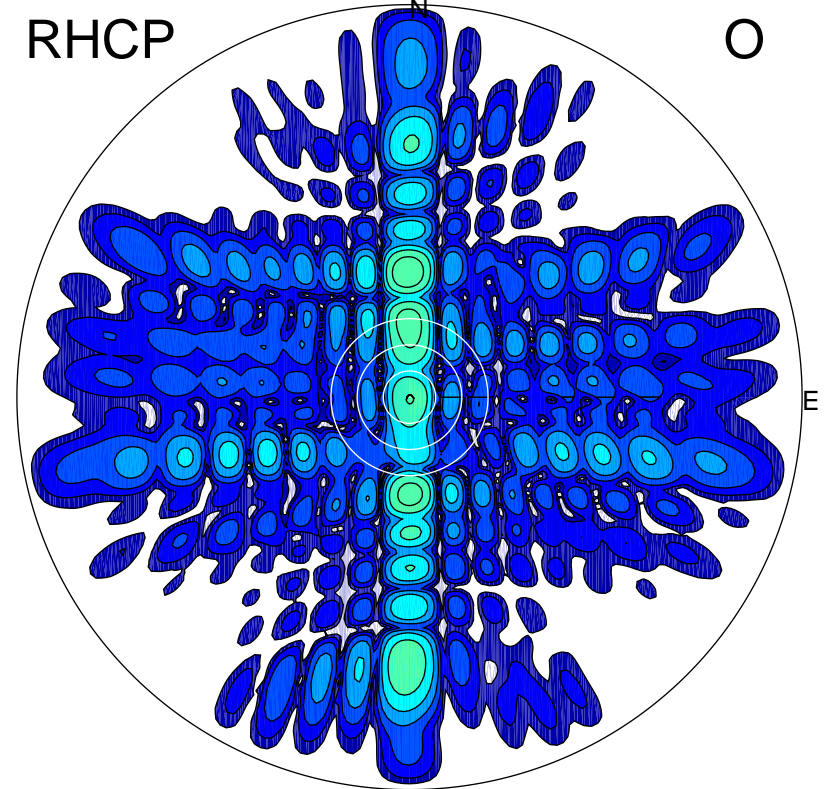
LHCP

X



RHCP

O



ERP 496.7 MW

Peak gain 28.0 dBi at Az 180 Zen 12
RHCP gain -3.3 dBi
N-S peak 28.0 dBi at Zen -11.8
N-S -3 dB beamwidth 5.8 deg.

ERP 5.5 MW

Peak gain 8.4 dBi at Az 359 Zen 29
LHCP gain 19.0 dBi
N-S peak 8.4 dBi at Zen 28.6
N-S -3 dB beamwidth 5.8 deg.