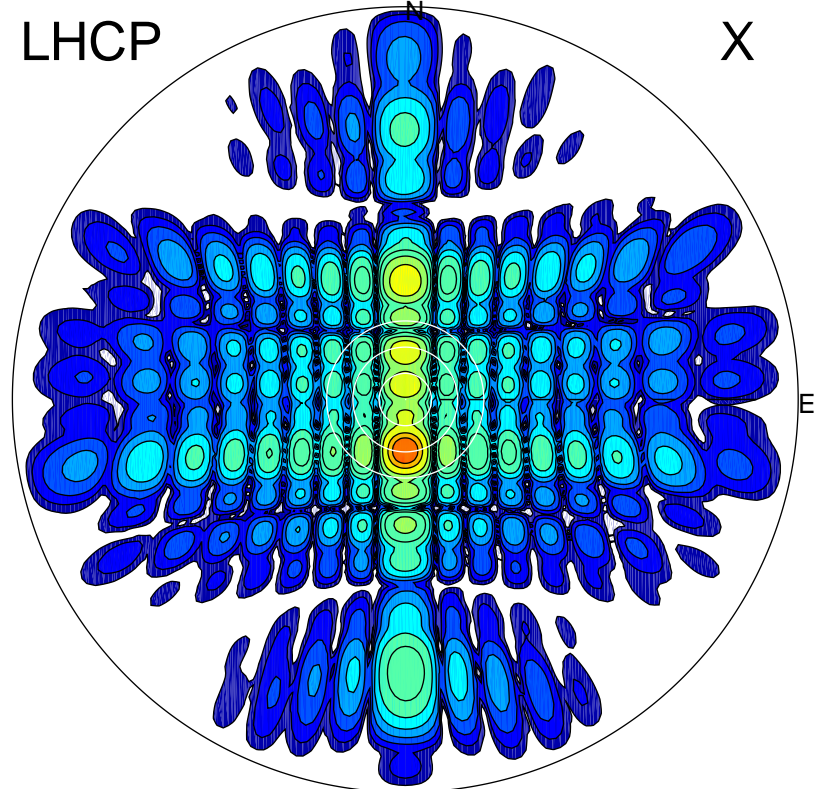


2013-10-25 15:42:05 A1 6.86500000 MHz 796.0 kW

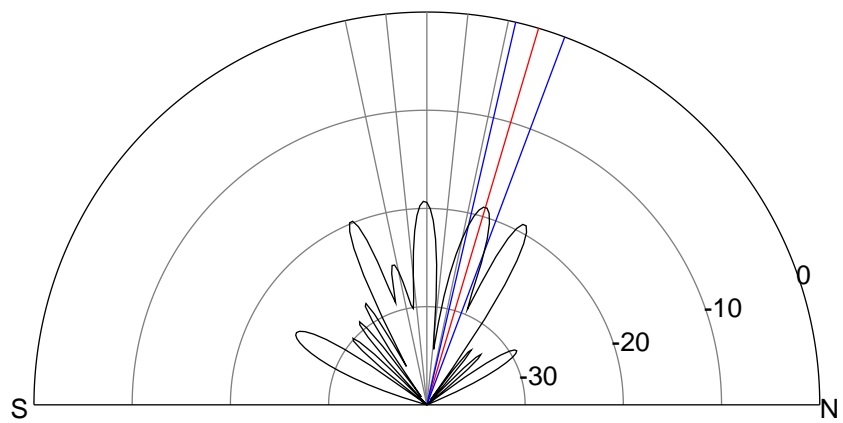
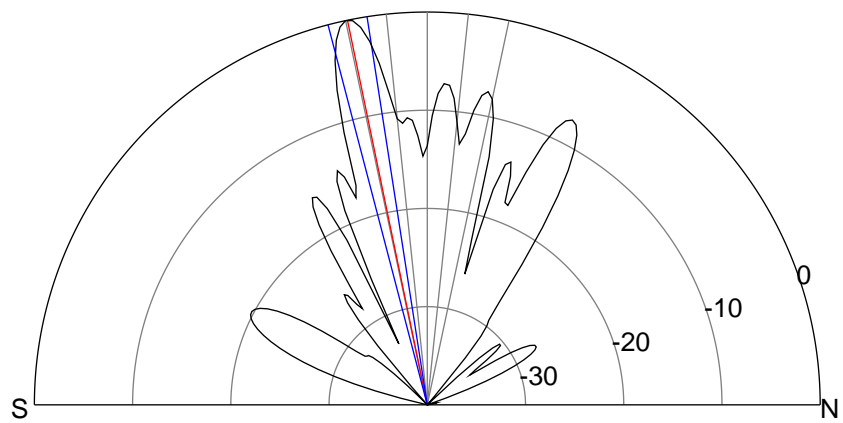
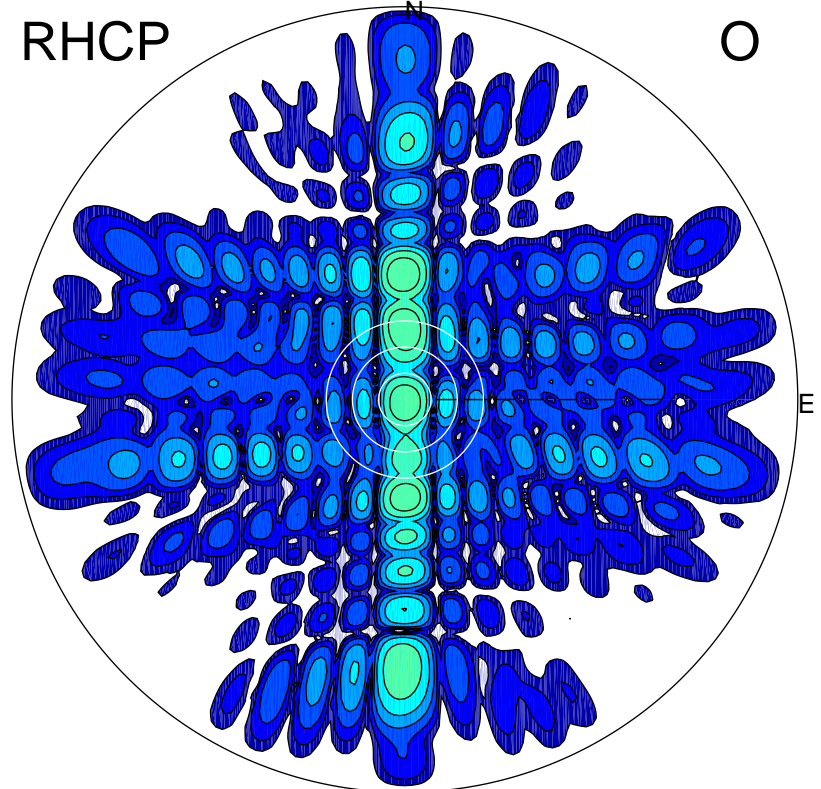
LHCP

X



RHCP

O



ERP 489.4 MW

Peak gain 27.9 dBi at Az 180 Zen 12
RHCP gain 1.8 dBi
N-S peak 27.9 dBi at Zen -11.7
N-S -3 dB beamwidth 5.8 deg.

ERP 6.1 MW

Peak gain 8.8 dBi at Az 0 Zen 17
LHCP gain 10.8 dBi
N-S peak 8.9 dBi at Zen 16.5
N-S -3 dB beamwidth 7.5 deg.