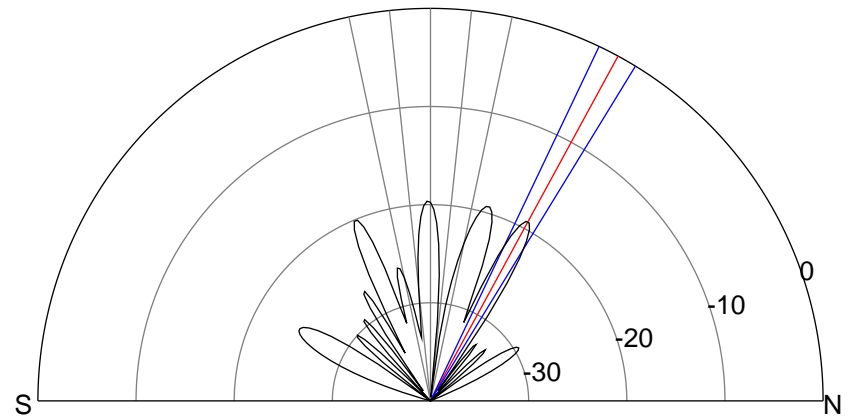
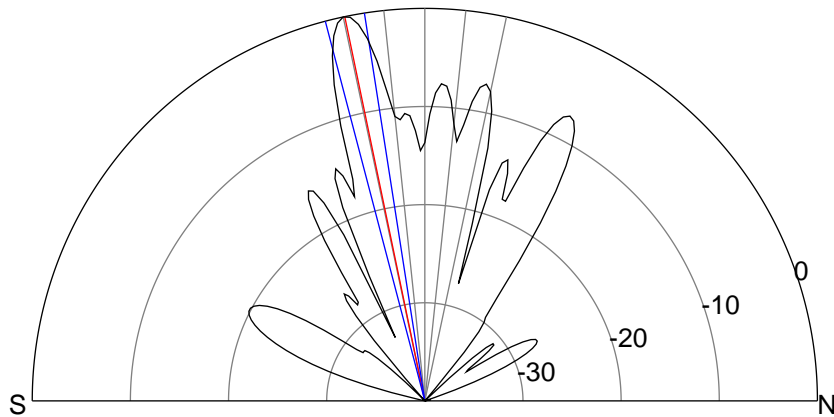
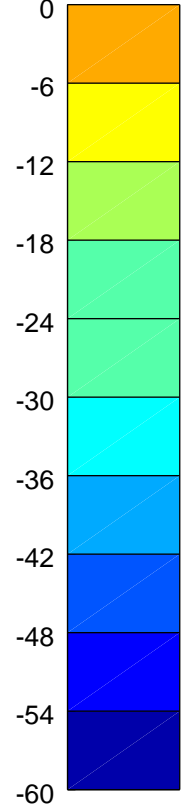
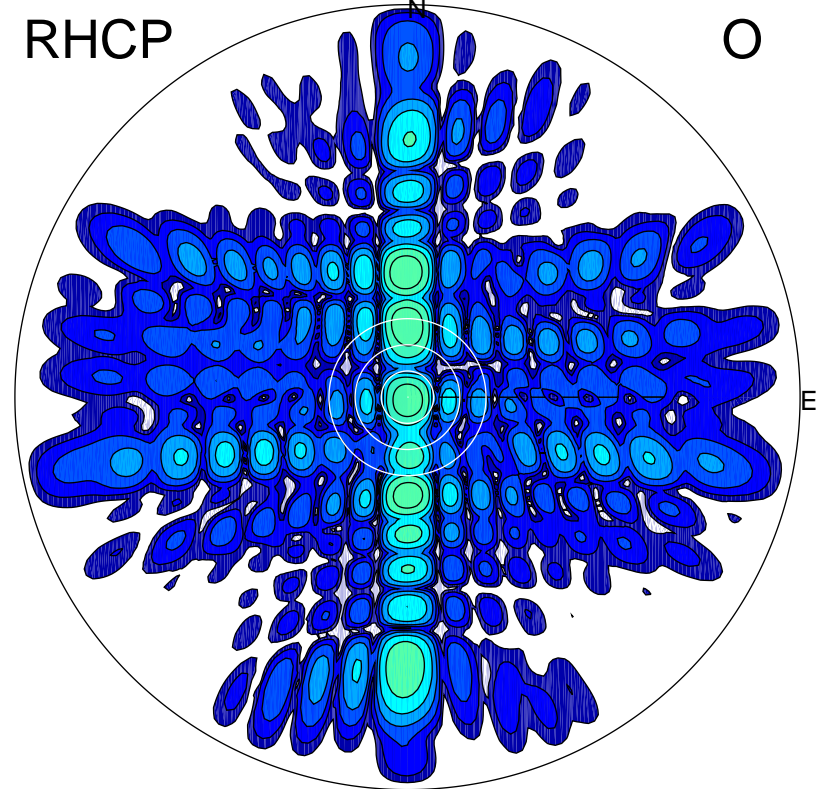
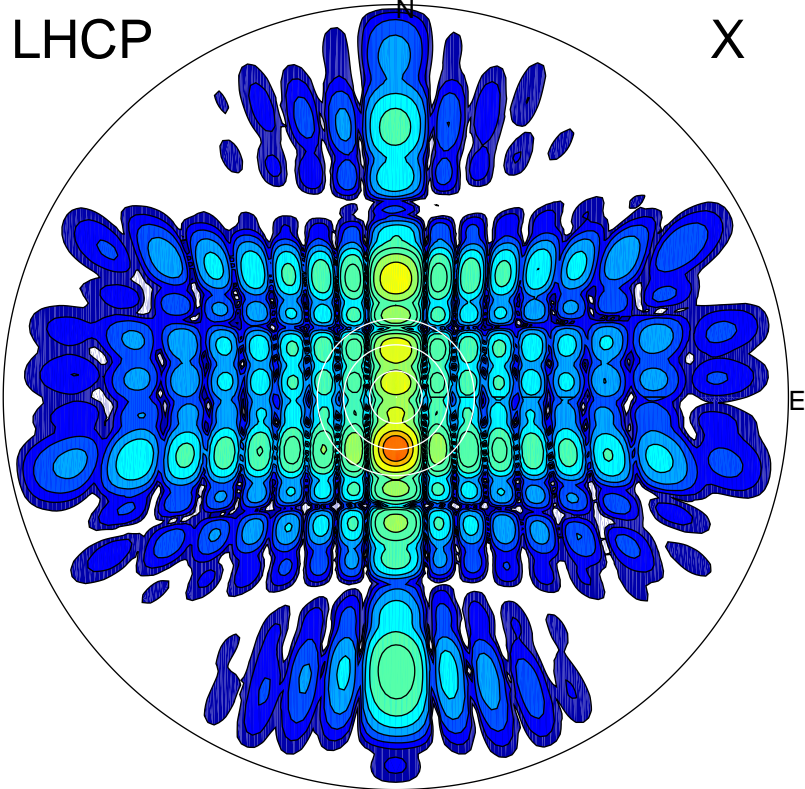


2013-10-25 15:41:25 A1 6.85500000 MHz 789.0 kW



ERP 485.2 MW

Peak gain 27.9 dBi at Az 180 Zen 12
RHCP gain 0.7 dBi
N-S peak 27.9 dBi at Zen -11.8
N-S -3 dB beamwidth 5.8 deg.

ERP 5.8 MW

Peak gain 8.7 dBi at Az 359 Zen 29
LHCP gain 19.3 dBi
N-S peak 8.7 dBi at Zen 28.5
N-S -3 dB beamwidth 6.0 deg.