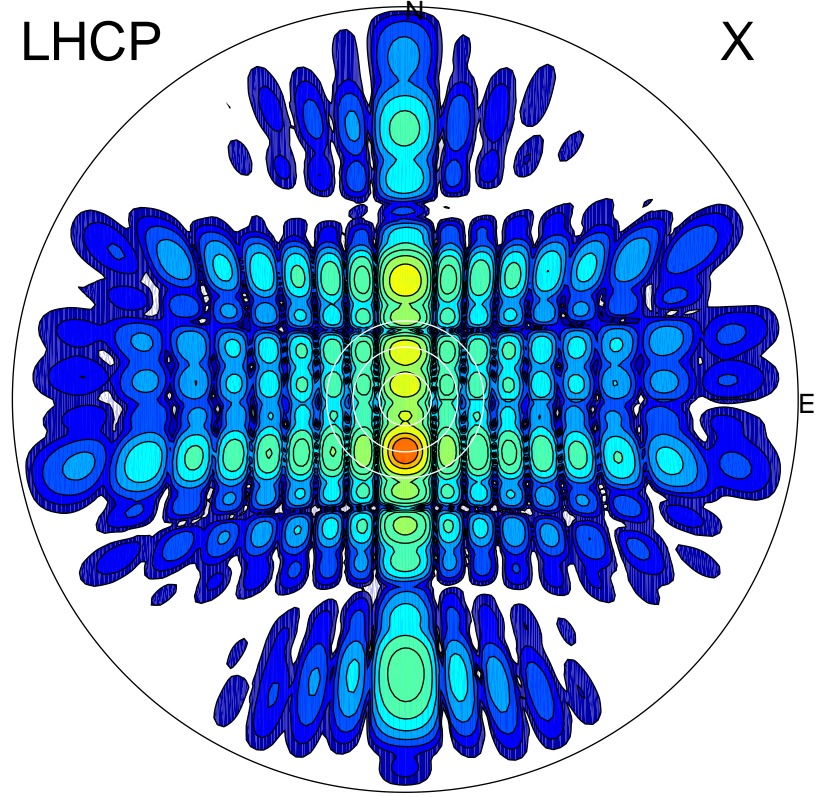


2013-10-25 15:40:45 A1 6.84500000 MHz 795.0 kW

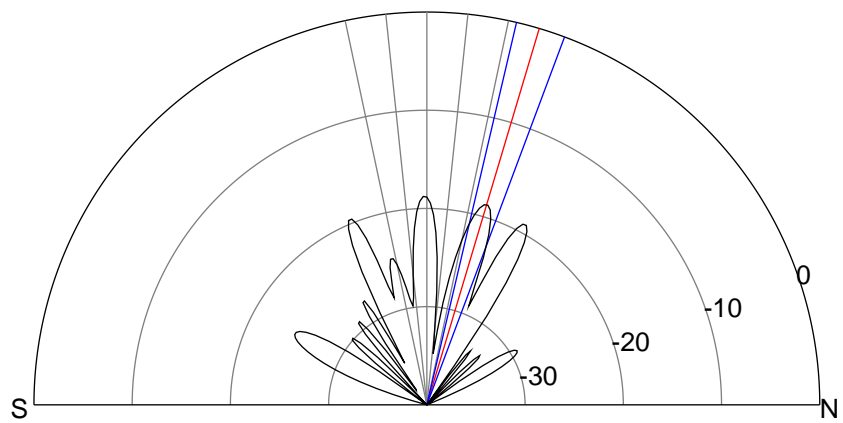
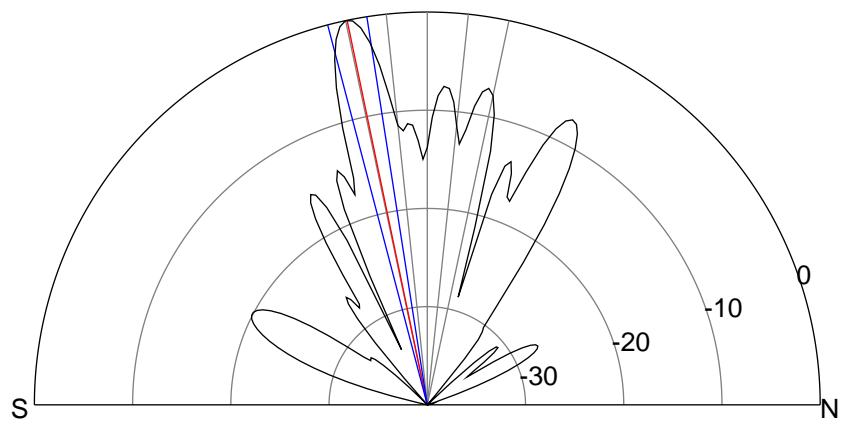
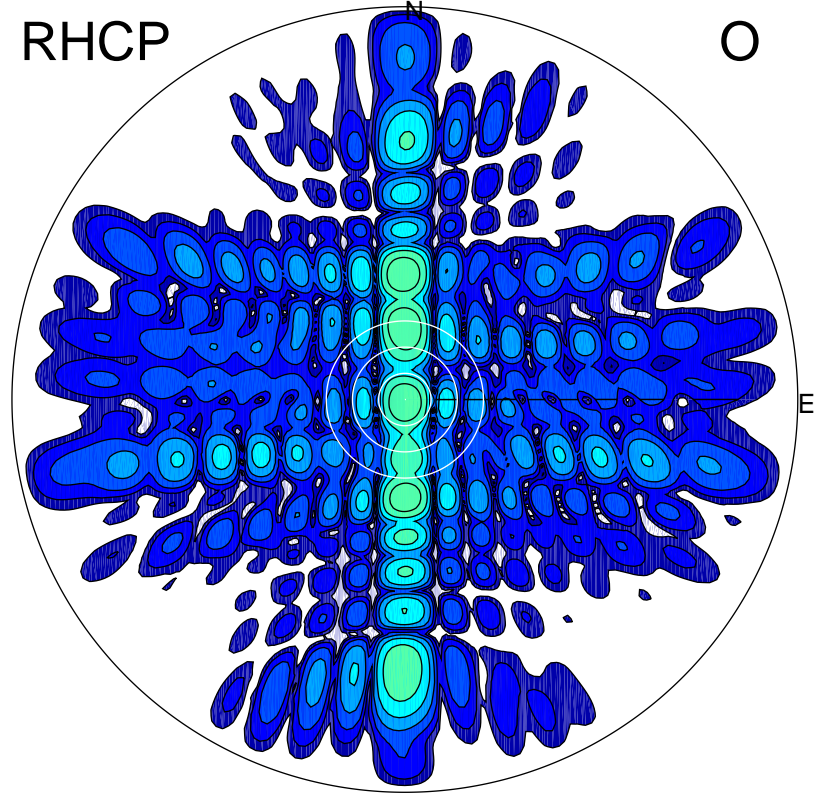
LHCP

X



RHCP

O



ERP 486.2 MW

Peak gain 27.9 dBi at Az 180 Zen 12
RHCP gain 2.5 dBi
N-S peak 27.9 dBi at Zen -11.8
N-S -3 dB beamwidth 5.8 deg.

ERP 6.5 MW

Peak gain 9.1 dBi at Az 359 Zen 17
LHCP gain 10.3 dBi
N-S peak 9.1 dBi at Zen 16.6
N-S -3 dB beamwidth 7.3 deg.