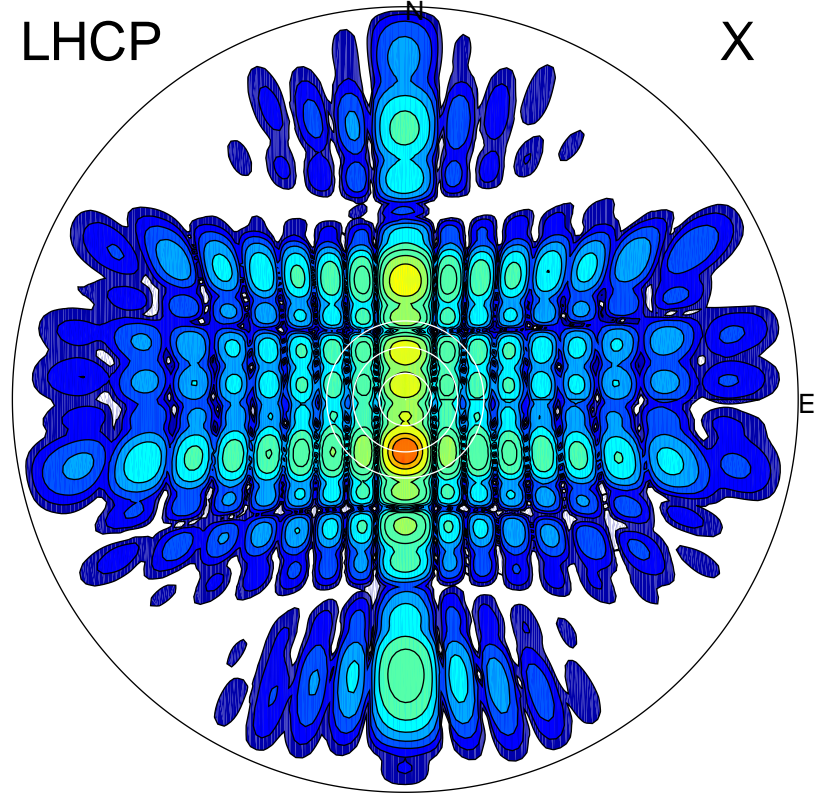


2013-10-25 15:40:05 A1 6.83500000 MHz 796.0 kW

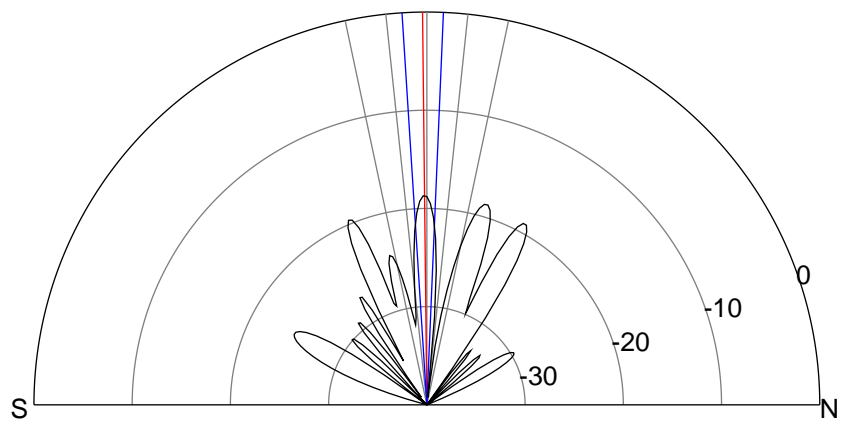
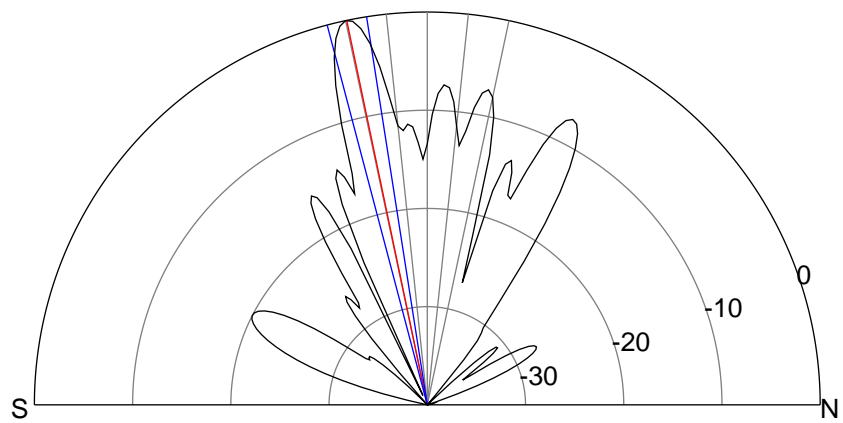
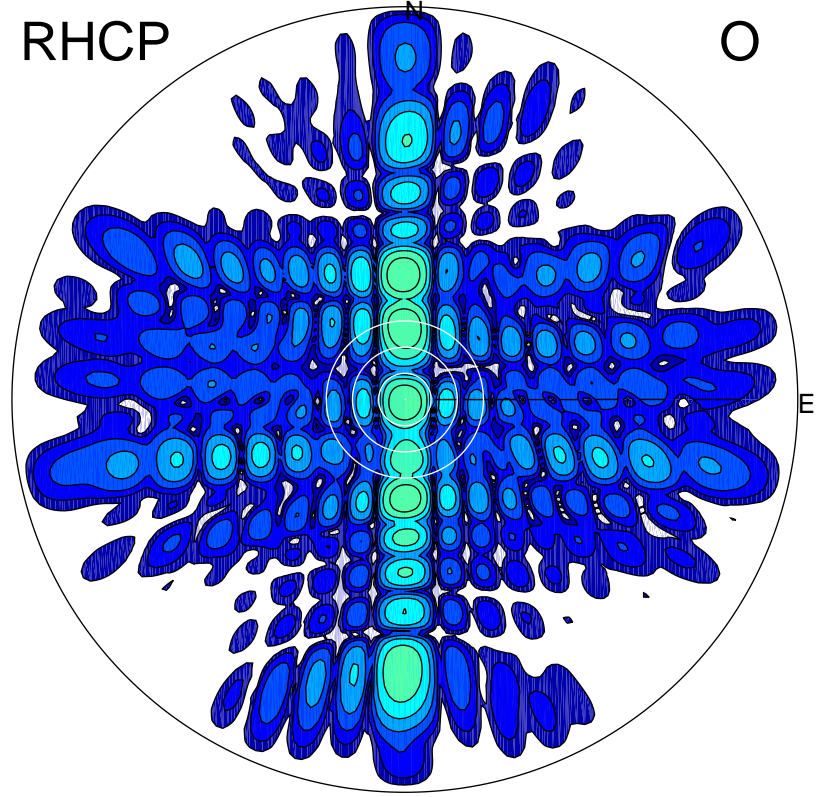
LHCP

X



RHCP

O



ERP 485.7 MW

Peak gain 27.9 dBi at Az 180 Zen 12
RHCP gain 2.4 dBi
N-S peak 27.9 dBi at Zen -11.8
N-S -3 dB beamwidth 5.9 deg.

ERP 6.5 MW

Peak gain 9.1 dBi at Az 175 Zen 1
LHCP gain 12.9 dBi
N-S peak 9.2 dBi at Zen -0.6
N-S -3 dB beamwidth 6.0 deg.