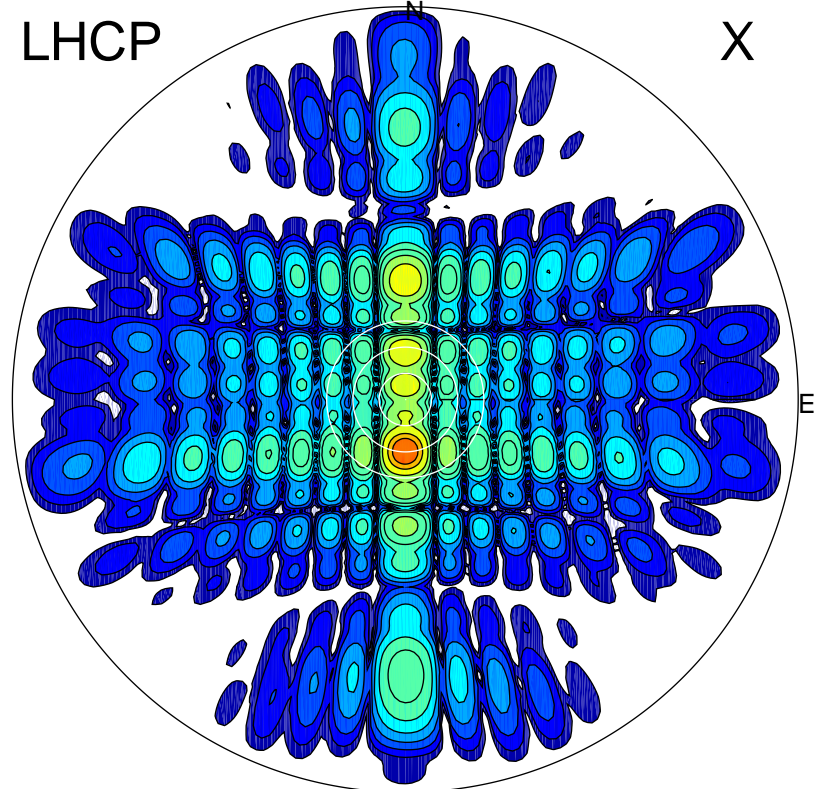


2013-10-25 15:39:25 A1 6.82500000 MHz 790.0 kW

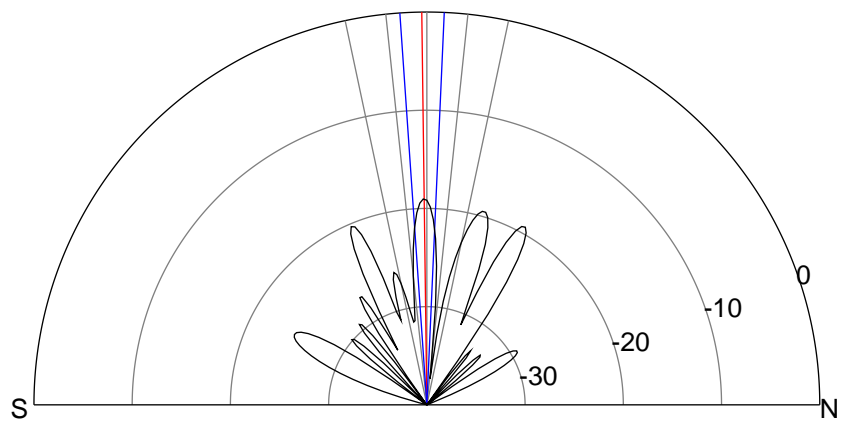
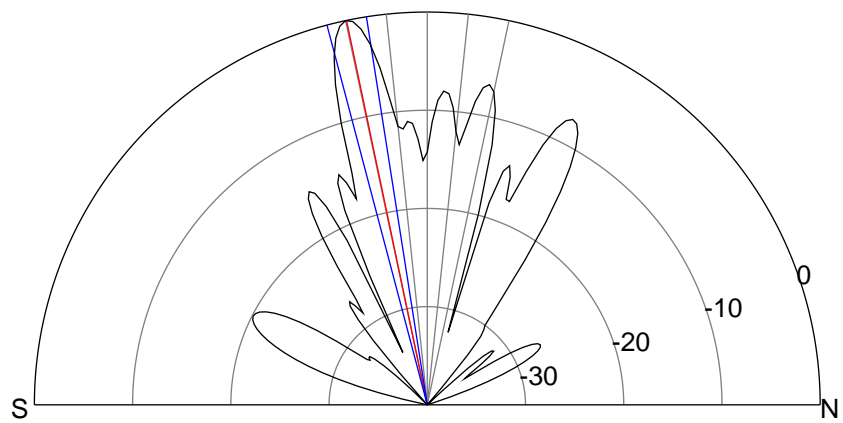
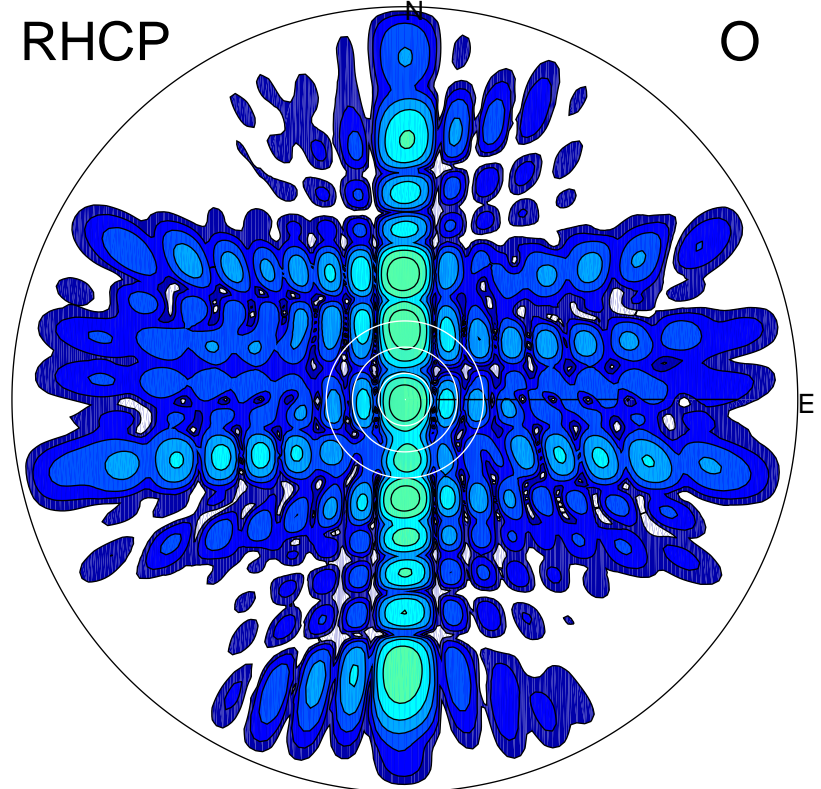
LHCP

X



RHCP

O



ERP 482.5 MW

Peak gain 27.9 dBi at Az 180 Zen 12
RHCP gain 0.5 dBi
N-S peak 27.9 dBi at Zen -11.9
N-S -3 dB beamwidth 5.9 deg.

ERP 6.0 MW

Peak gain 8.8 dBi at Az 172 Zen 1
LHCP gain 12.7 dBi
N-S peak 8.8 dBi at Zen -0.7
N-S -3 dB beamwidth 6.5 deg.