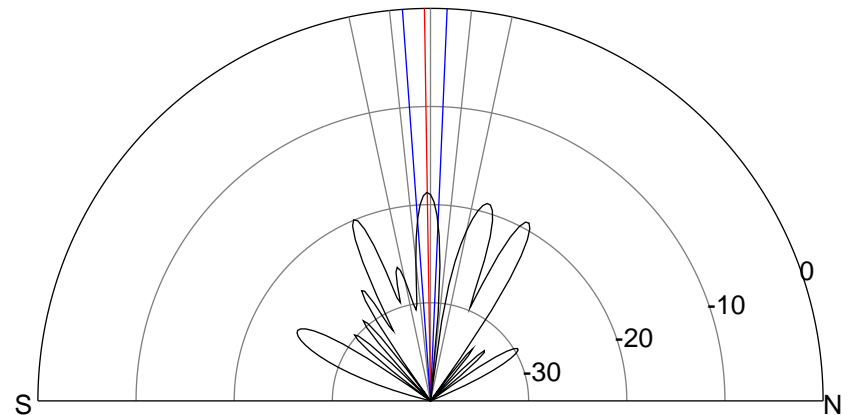
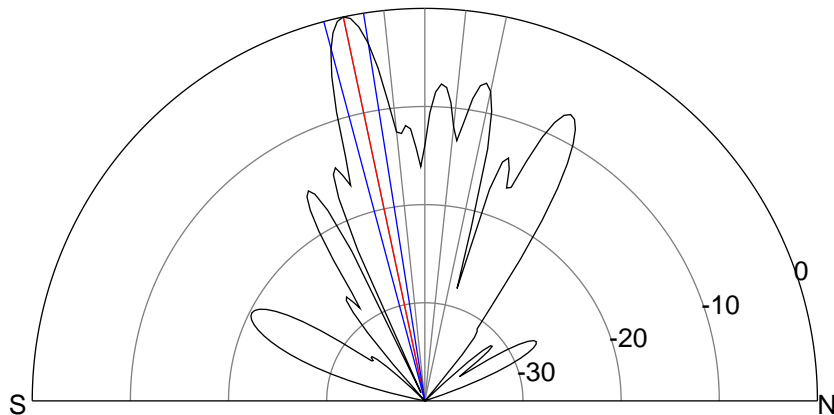
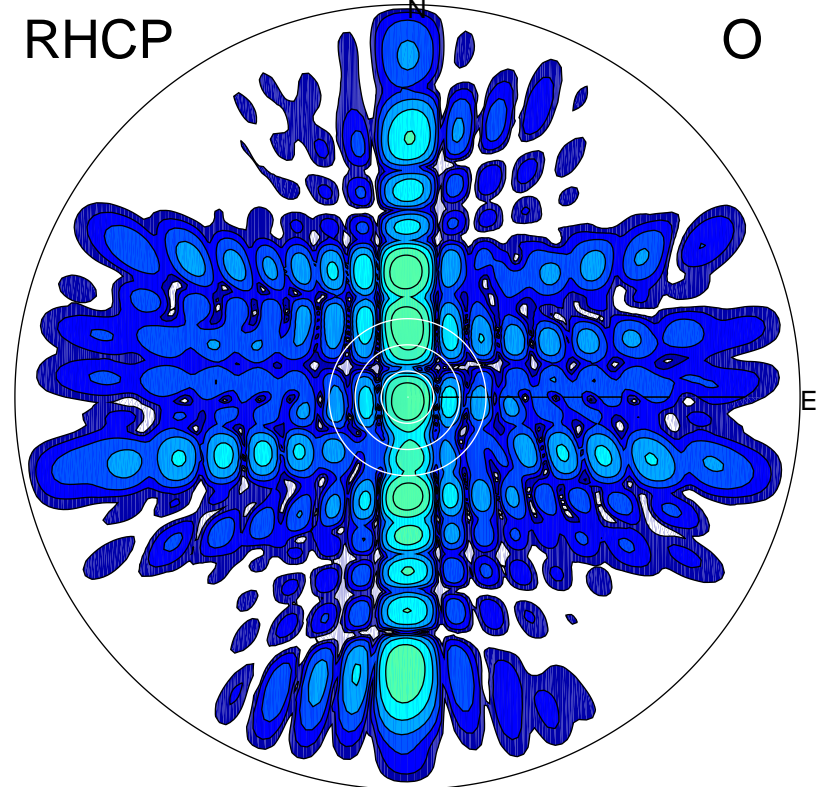
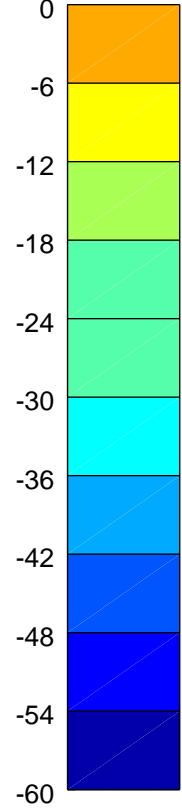
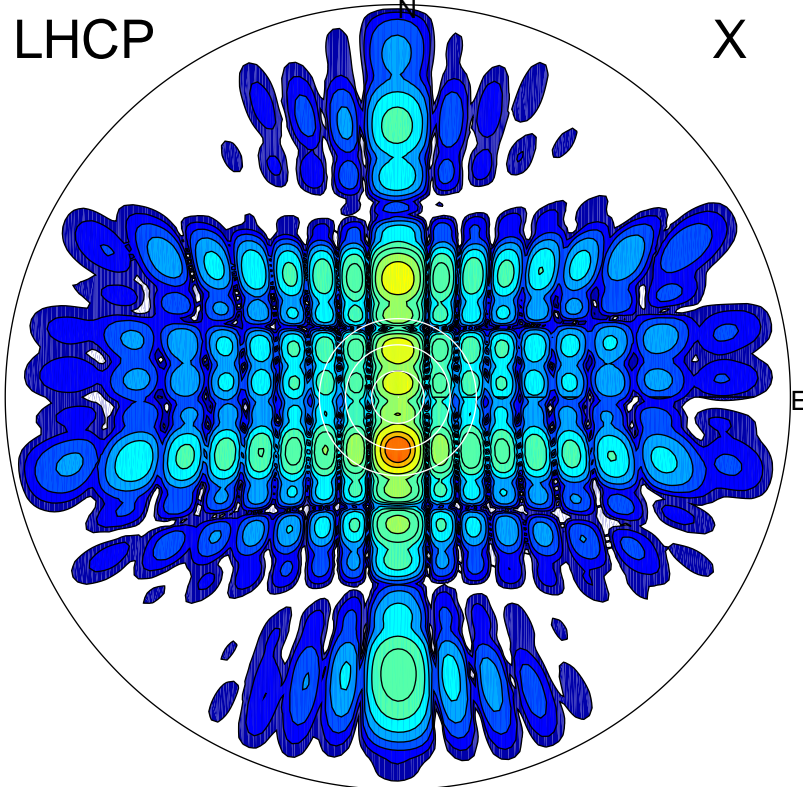


2013-10-25 15:38:45 A1 6.81500000 MHz 792.0 kW



ERP 481.5 MW

Peak gain 27.8 dBi at Az 180 Zen 12
RHCP gain 0.4 dBi
N-S peak 27.8 dBi at Zen -12.0
N-S -3 dB beamwidth 5.9 deg.

ERP 6.4 MW

Peak gain 9.1 dBi at Az 173 Zen 1
LHCP gain 11.7 dBi
N-S peak 9.1 dBi at Zen -0.9
N-S -3 dB beamwidth 6.5 deg.