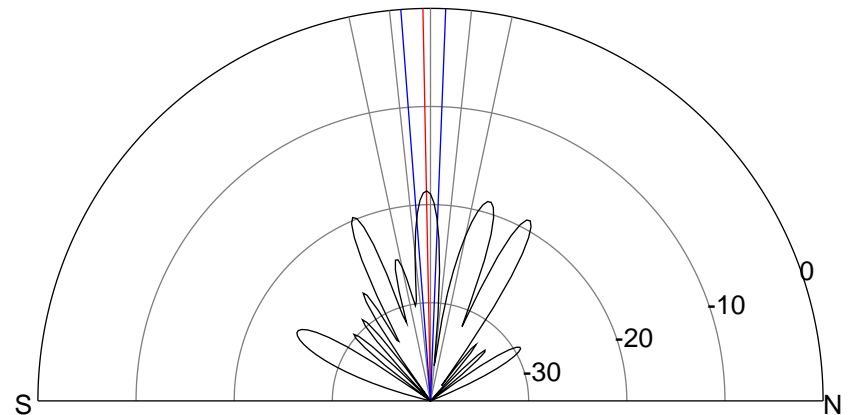
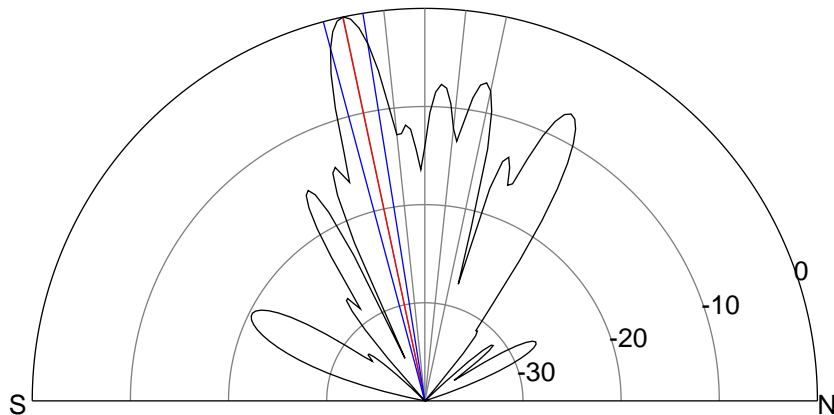
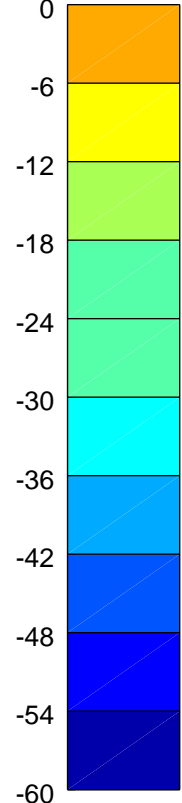
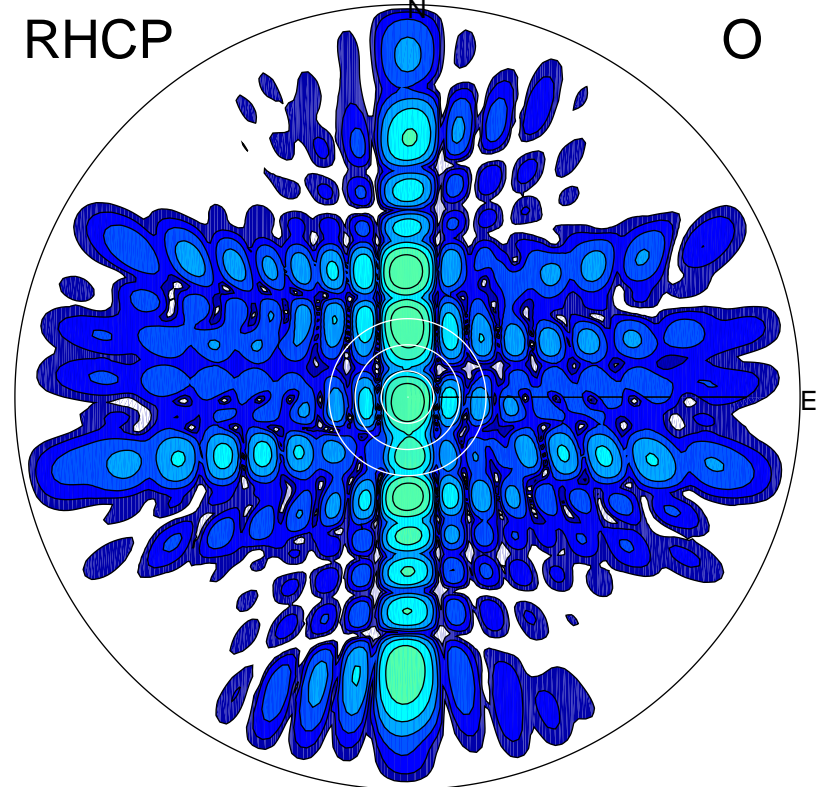
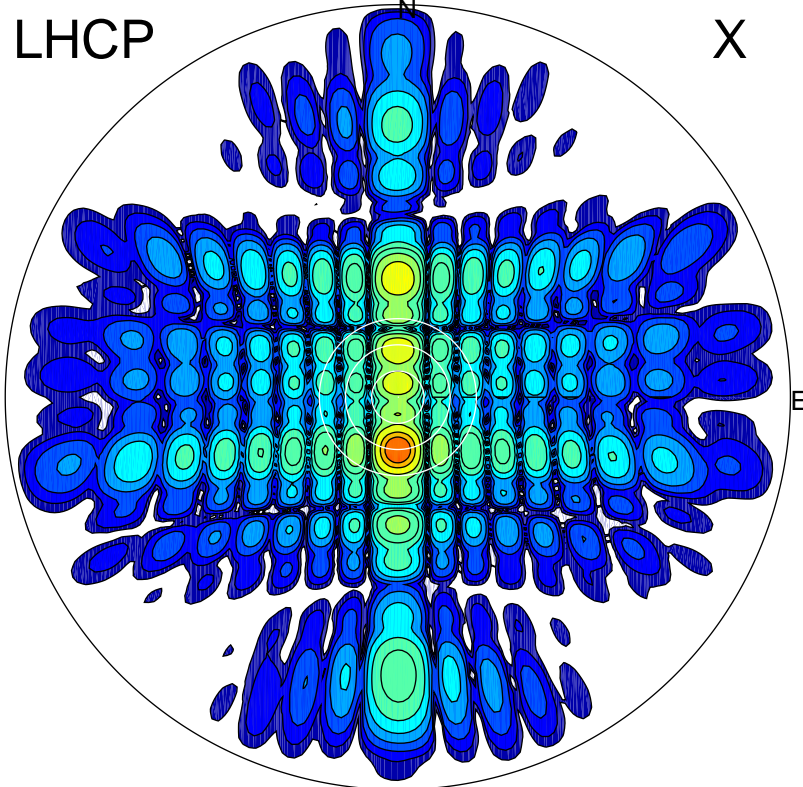


2013-10-25 15:38:05 A1 6.80500000 MHz 789.0 kW



ERP 477.2 MW

Peak gain 27.8 dBi at Az 180 Zen 12
RHCP gain 1.8 dBi
N-S peak 27.8 dBi at Zen -12.1
N-S -3 dB beamwidth 5.9 deg.

ERP 6.6 MW

Peak gain 9.2 dBi at Az 172 Zen 1
LHCP gain 11.4 dBi
N-S peak 9.2 dBi at Zen -1.1
N-S -3 dB beamwidth 6.6 deg.