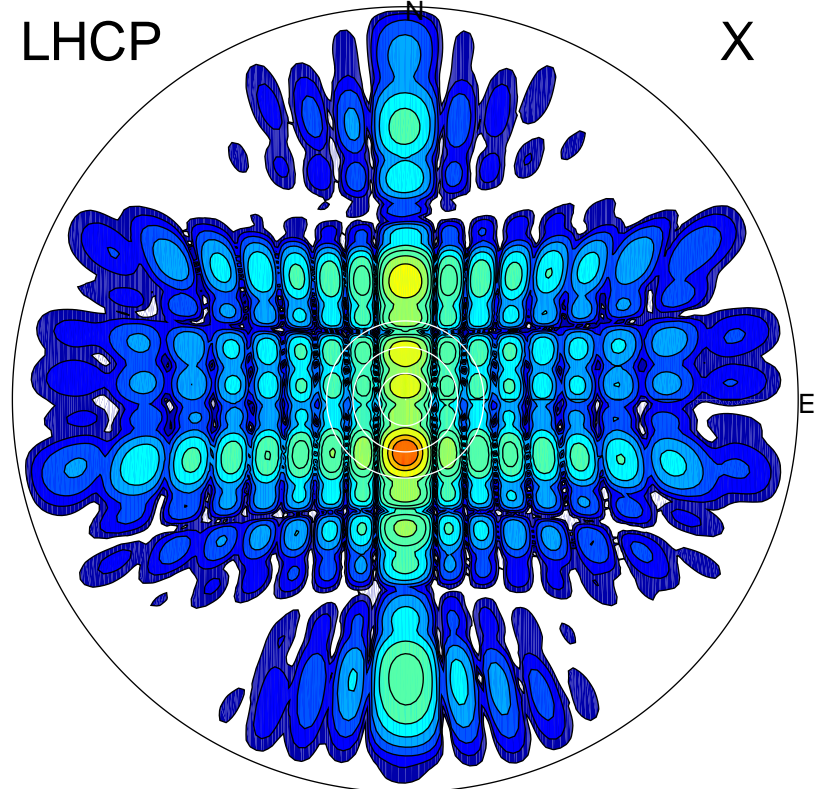


2013-10-25 15:37:25 A1 6.79500000 MHz 783.0 kW

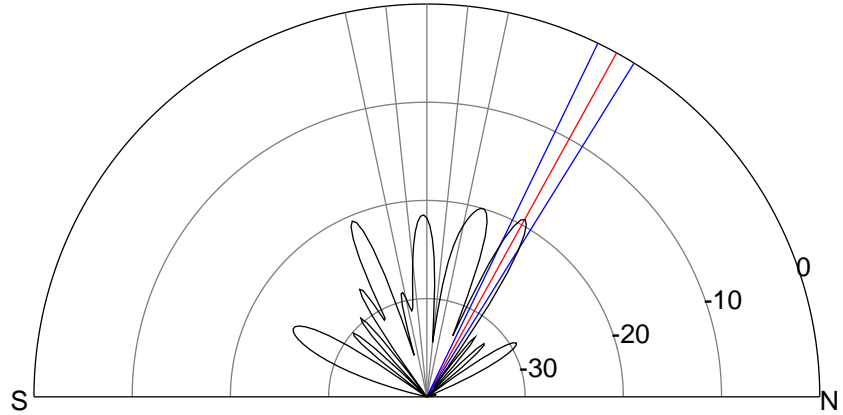
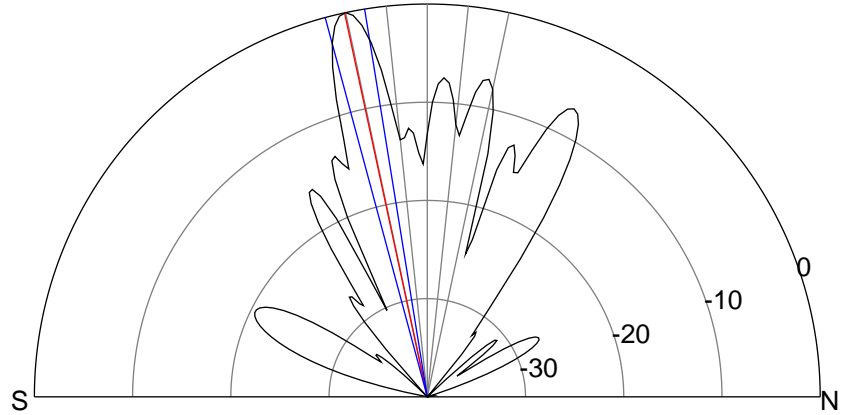
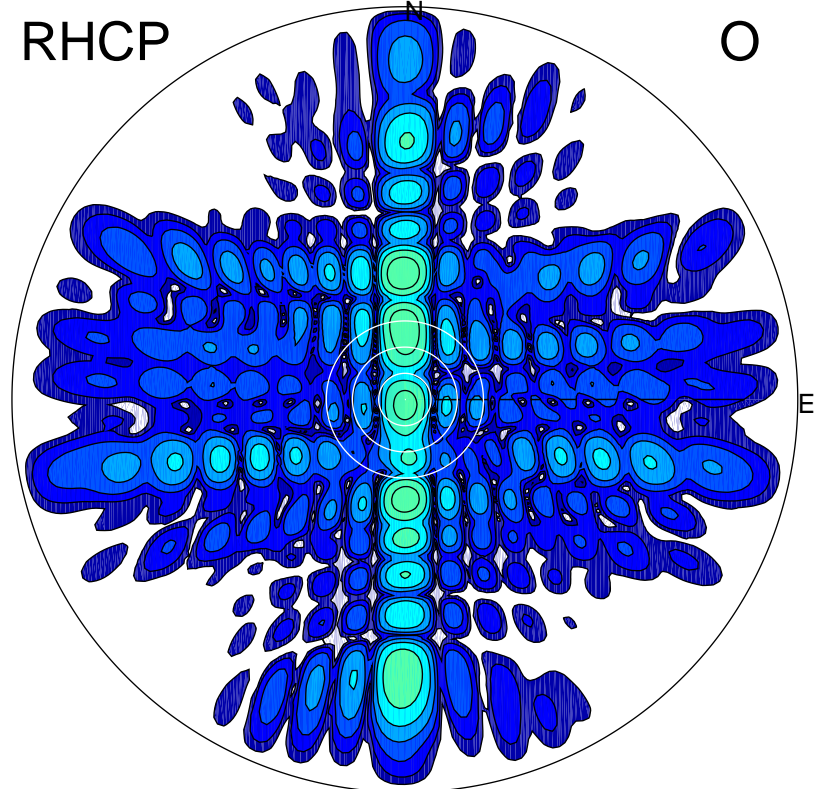
LHCP

X



RHCP

O



ERP 472.0 MW

Peak gain 27.8 dBi at Az 180 Zen 12
RHCP gain -1.9 dBi
N-S peak 27.8 dBi at Zen -12.2
N-S -3 dB beamwidth 5.9 deg.

ERP 5.5 MW

Peak gain 8.5 dBi at Az 359 Zen 29
LHCP gain 19.5 dBi
N-S peak 8.4 dBi at Zen 28.9
N-S -3 dB beamwidth 6.0 deg.