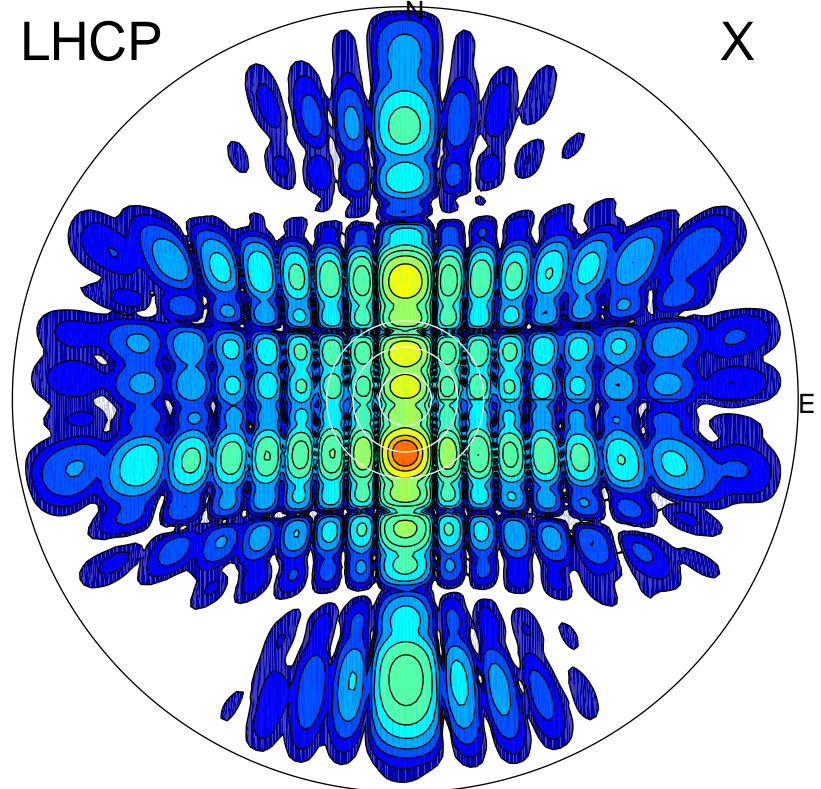


2013-10-25 15:36:45 A1 6.78500000 MHz 787.0 kW

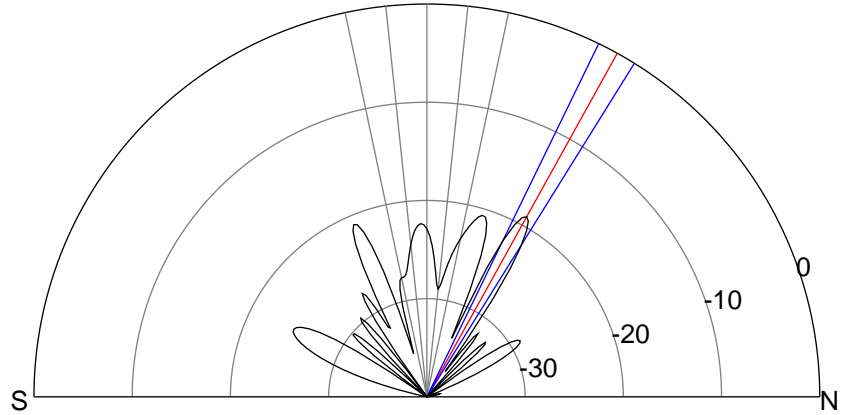
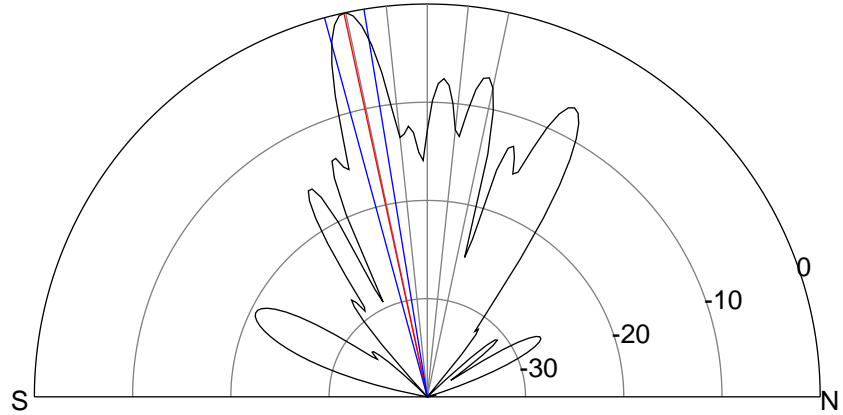
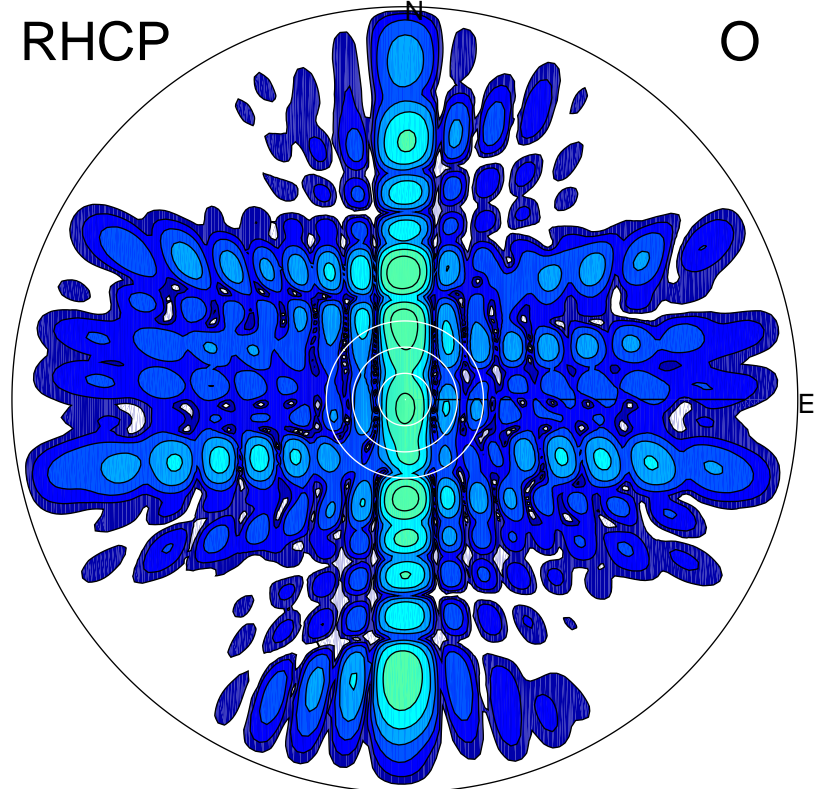
LHCP

X



RHCP

O



ERP 469.9 MW

Peak gain 27.8 dBi at Az 180 Zen 12
RHCP gain 0.2 dBi
N-S peak 27.8 dBi at Zen -12.3
N-S -3 dB beamwidth 5.9 deg.

ERP 5.9 MW

Peak gain 8.8 dBi at Az 359 Zen 29
LHCP gain 19.5 dBi
N-S peak 8.7 dBi at Zen 29.0
N-S -3 dB beamwidth 5.9 deg.