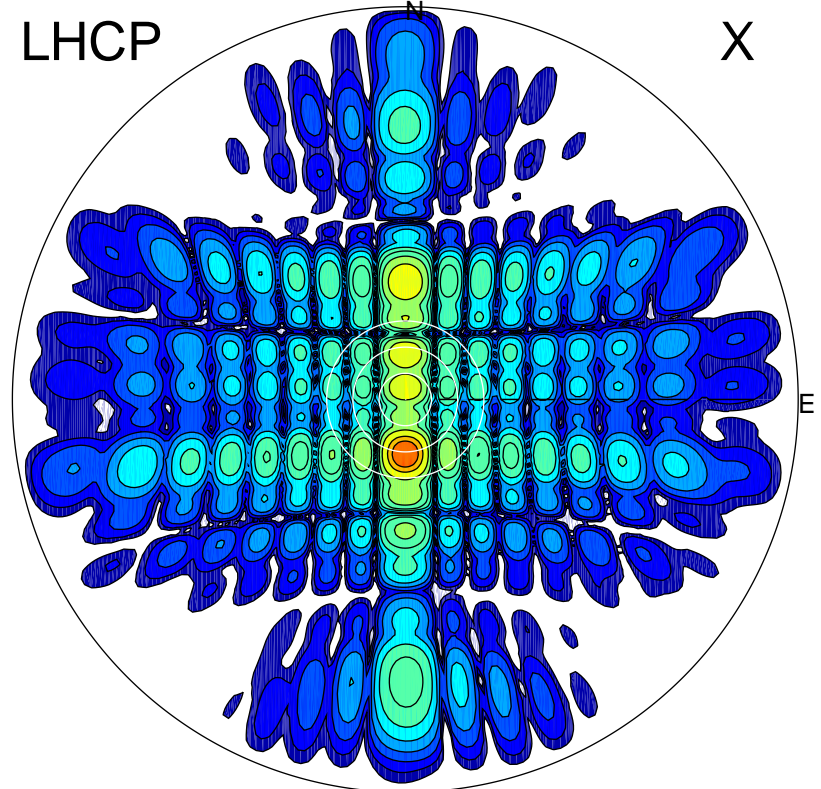


2013-10-25 15:35:25 A1 6.76500000 MHz 784.0 kW

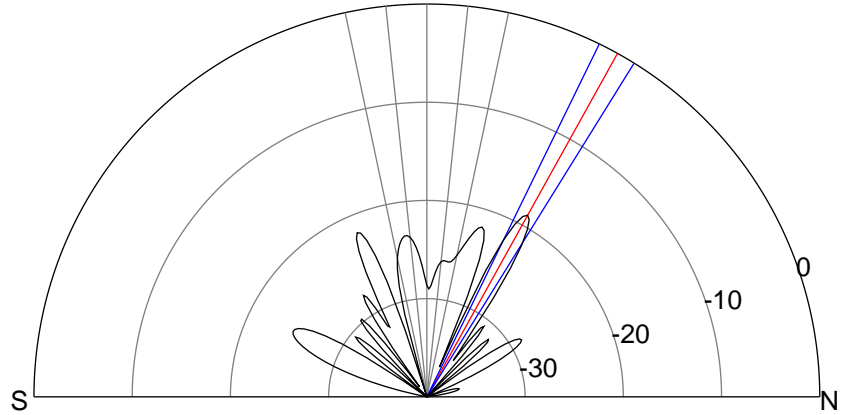
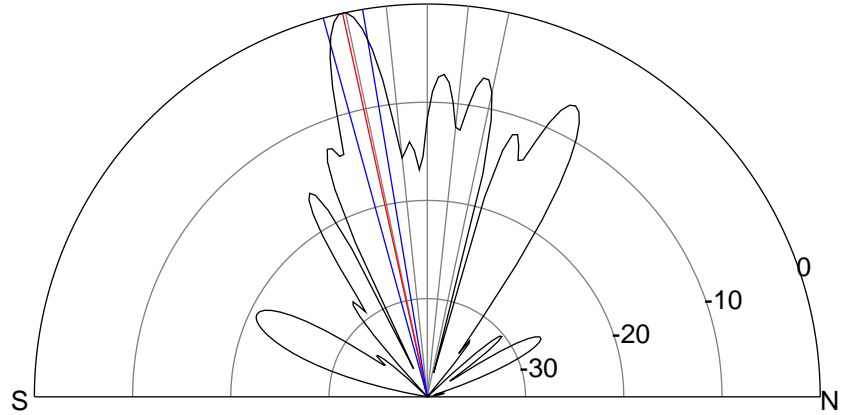
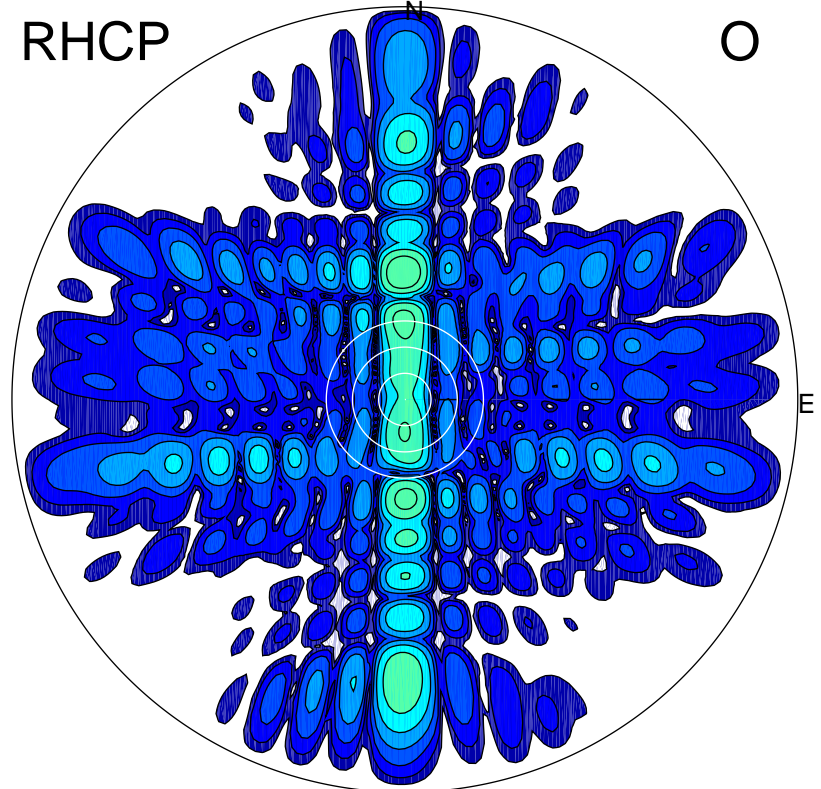
LHCP

X



RHCP

O



### ERP 454.7 MW

Peak gain 27.6 dBi at Az 180 Zen 12  
RHCP gain 2.1 dBi  
N-S peak 27.7 dBi at Zen -12.5  
N-S -3 dB beamwidth 5.9 deg.

### ERP 6.0 MW

Peak gain 8.8 dBi at Az 359 Zen 29  
LHCP gain 19.5 dBi  
N-S peak 8.8 dBi at Zen 29.0  
N-S -3 dB beamwidth 5.8 deg.