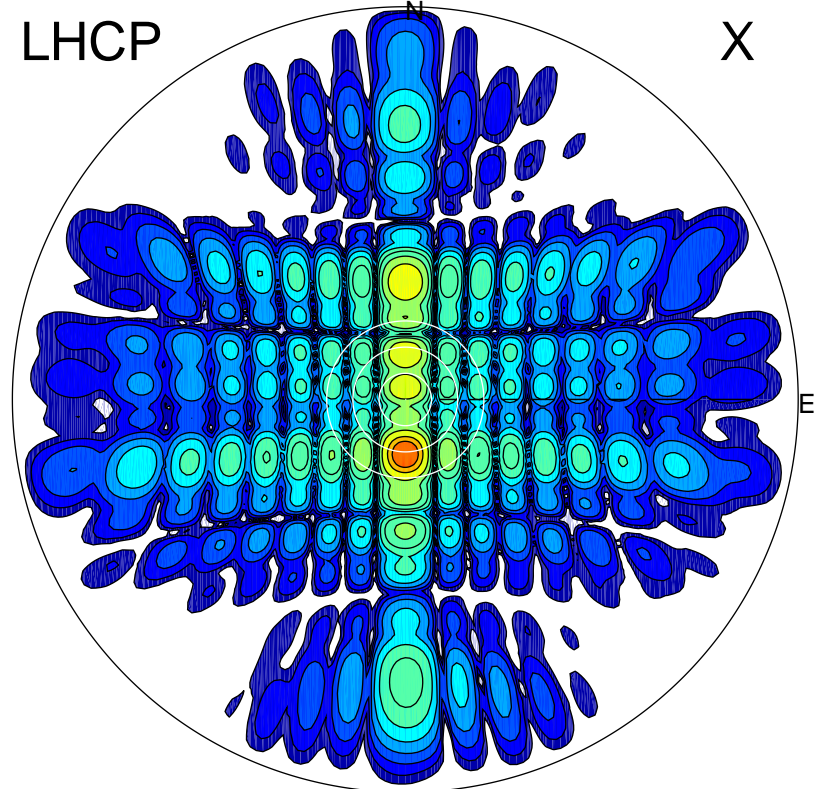


2013-10-25 15:34:45 A1 6.75500000 MHz 786.0 kW

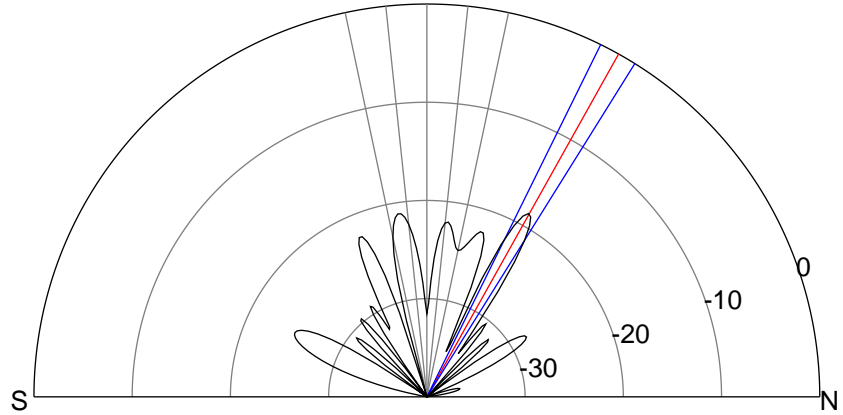
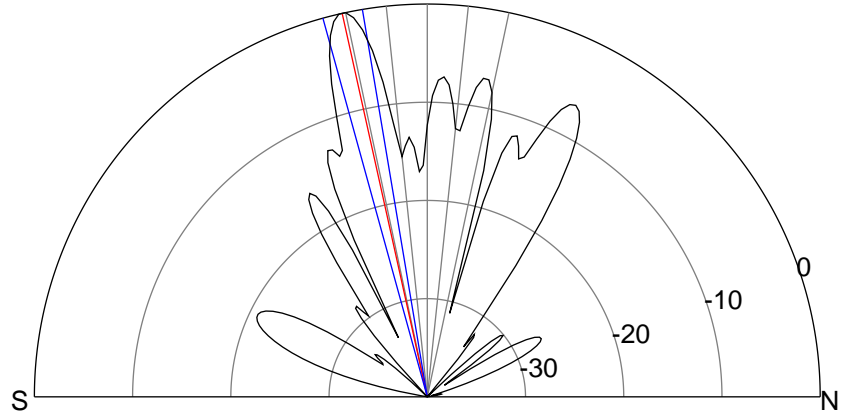
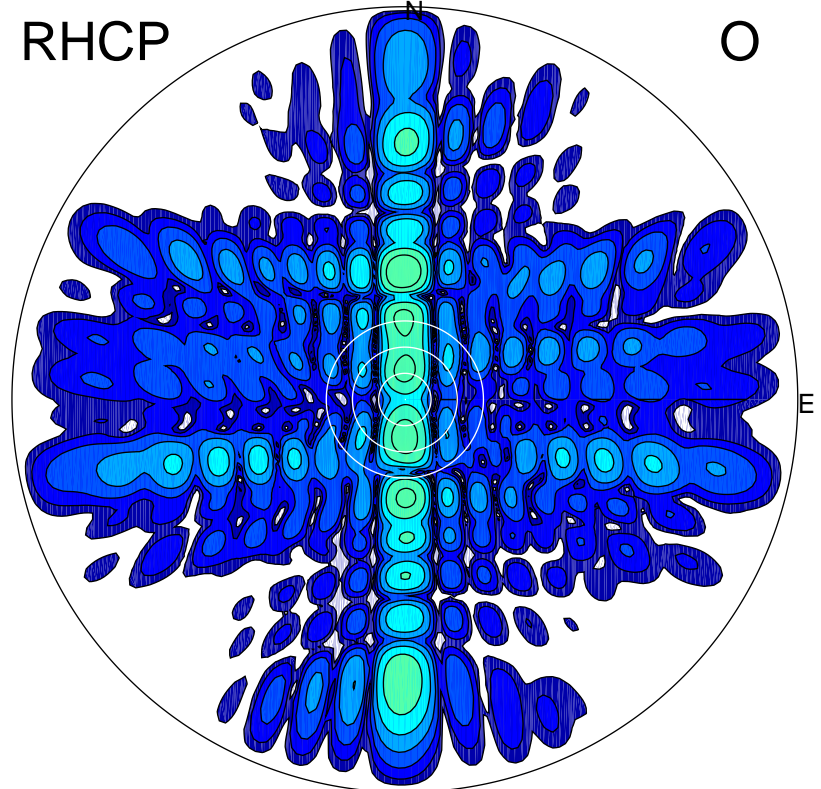
LHCP

X



RHCP

O



ERP 453.7 MW

Peak gain 27.6 dBi at Az 180 Zen 13
RHCP gain 2.5 dBi
N-S peak 27.7 dBi at Zen -12.5
N-S -3 dB beamwidth 5.9 deg.

ERP 6.2 MW

Peak gain 9.0 dBi at Az 359 Zen 29
LHCP gain 19.5 dBi
N-S peak 9.0 dBi at Zen 29.2
N-S -3 dB beamwidth 5.7 deg.