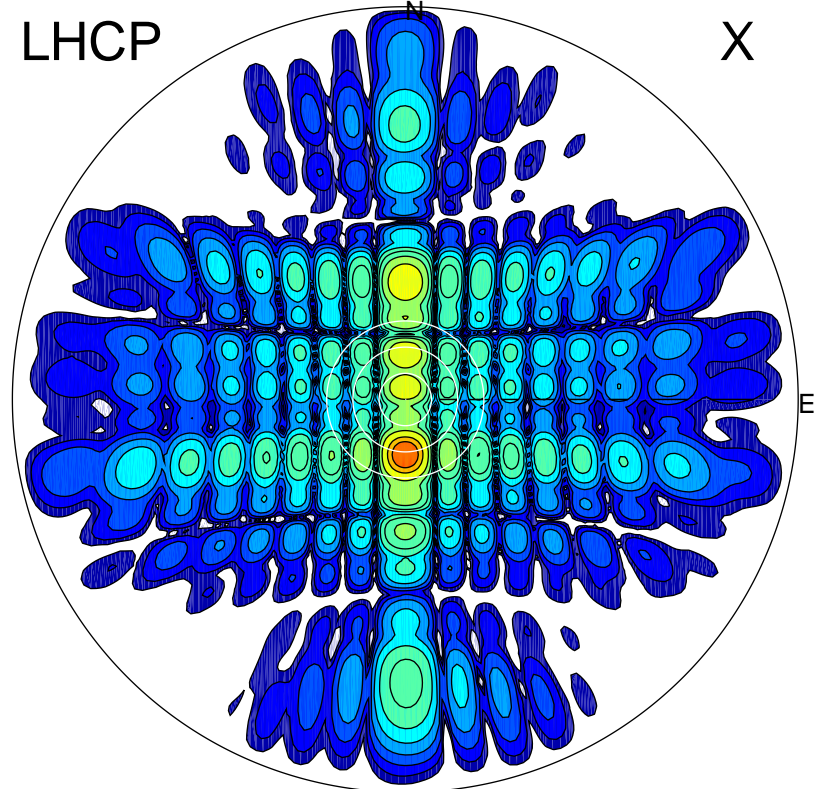


2013-10-25 15:34:05 A1 6.74500000 MHz 792.0 kW

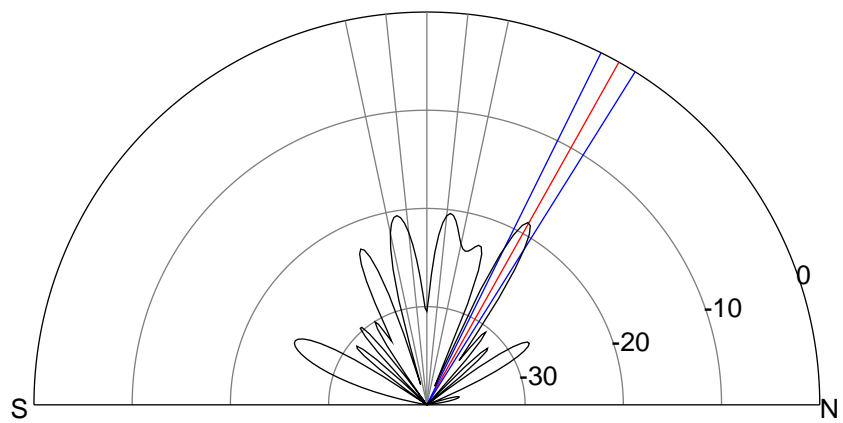
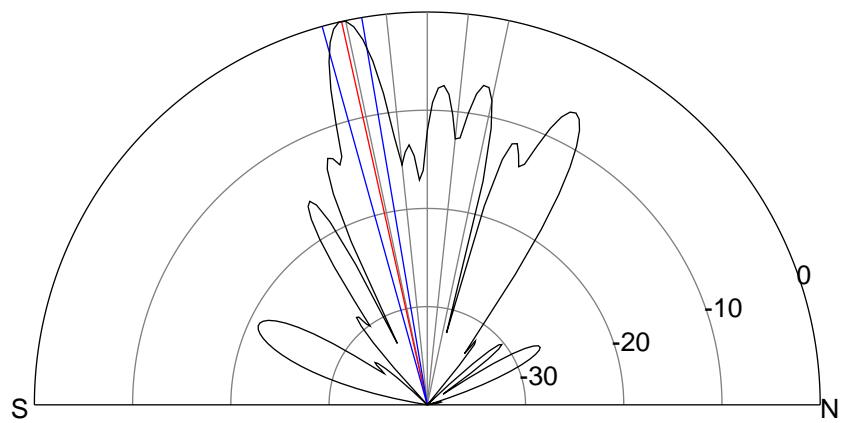
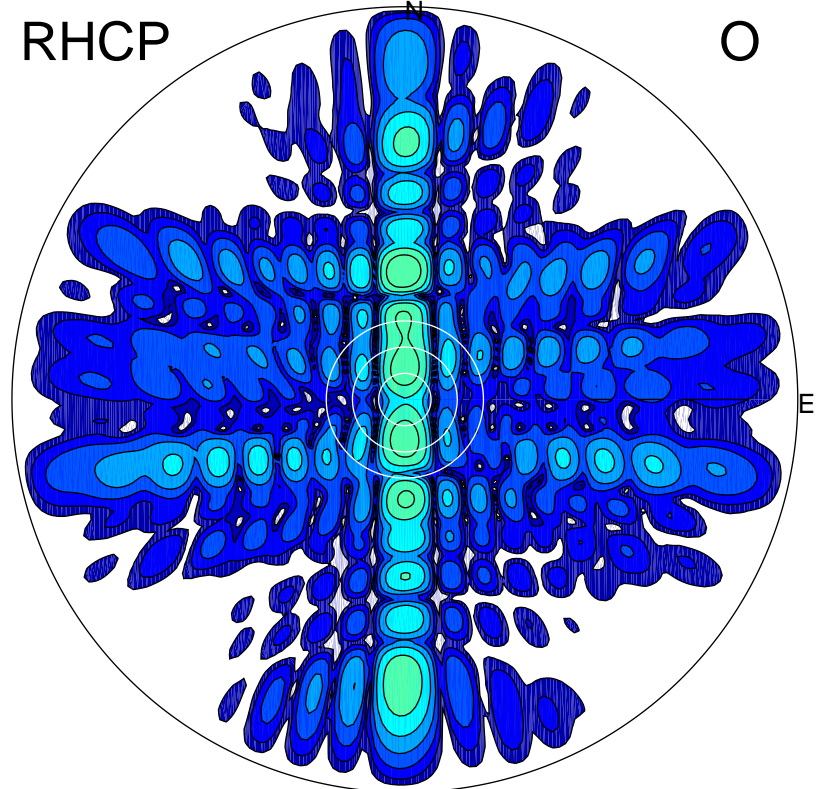
LHCP

X



RHCP

O



### ERP 455.6 MW

Peak gain 27.6 dBi at Az 180 Zen 13  
RHCP gain 4.0 dBi  
N-S peak 27.6 dBi at Zen -12.6  
N-S -3 dB beamwidth 5.9 deg.

### ERP 6.1 MW

Peak gain 8.9 dBi at Az 359 Zen 29  
LHCP gain 19.5 dBi  
N-S peak 8.8 dBi at Zen 29.3  
N-S -3 dB beamwidth 5.7 deg.