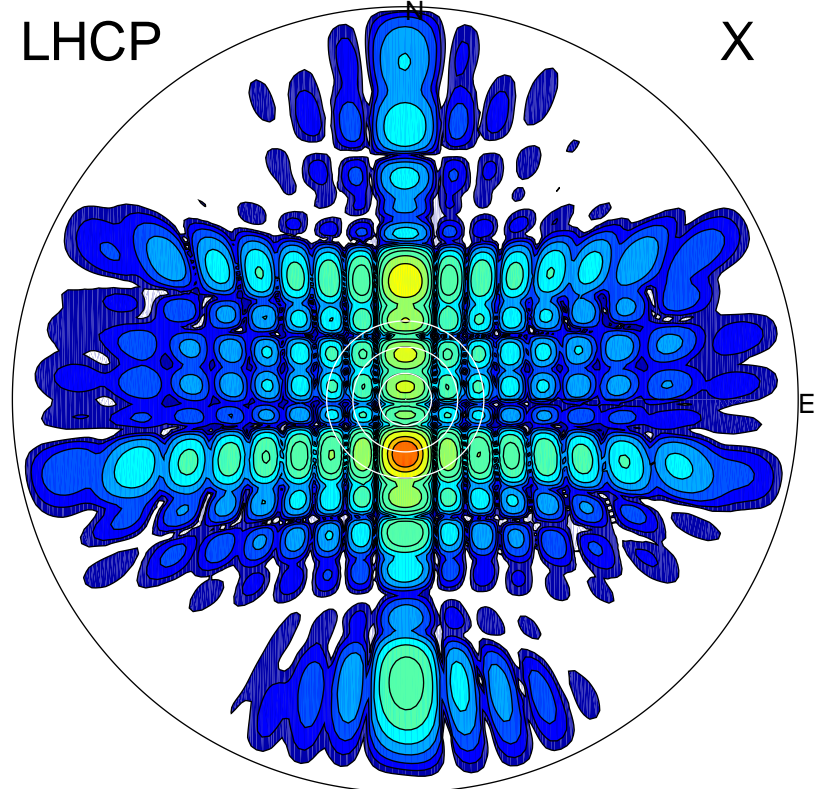


2013-10-25 15:33:25 A1 6.73500000 MHz 850.0 kW

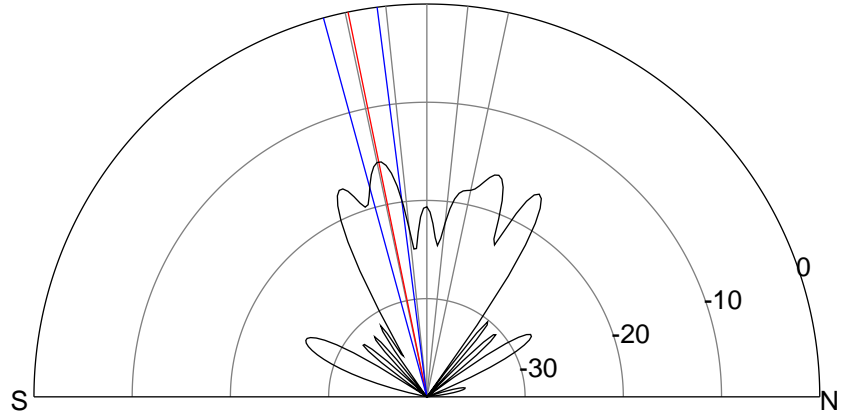
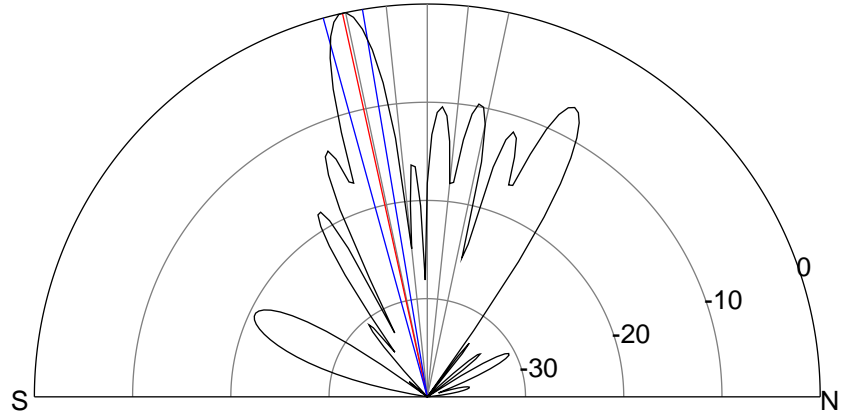
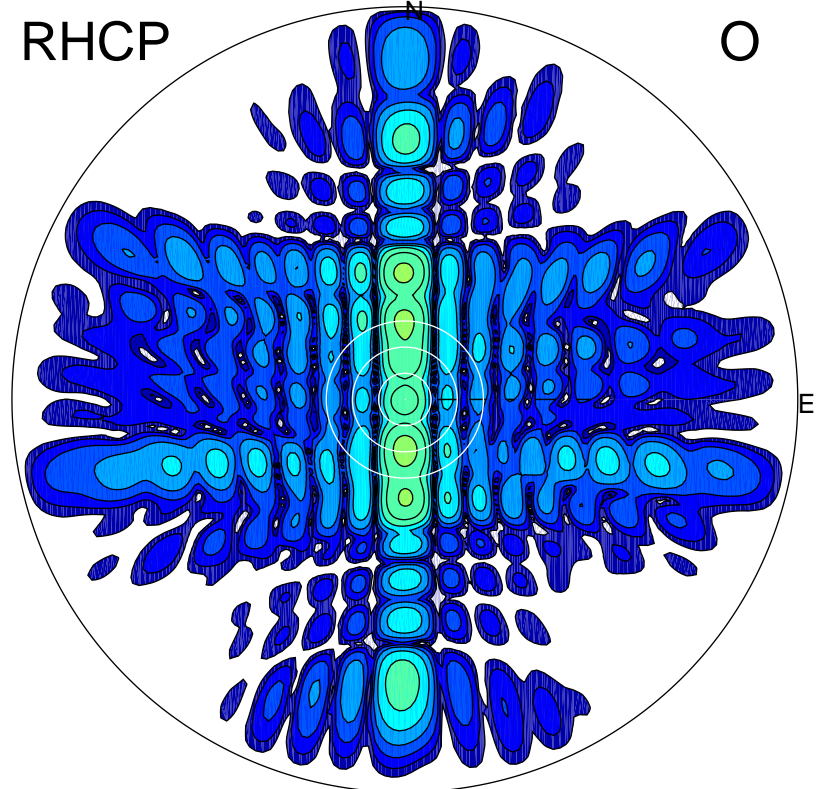
LHCP

X



RHCP

O



ERP 530.0 MW

Peak gain 27.9 dBi at Az 180 Zen 12
RHCP gain 12.3 dBi
N-S peak 28.0 dBi at Zen -12.5
N-S -3 dB beamwidth 5.9 deg.

ERP 14.6 MW

Peak gain 12.3 dBi at Az 180 Zen 12
LHCP gain 27.9 dBi
N-S peak 12.4 dBi at Zen -11.6
N-S -3 dB beamwidth 8.0 deg.