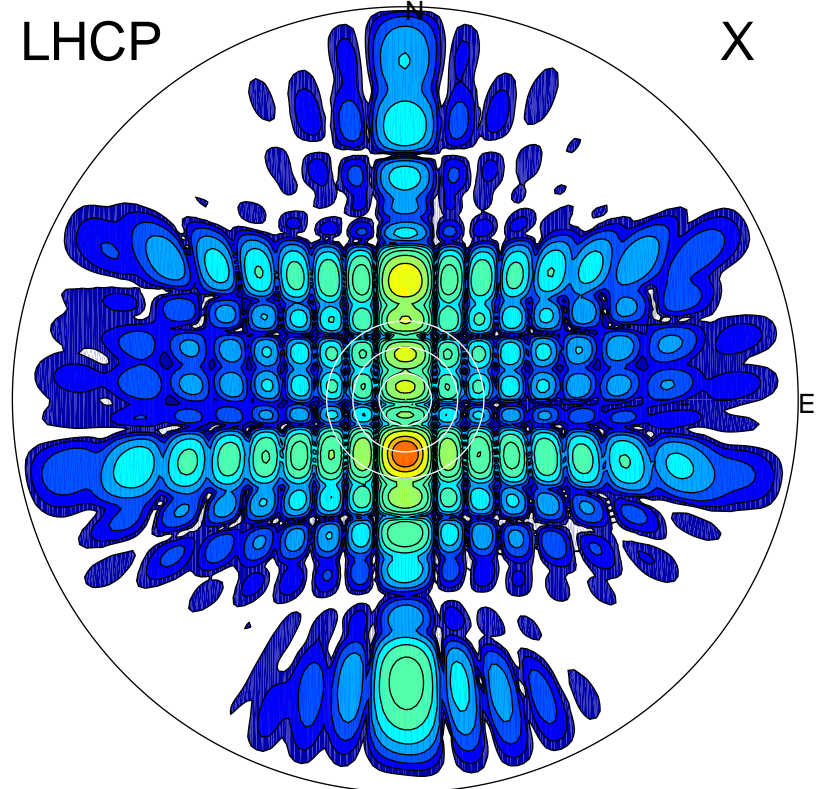


2013-10-25 15:32:45 A1 6.72500000 MHz 849.0 kW

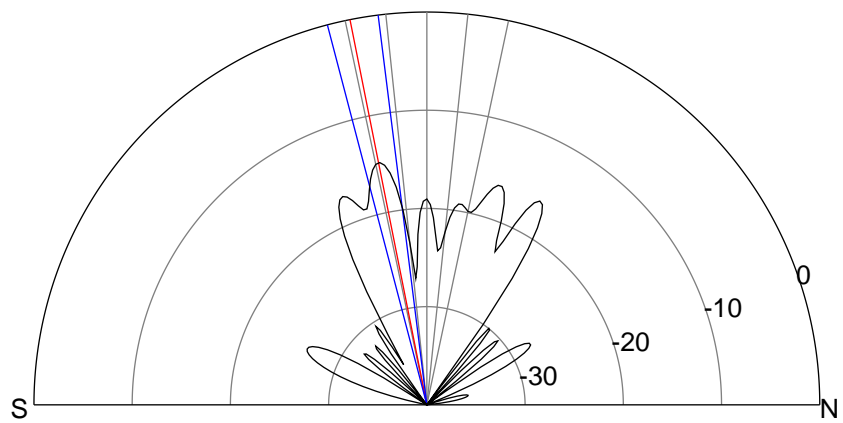
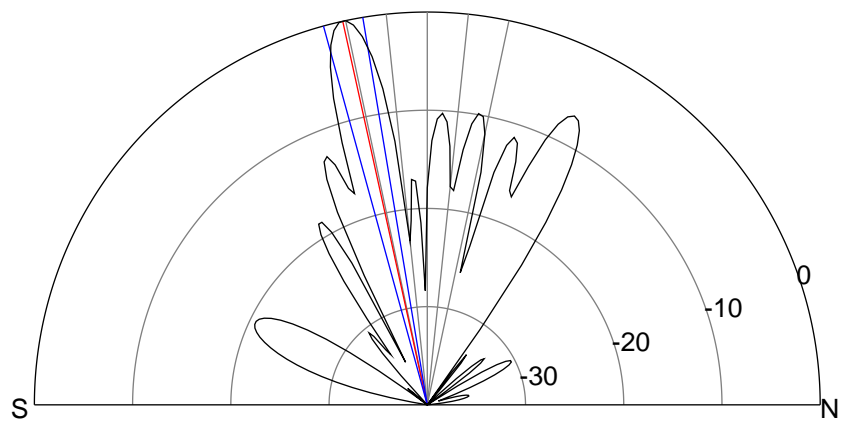
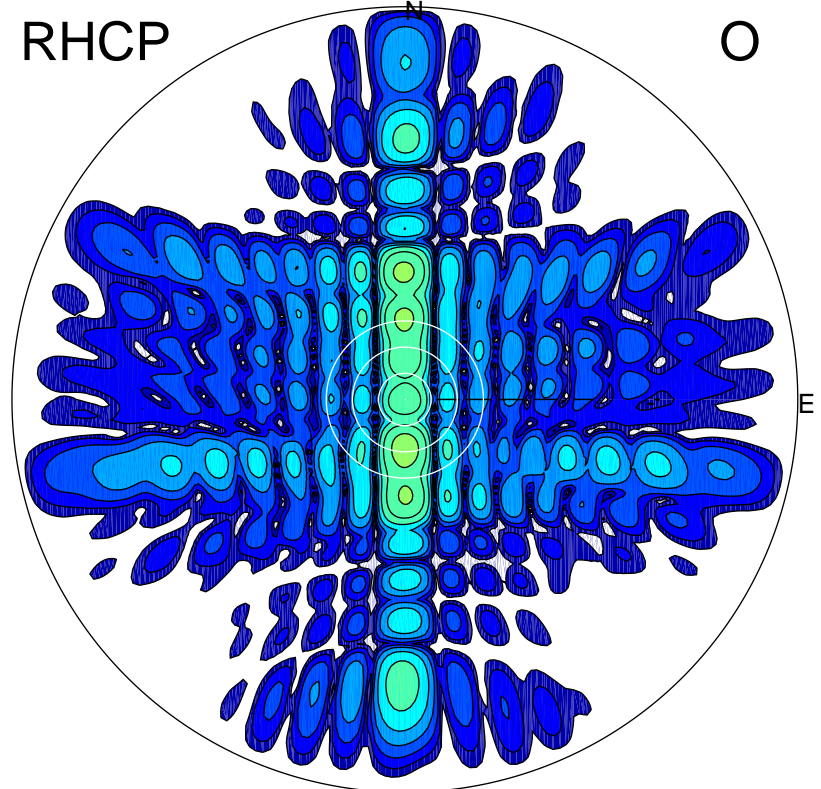
LHCP

X



RHCP

O



ERP 527.0 MW

Peak gain 27.9 dBi at Az 180 Zen 12
RHCP gain 13.0 dBi
N-S peak 28.0 dBi at Zen -12.4
N-S -3 dB beamwidth 5.9 deg.

ERP 17.2 MW

Peak gain 13.1 dBi at Az 180 Zen 11
LHCP gain 27.3 dBi
N-S peak 13.1 dBi at Zen -11.3
N-S -3 dB beamwidth 7.5 deg.