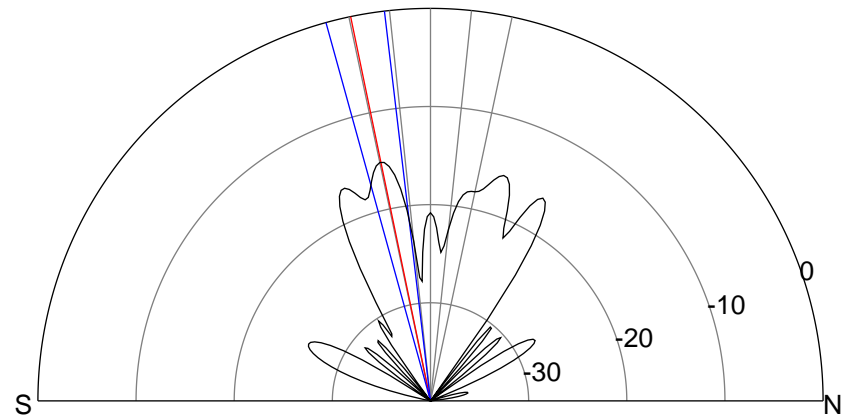
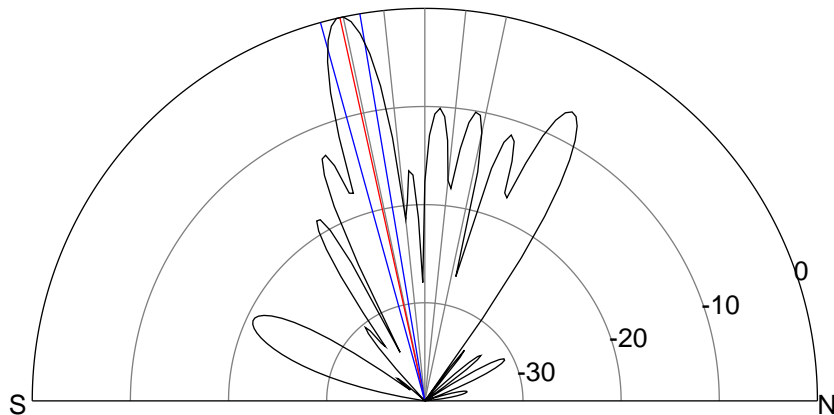
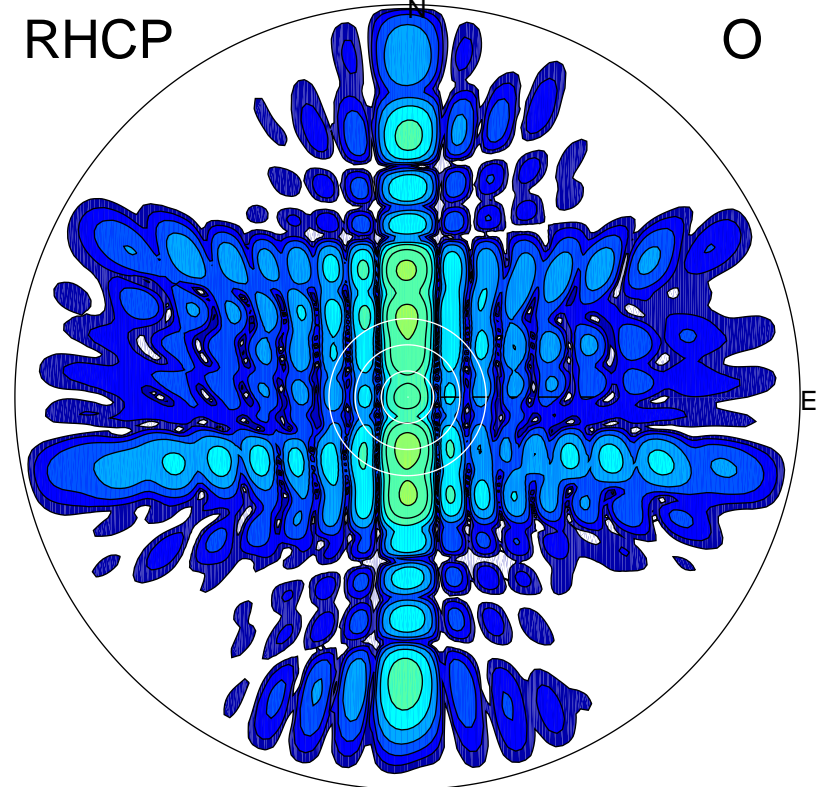
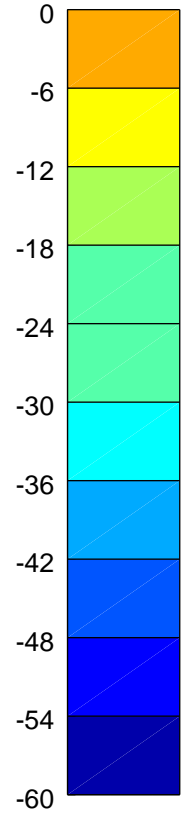
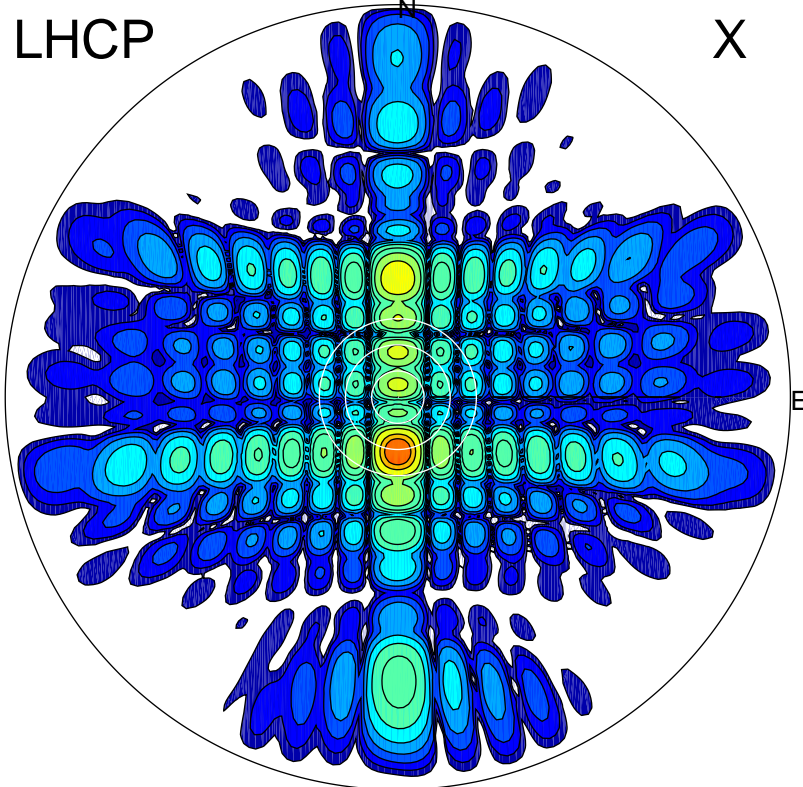


2013-10-25 15:32:05 A1 6.71500000 MHz 848.0 kW



### ERP 521.2 MW

Peak gain 27.9 dBi at Az 180 Zen 12  
RHCP gain 12.7 dBi  
N-S peak 28.0 dBi at Zen -12.5  
N-S -3 dB beamwidth 5.9 deg.

### ERP 15.9 MW

Peak gain 12.7 dBi at Az 180 Zen 12  
LHCP gain 27.9 dBi  
N-S peak 12.7 dBi at Zen -11.7  
N-S -3 dB beamwidth 8.7 deg.