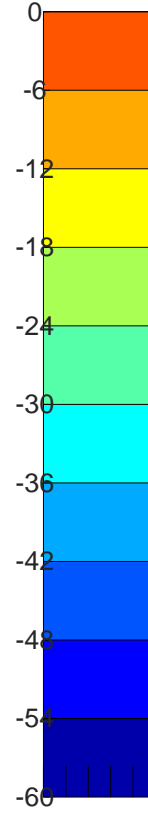
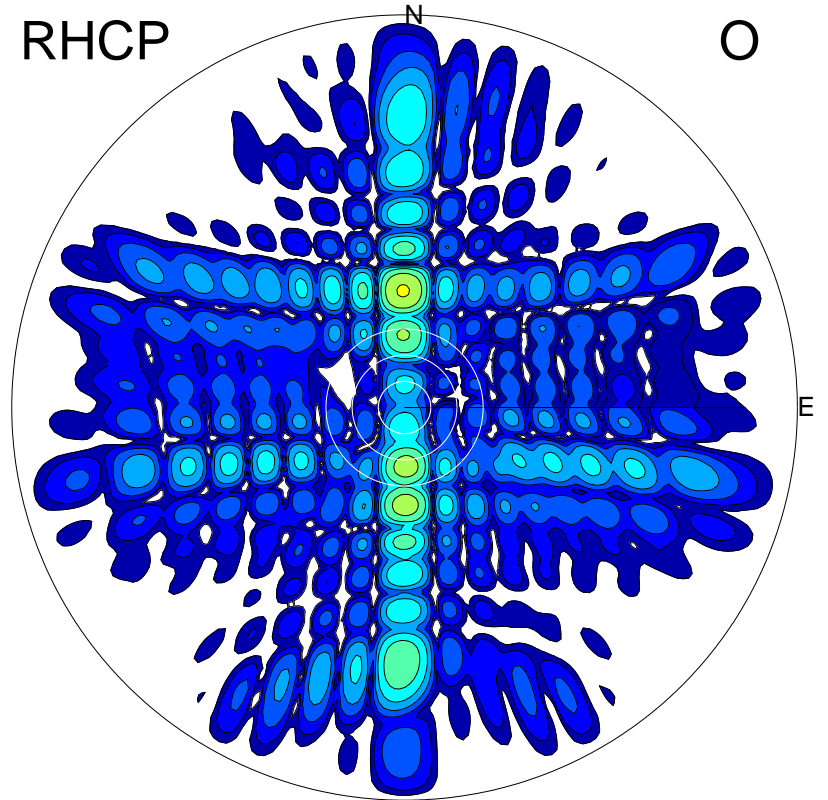
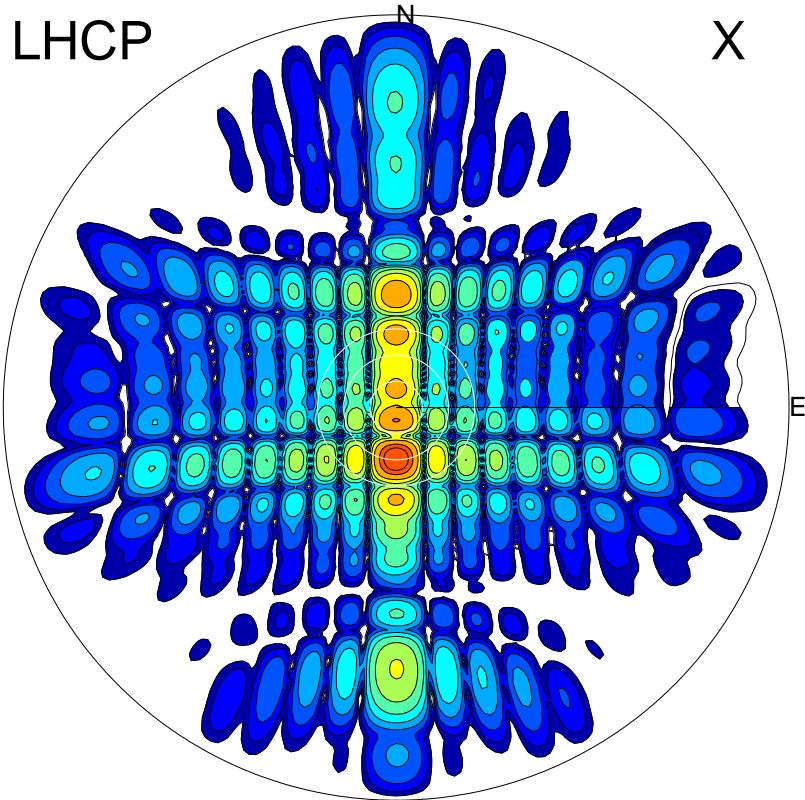
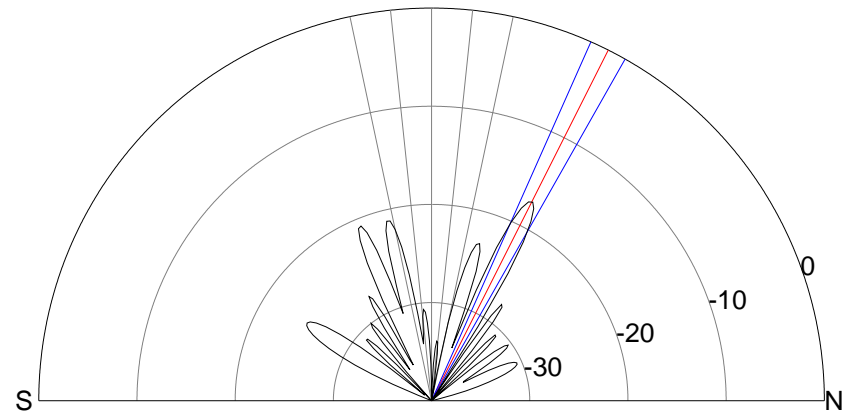
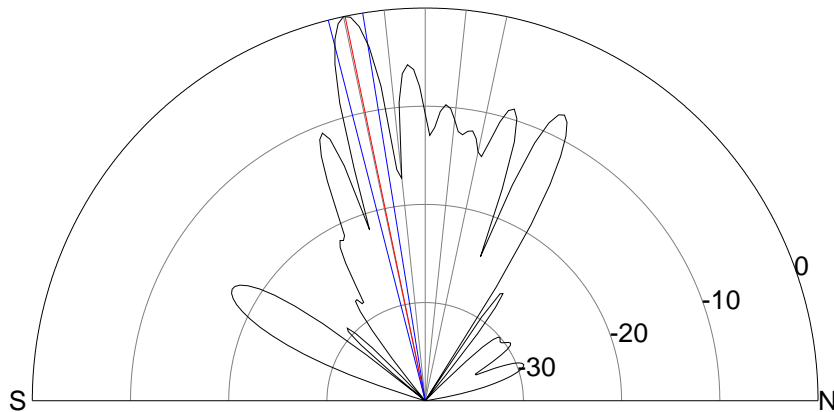


2013-10-22 16:46:57 A1 7.10000000 MHz 822.0 kW



00.0.0.6.81



ERP 554.2 MW

Peak gain 28.3 dBi at Az 180 Zen 12
RHCP gain 6.1 dBi
N-S peak 28.3 dBi at Zen -11.8
N-S -3 dB beamwidth 5.1 deg.

ERP 10.4 MW

Peak gain 11.0 dBi at Az 359 Zen 27
LHCP gain 20.0 dBi
N-S peak 11.0 dBi at Zen 26.7
N-S -3 dB beamwidth 5.6 deg.