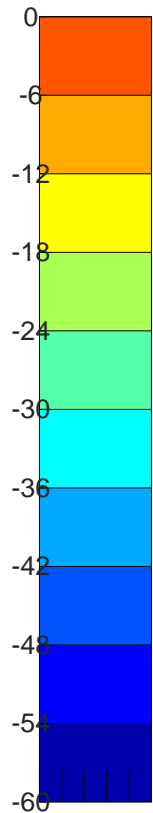
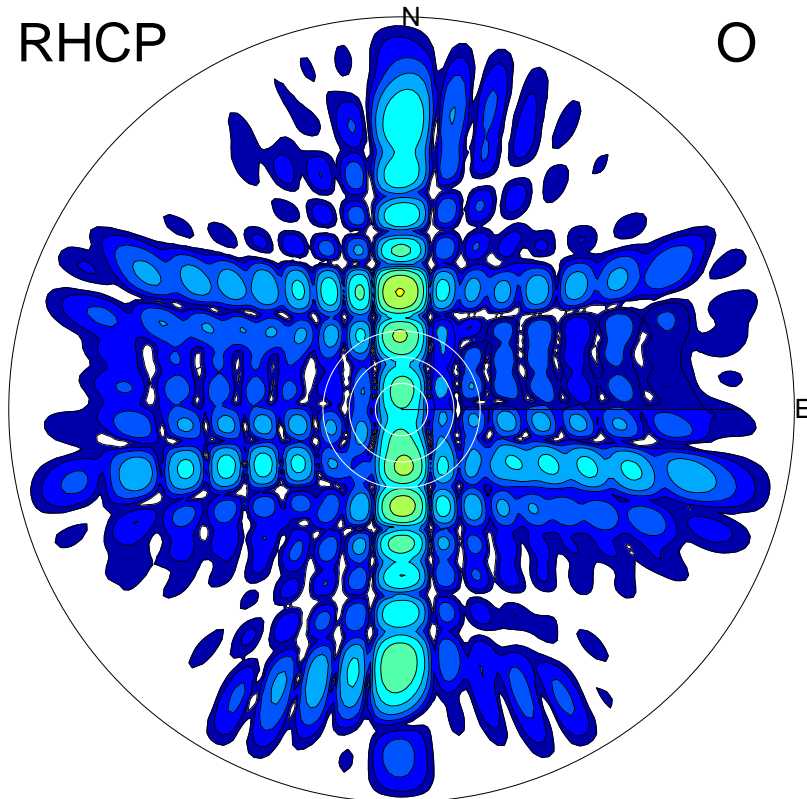
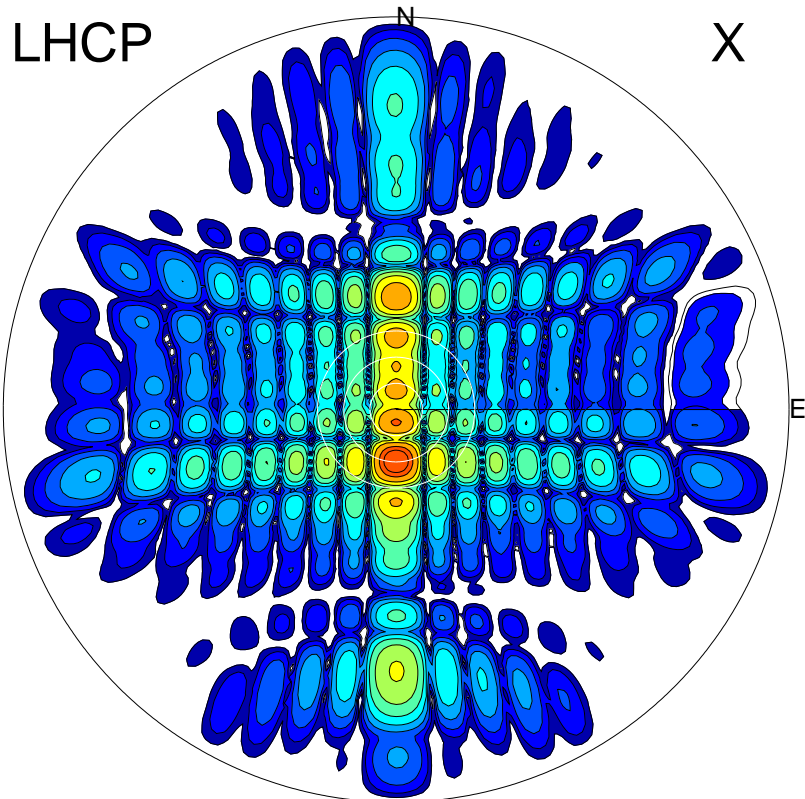
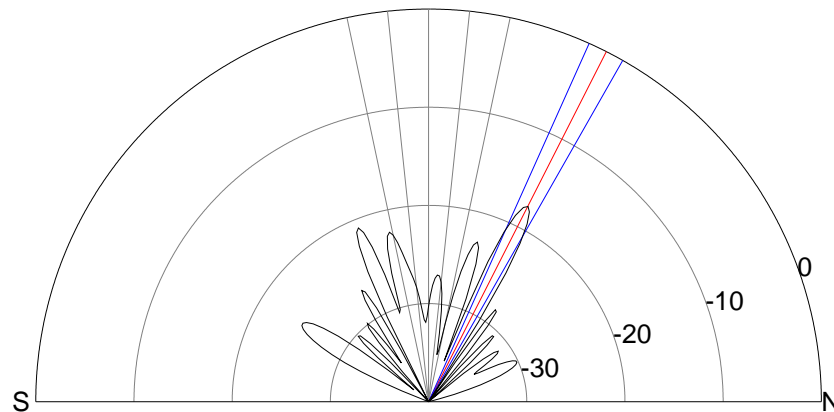
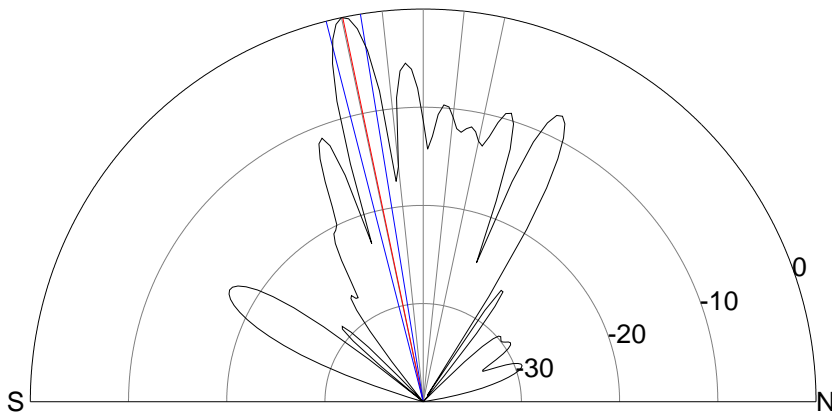


2013-10-22 16:32:57 A1 7.10000000 MHz 811.0 kW



00.0.0.6.81



### ERP 544.6 MW

Peak gain 28.3 dBi at Az 180 Zen 12  
RHCP gain 5.6 dBi  
N-S peak 28.3 dBi at Zen -11.8  
N-S -3 dB beamwidth 5.1 deg.

### ERP 9.4 MW

Peak gain 10.6 dBi at Az 359 Zen 27  
LHCP gain 20.0 dBi  
N-S peak 10.6 dBi at Zen 26.9  
N-S -3 dB beamwidth 5.5 deg.