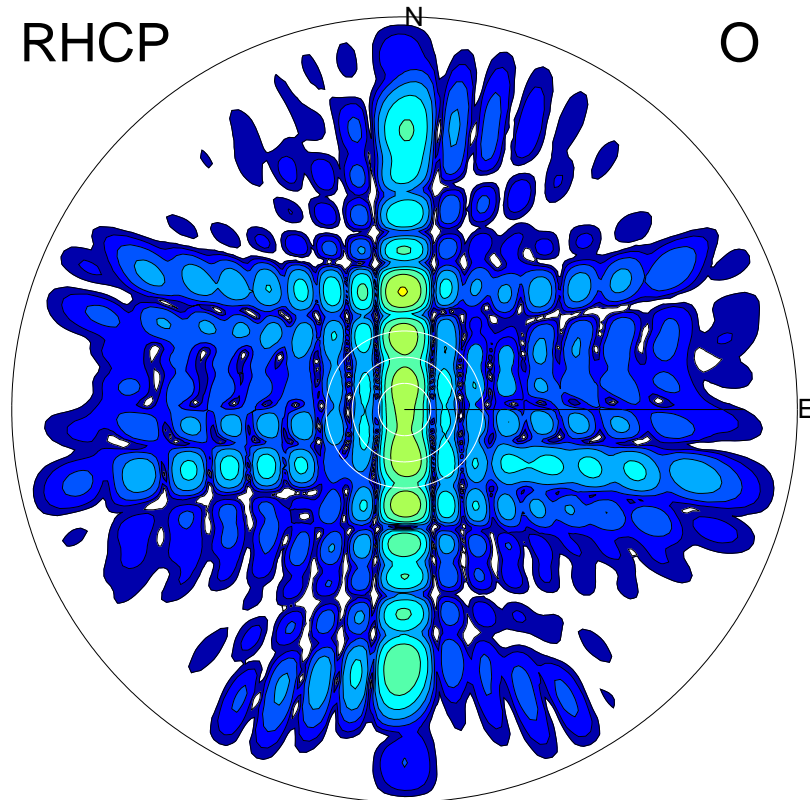
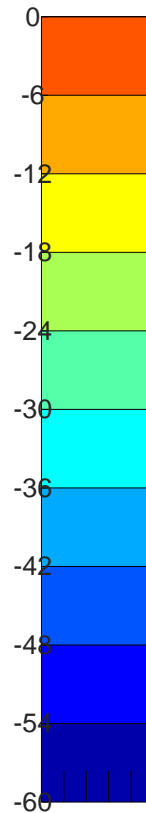
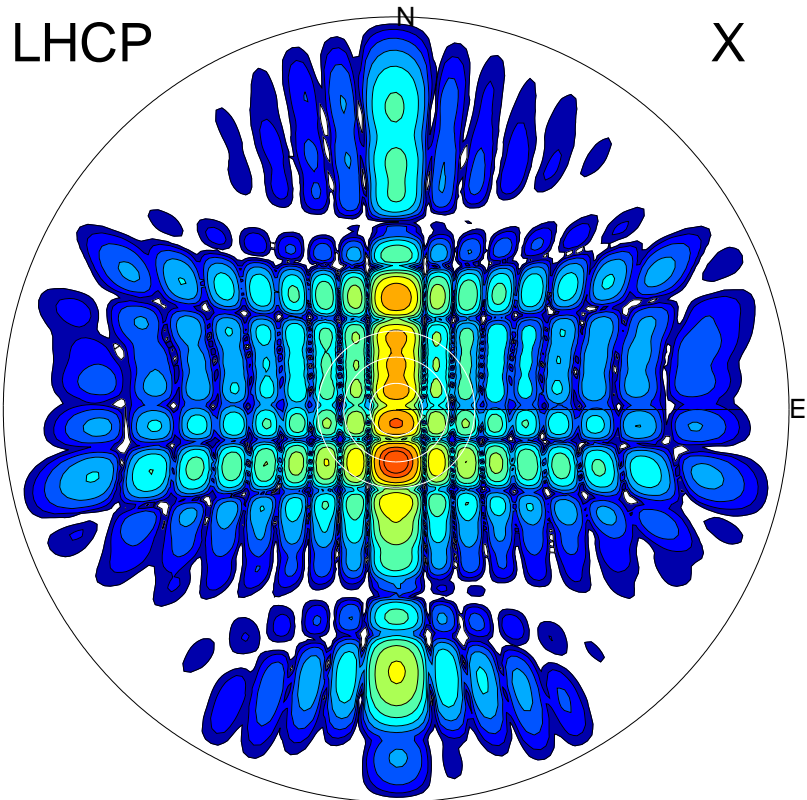
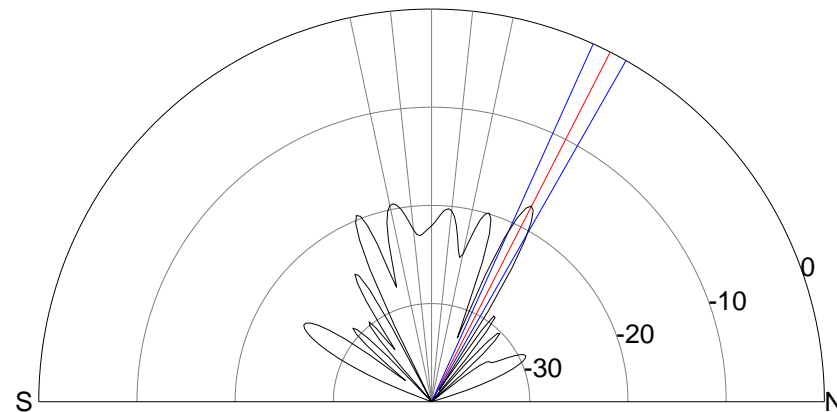
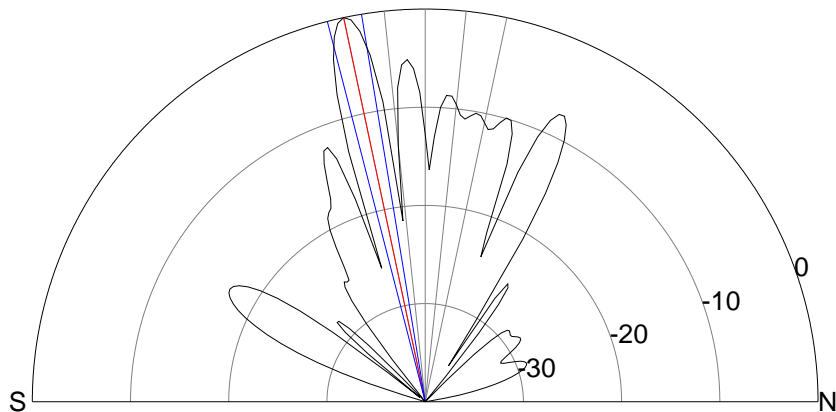


2013-10-22 15:46:57 A1 7.10000000 MHz 802.0 kW



00.0.0.6.81



ERP 515.1 MW

Peak gain 28.1 dBi at Az 180 Zen 12
RHCP gain 8.5 dBi
N-S peak 28.1 dBi at Zen -12.0
N-S -3 dB beamwidth 5.1 deg.

ERP 9.0 MW

Peak gain 10.5 dBi at Az 359 Zen 27
LHCP gain 19.6 dBi
N-S peak 10.4 dBi at Zen 27.1
N-S -3 dB beamwidth 5.4 deg.