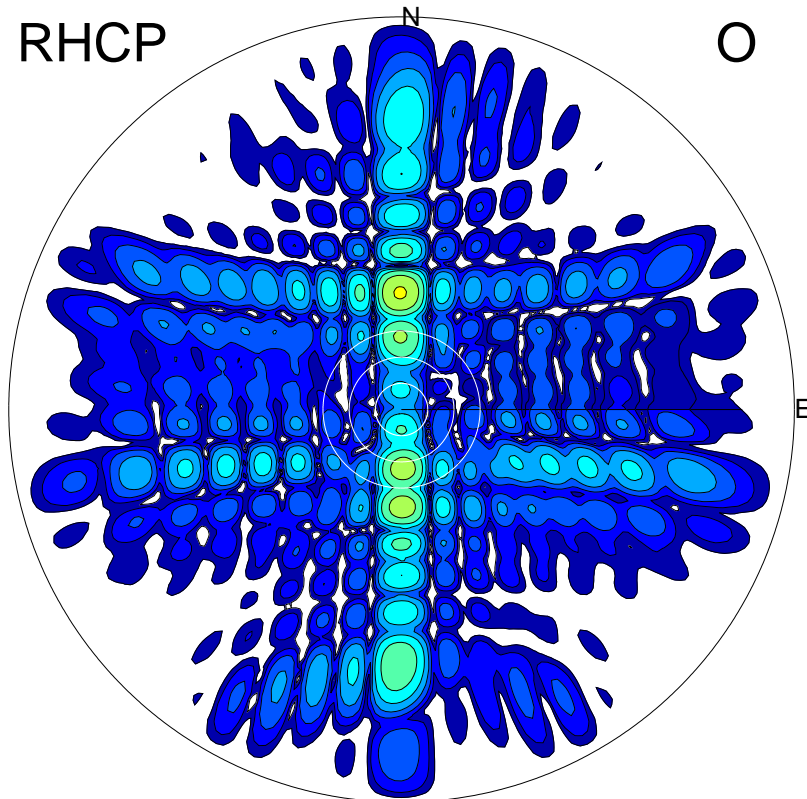
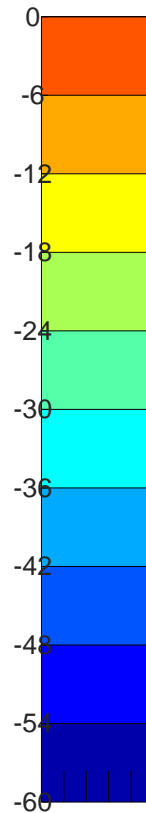
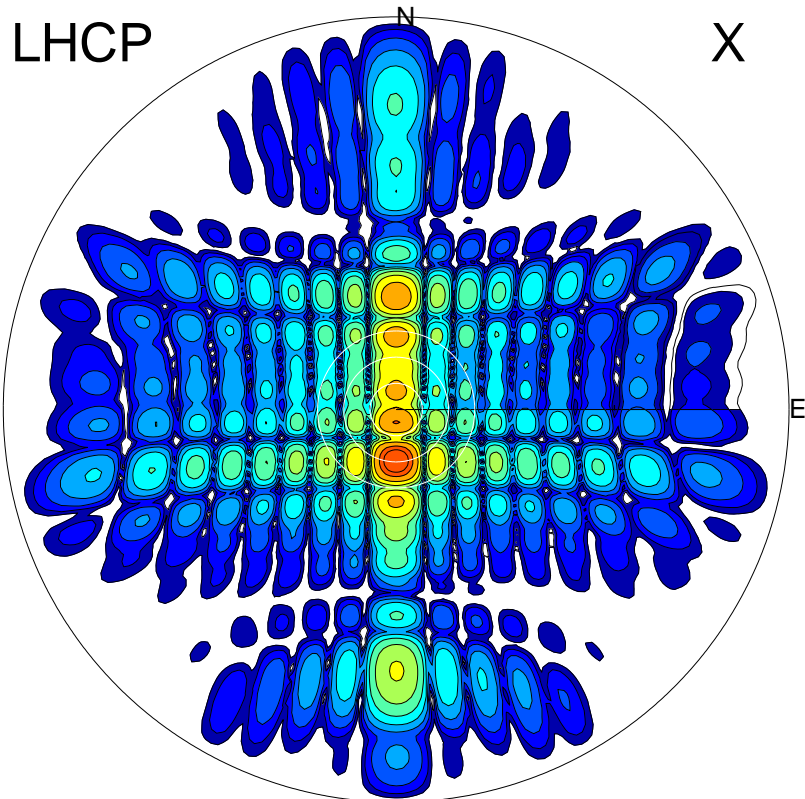
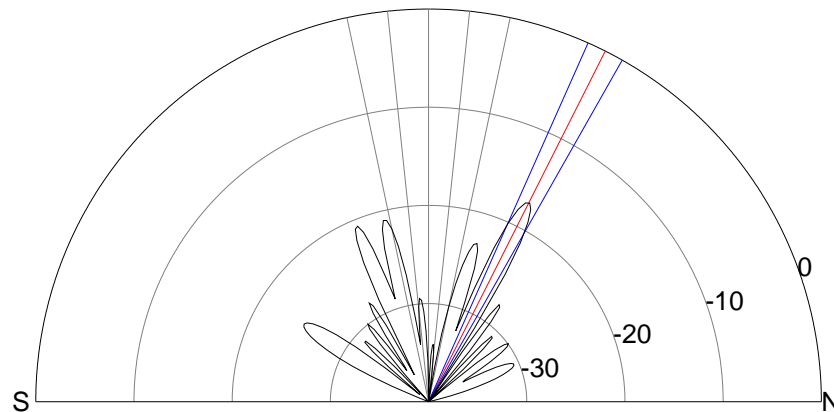
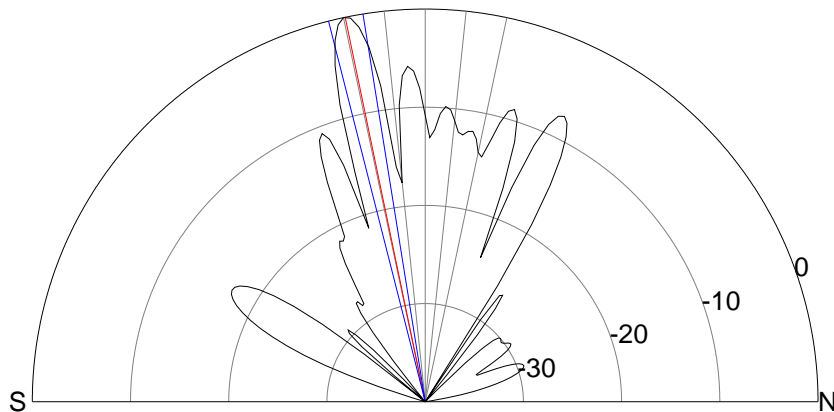


2013-10-22 15:31:08 A1 7.10000000 MHz 796.0 kW



00.0.0.6.81



### ERP 536.6 MW

Peak gain 28.3 dBi at Az 180 Zen 12  
RHCP gain 6.3 dBi  
N-S peak 28.3 dBi at Zen -11.7  
N-S -3 dB beamwidth 5.1 deg.

### ERP 10.1 MW

Peak gain 11.0 dBi at Az 359 Zen 27  
LHCP gain 20.0 dBi  
N-S peak 11.0 dBi at Zen 26.7  
N-S -3 dB beamwidth 5.6 deg.