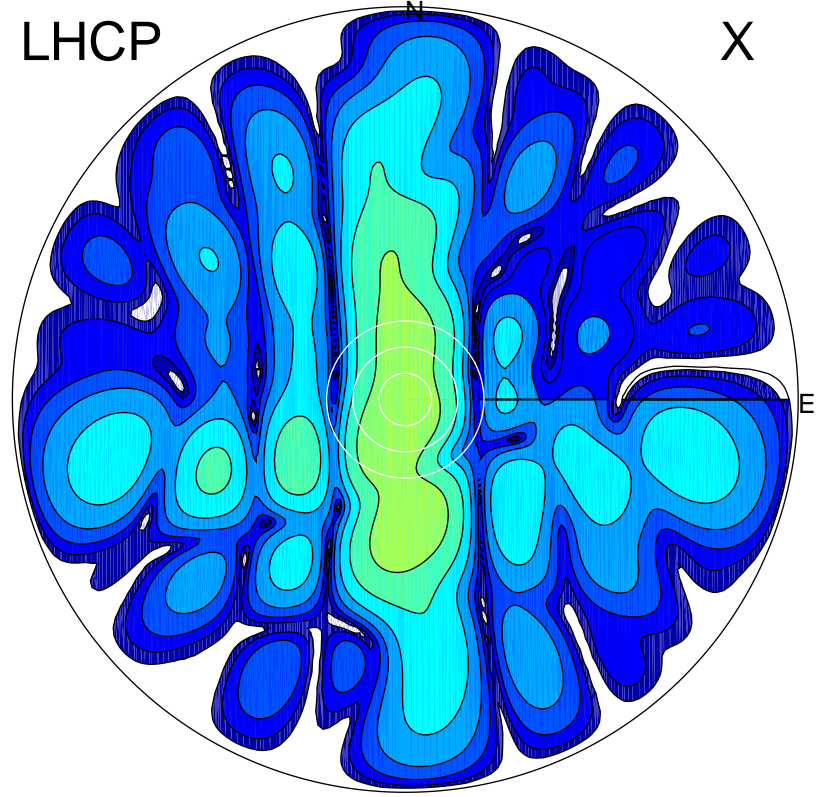


2013-10-21 18:22:50 A2 4.04000000 MHz 870.0 kW

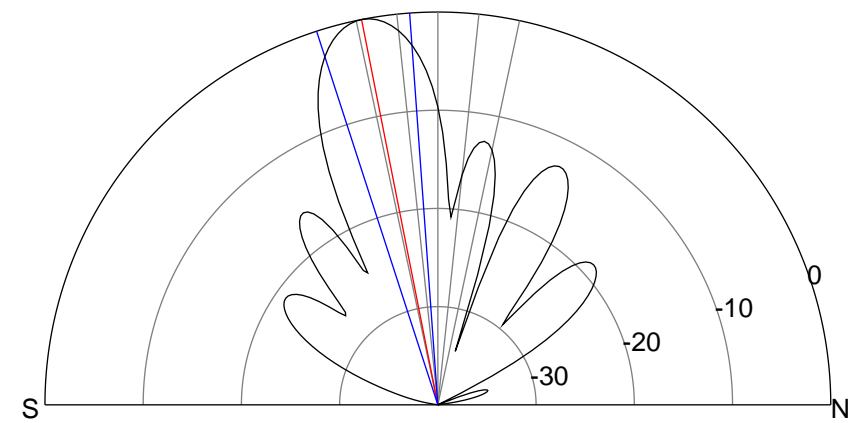
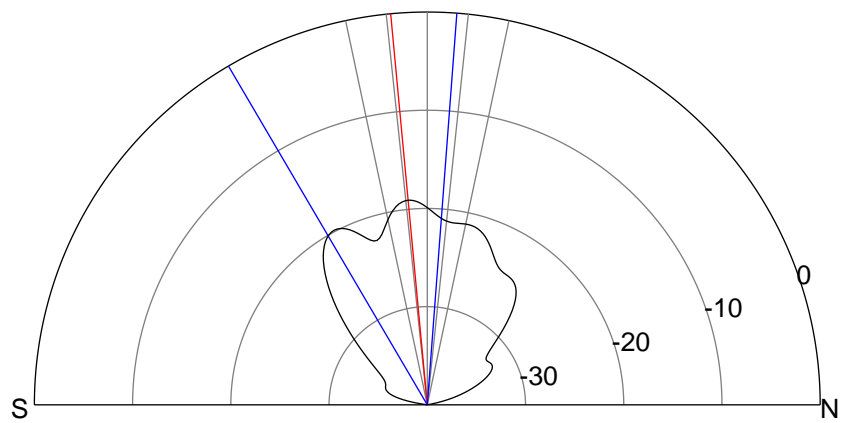
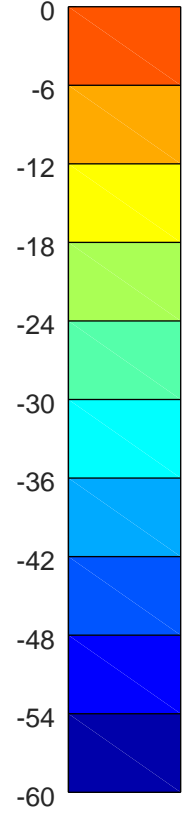
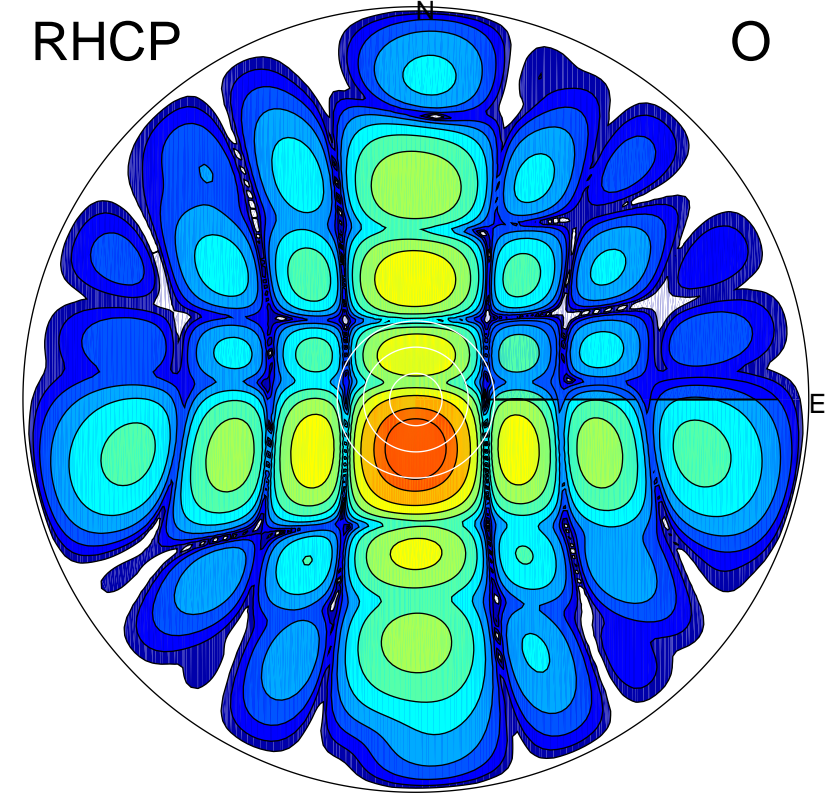
LHCP

X



RHCP

O



### ERP 1.9 MW

Peak gain 3.3 dBi at Az 199 Zen 7  
RHCP gain 20.6 dBi  
N-S peak 3.1 dBi at Zen -5.3  
N-S -3 dB beamwidth 34.7 deg.

### ERP 143.5 MW

Peak gain 22.2 dBi at Az 180 Zen 11  
LHCP gain 1.9 dBi  
N-S peak 22.2 dBi at Zen -11.2  
N-S -3 dB beamwidth 13.9 deg.