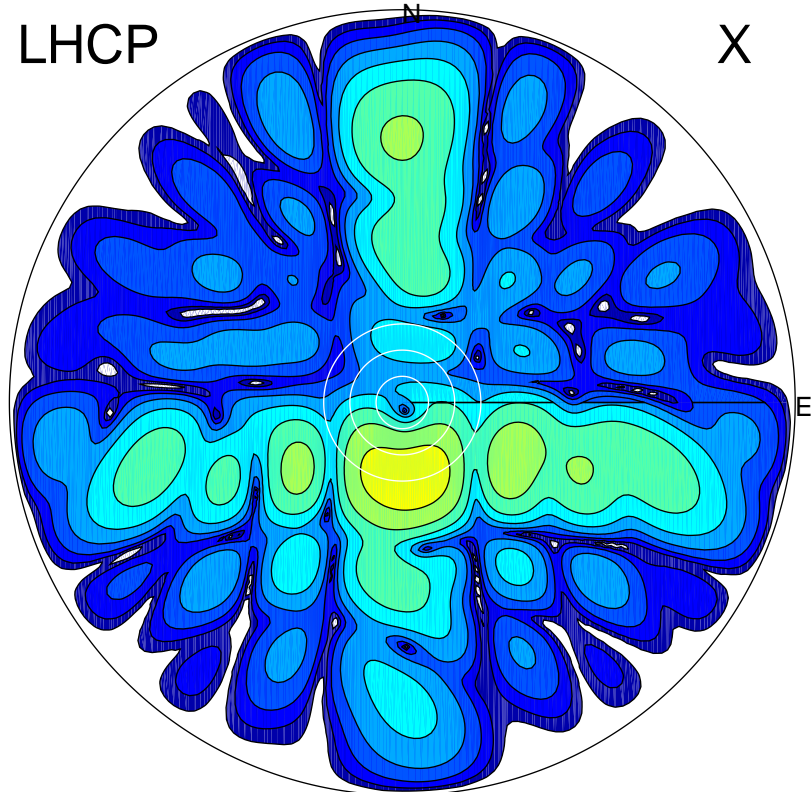


2013-10-21 16:27:50 A3 6.20000000 MHz 862.0 kW

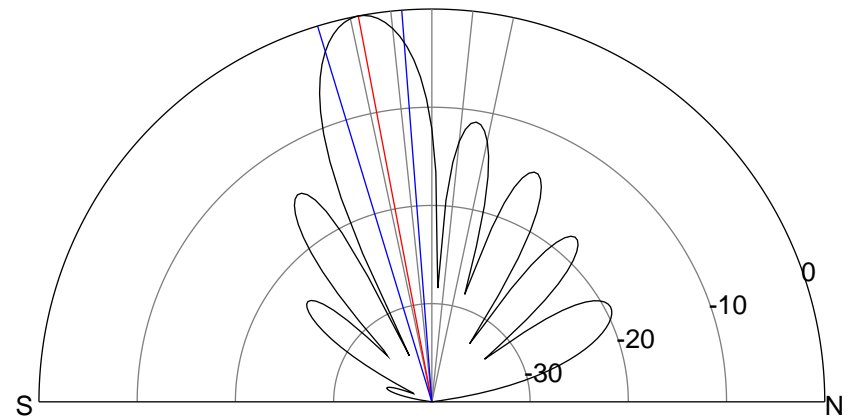
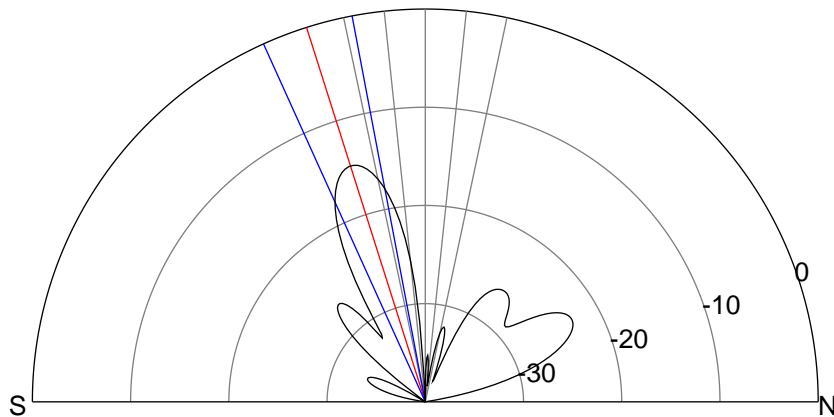
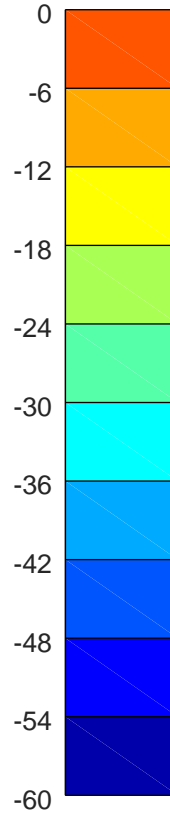
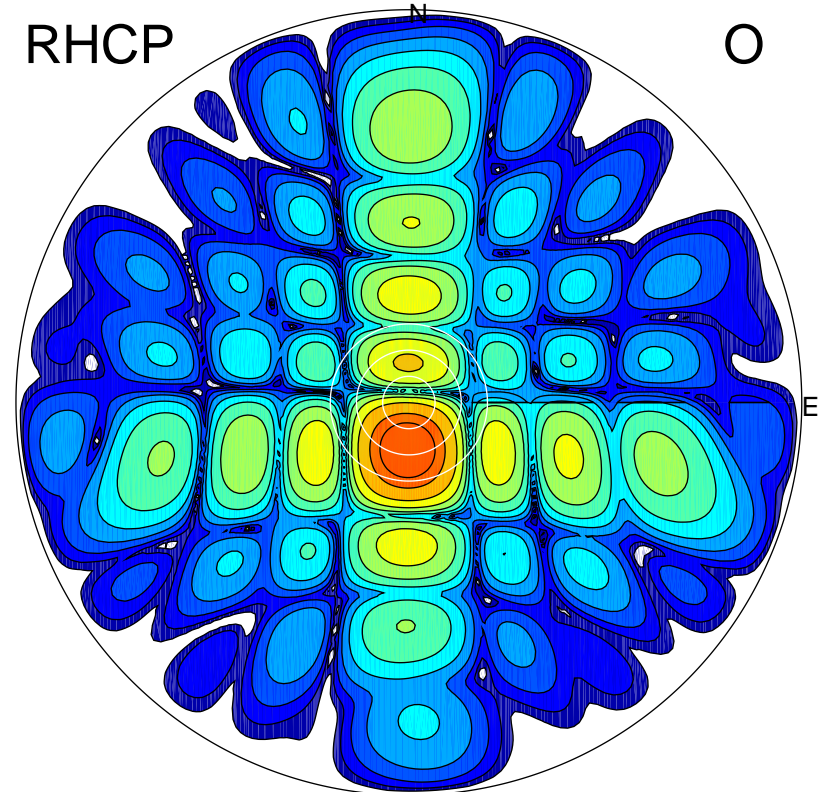
LHCP

X



RHCP

O



ERP 5.7 MW

Peak gain 8.2 dBi at Az 170 Zen 17
RHCP gain 19.5 dBi
N-S peak 8.0 dBi at Zen -17.6
N-S -3 dB beamwidth 13.6 deg.

ERP 163.9 MW

Peak gain 22.8 dBi at Az 183 Zen 11
LHCP gain 5.1 dBi
N-S peak 22.8 dBi at Zen -10.8
N-S -3 dB beamwidth 12.5 deg.