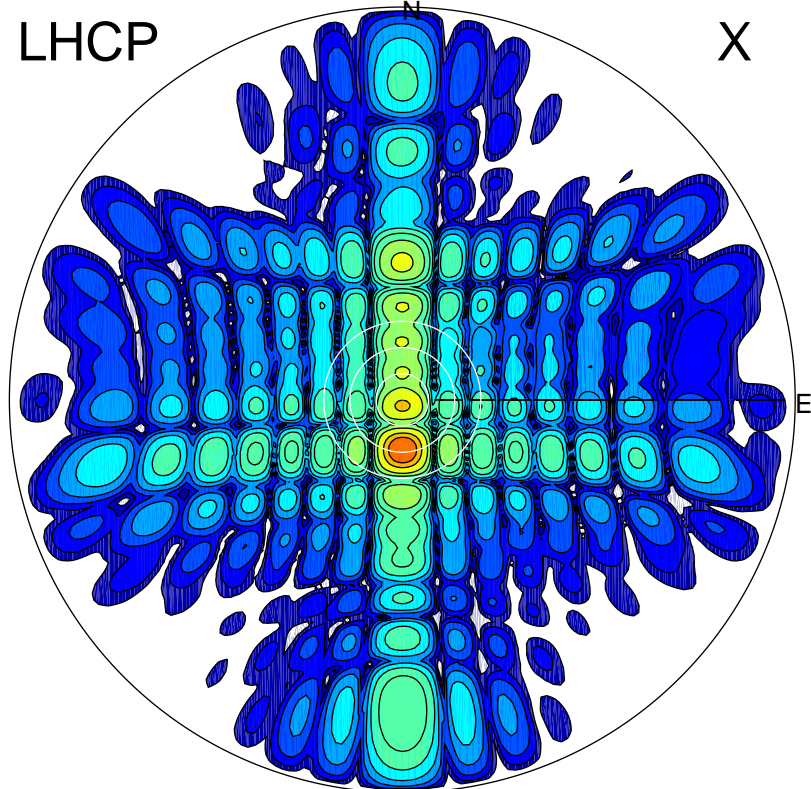


2013-10-18 12:47:02 A1 6.20000000 MHz 798.0 kW

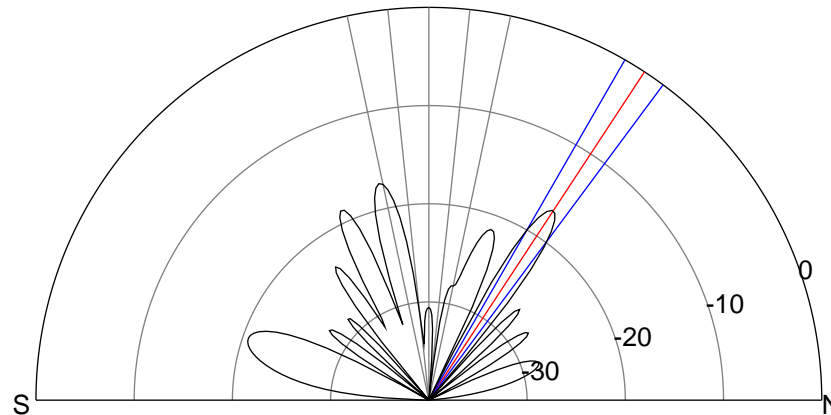
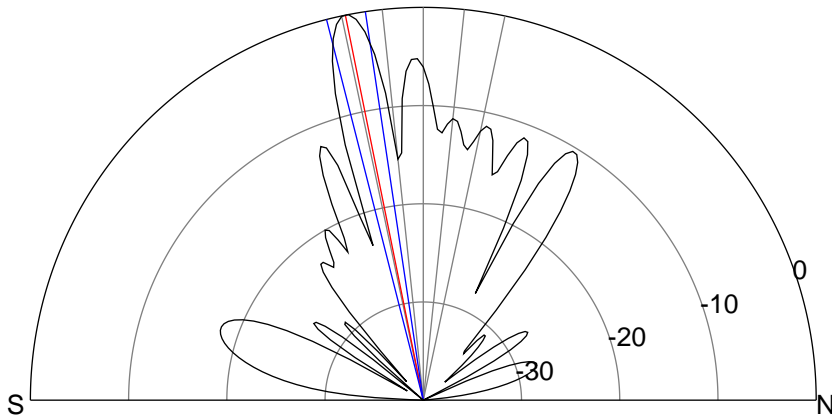
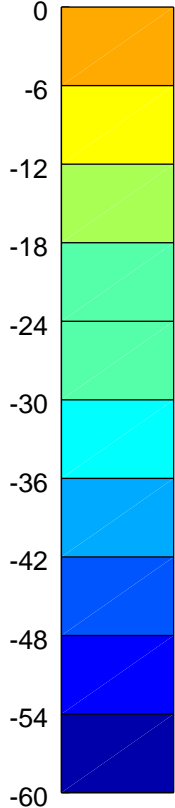
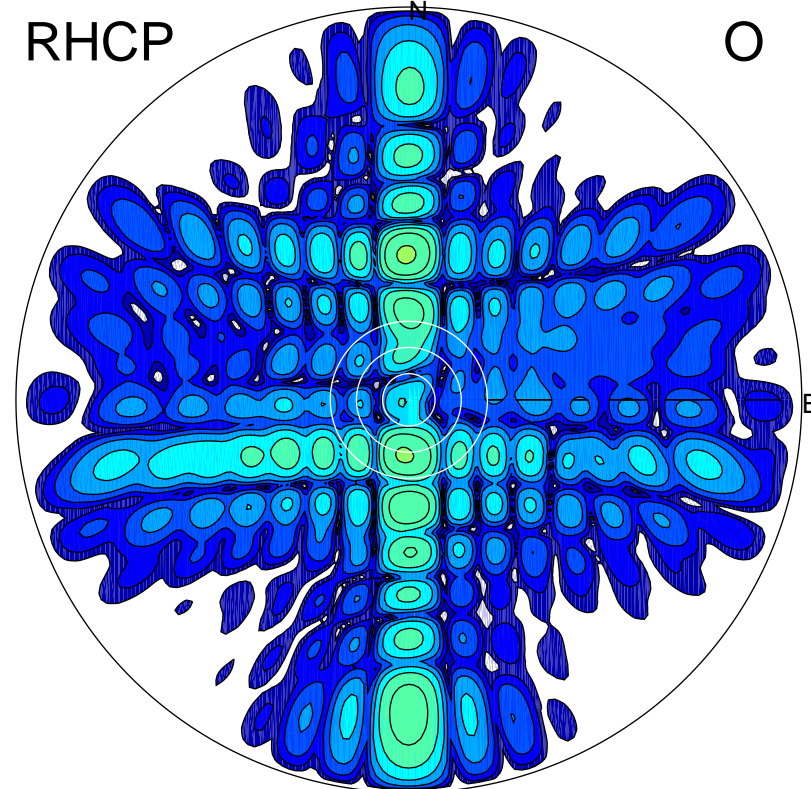
LHCP

X



RHCP

O



ERP 432.3 MW

Peak gain 27.3 dBi at Az 179 Zen 11
RHCP gain 9.1 dBi
N-S peak 27.4 dBi at Zen -11.4
N-S -3 dB beamwidth 5.8 deg.

ERP 8.9 MW

Peak gain 10.5 dBi at Az 359 Zen 33
LHCP gain 16.1 dBi
N-S peak 10.4 dBi at Zen 33.3
N-S -3 dB beamwidth 6.7 deg.