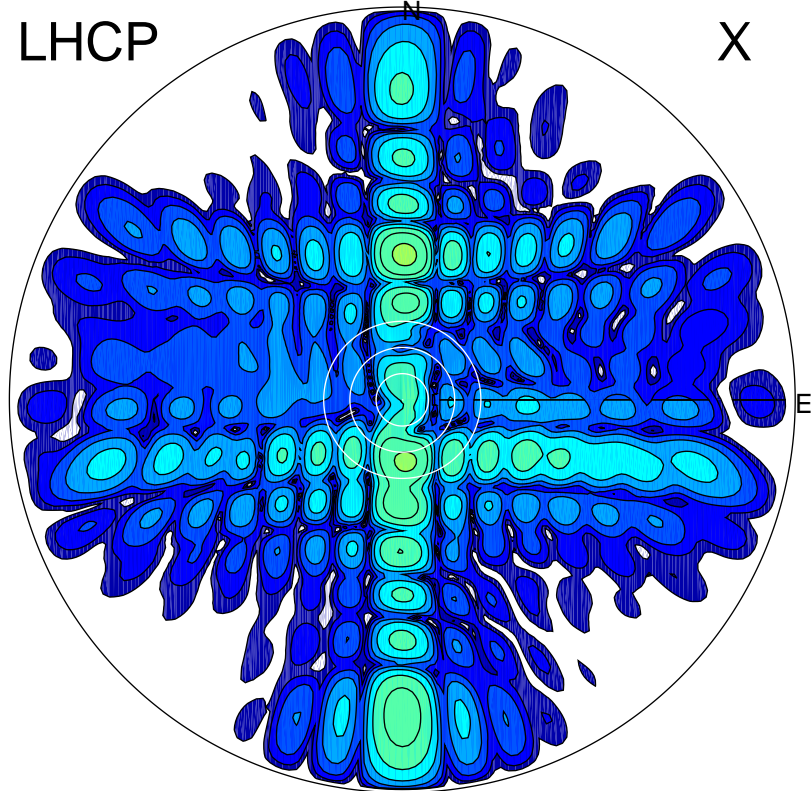


2013-10-18 12:39:02 A1 6.20000000 MHz 755.0 kW

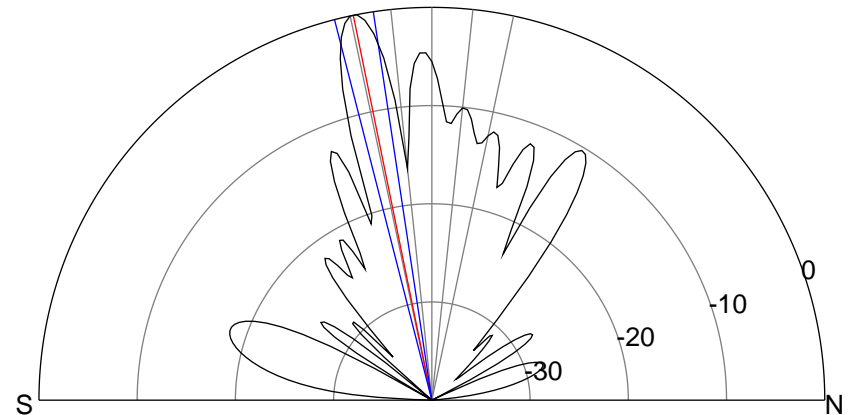
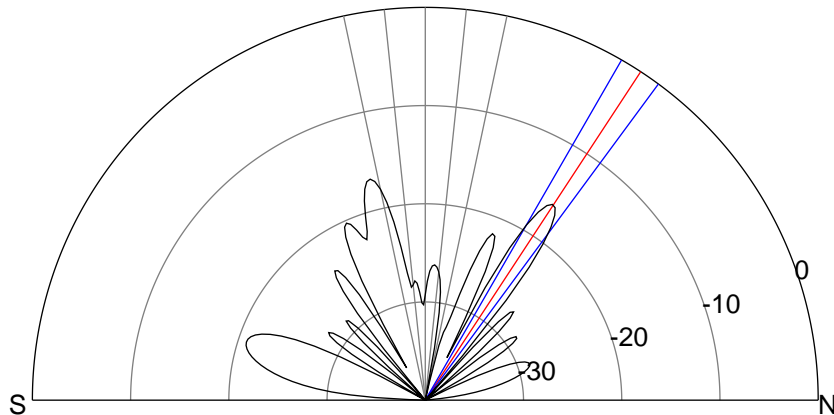
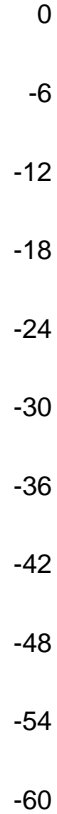
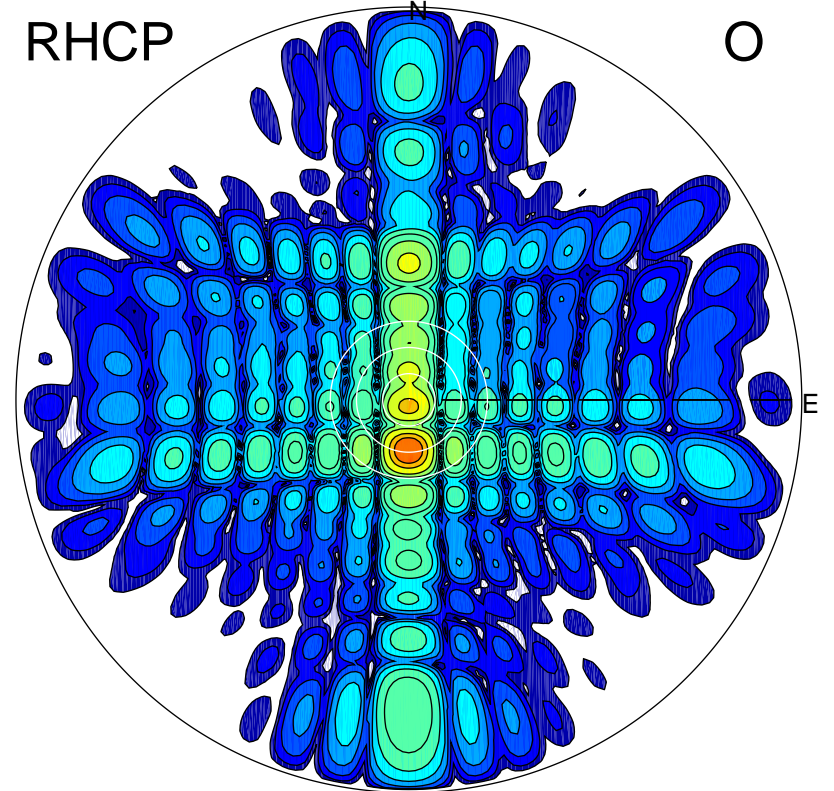
LHCP

X



RHCP

O



ERP 9.7 MW

Peak gain 11.1 dBi at Az 1 Zen 33
RHCP gain 16.0 dBi
N-S peak 11.0 dBi at Zen 33.3
N-S -3 dB beamwidth 6.4 deg.

ERP 399.4 MW

Peak gain 27.2 dBi at Az 181 Zen 12
LHCP gain 9.2 dBi
N-S peak 27.3 dBi at Zen -11.5
N-S -3 dB beamwidth 5.8 deg.