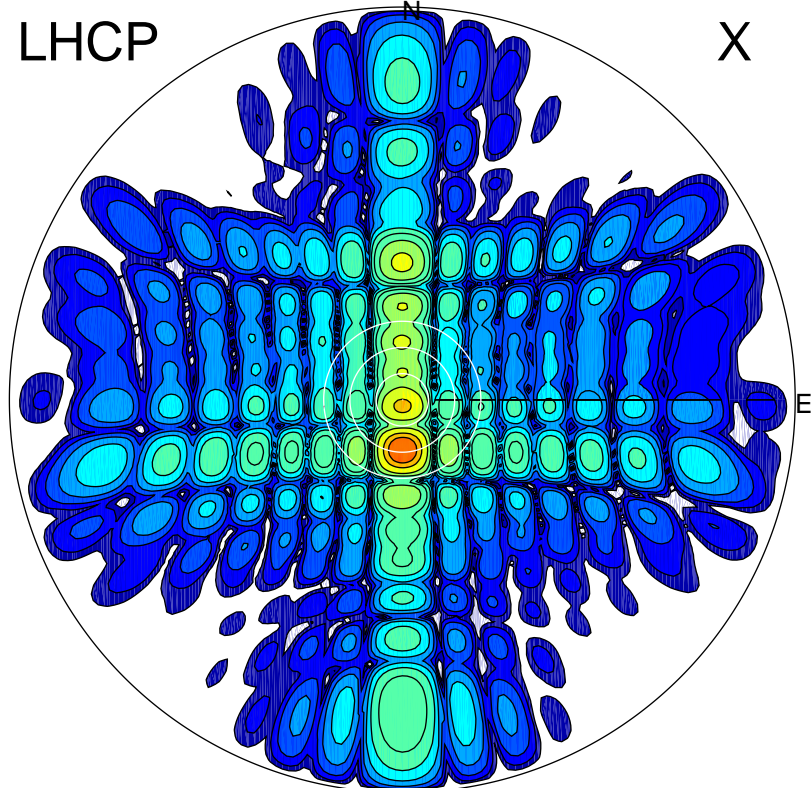


2013-10-18 12:18:02 A1 6.20000000 MHz 817.0 kW

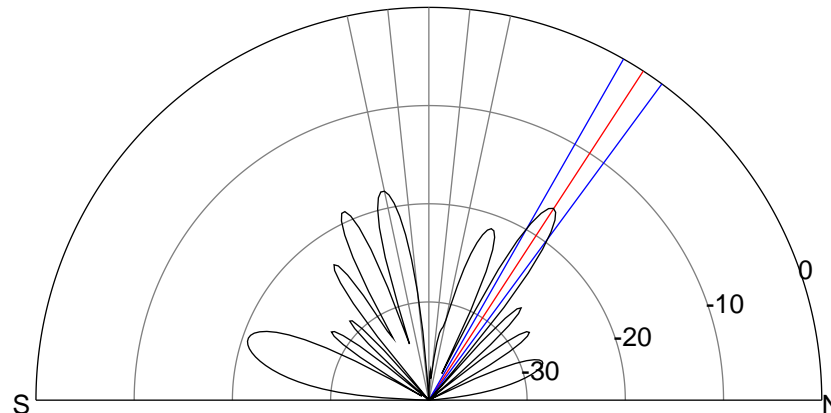
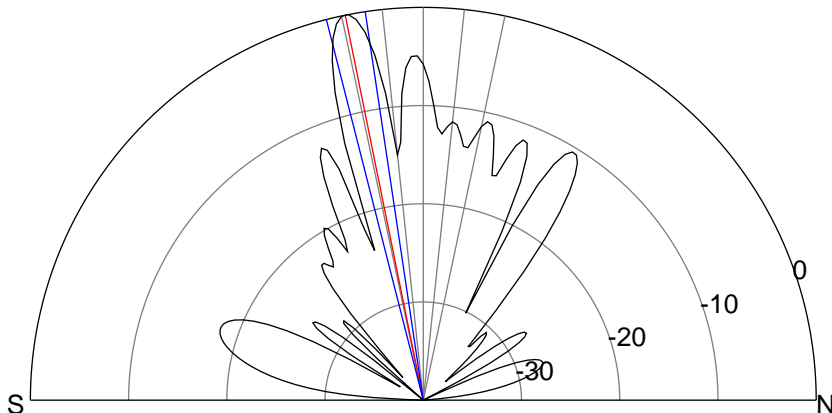
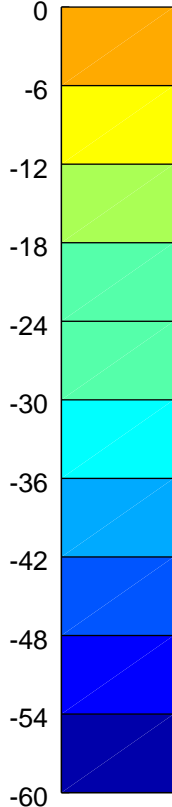
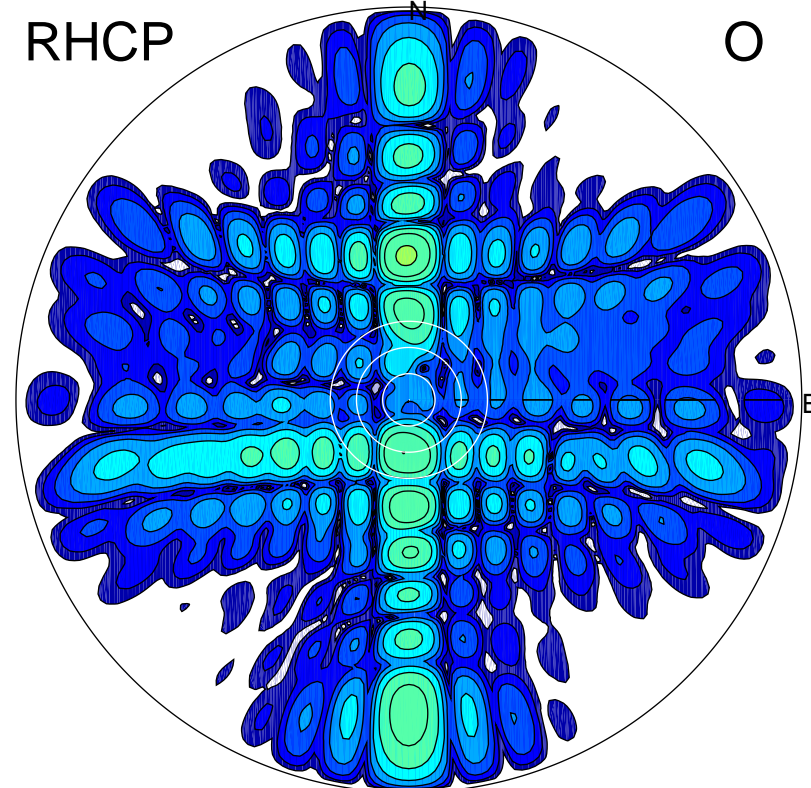
LHCP

X



RHCP

O



ERP 438.3 MW

Peak gain 27.3 dBi at Az 179 Zen 11
RHCP gain 8.5 dBi
N-S peak 27.4 dBi at Zen -11.5
N-S -3 dB beamwidth 5.8 deg.

ERP 9.5 MW

Peak gain 10.7 dBi at Az 359 Zen 33
LHCP gain 16.0 dBi
N-S peak 10.6 dBi at Zen 33.1
N-S -3 dB beamwidth 6.7 deg.