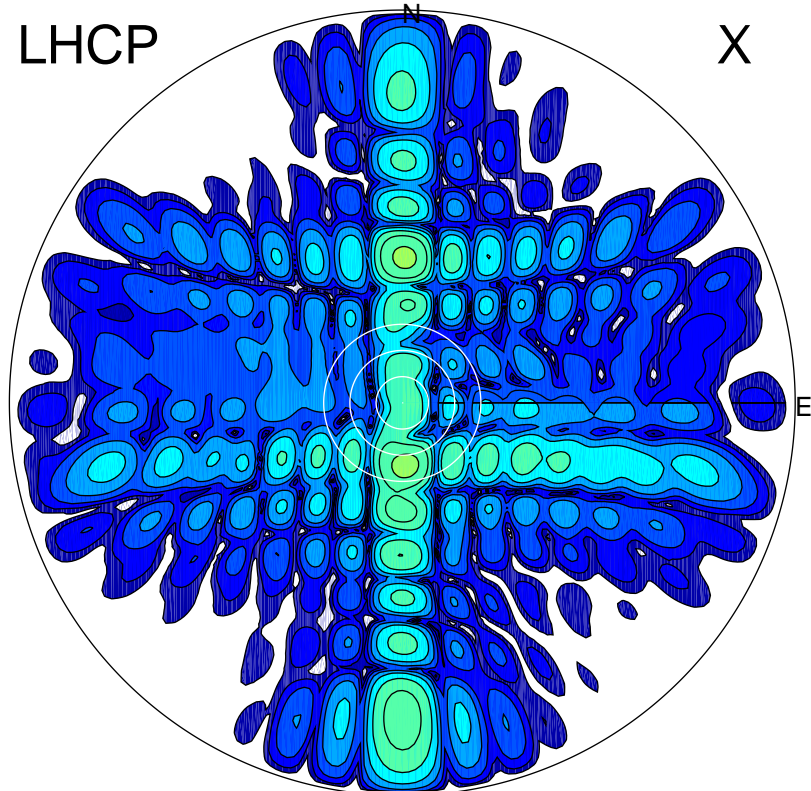


2013-10-18 12:02:02 A1 6.20000000 MHz 806.0 kW

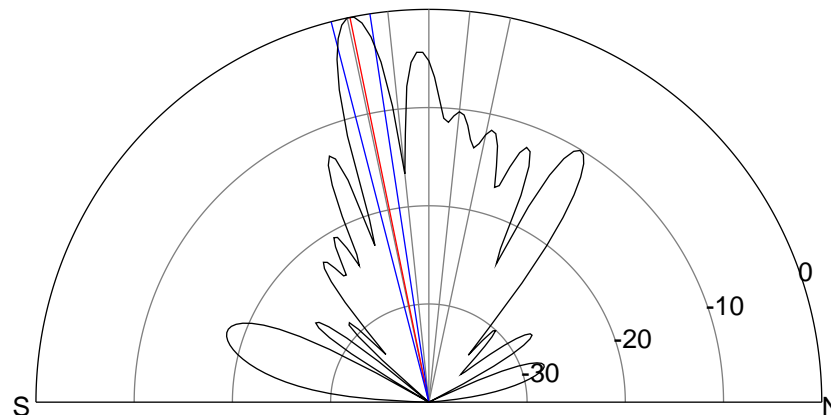
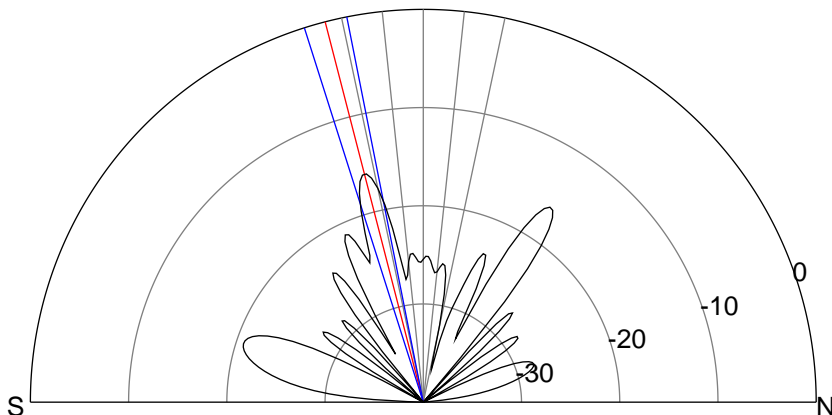
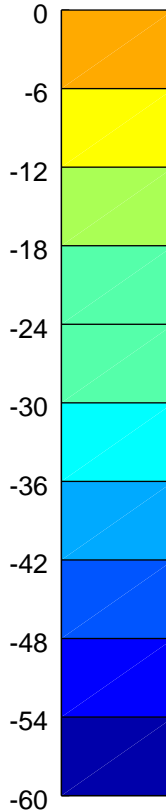
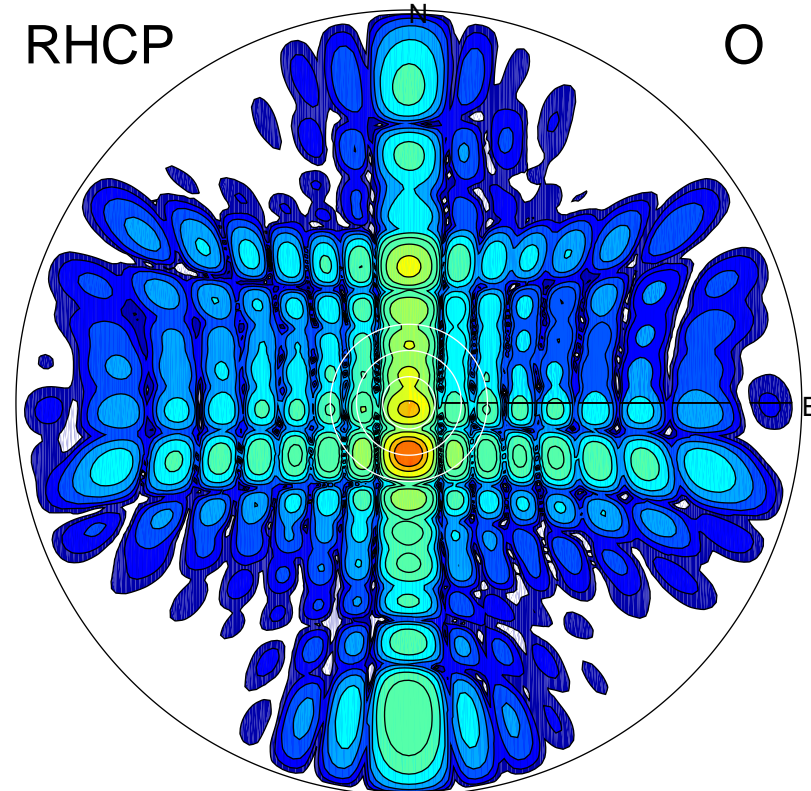
LHCP

X



RHCP

O



ERP 10.8 MW

Peak gain 11.3 dBi at Az 176 Zen 14
RHCP gain 25.1 dBi
N-S peak 11.2 dBi at Zen -14.5
N-S -3 dB beamwidth 6.4 deg.

ERP 421.1 MW

Peak gain 27.2 dBi at Az 181 Zen 12
LHCP gain 9.4 dBi
N-S peak 27.2 dBi at Zen -11.6
N-S -3 dB beamwidth 5.8 deg.