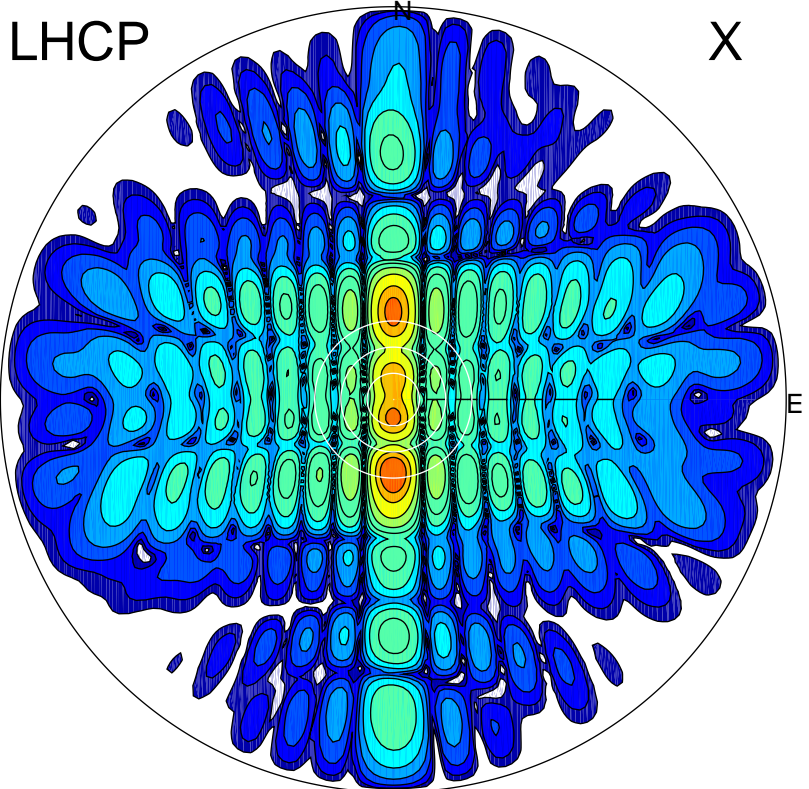


2013-07-27 09:02:01 A1 6.77000000 MHz 114.0 kW

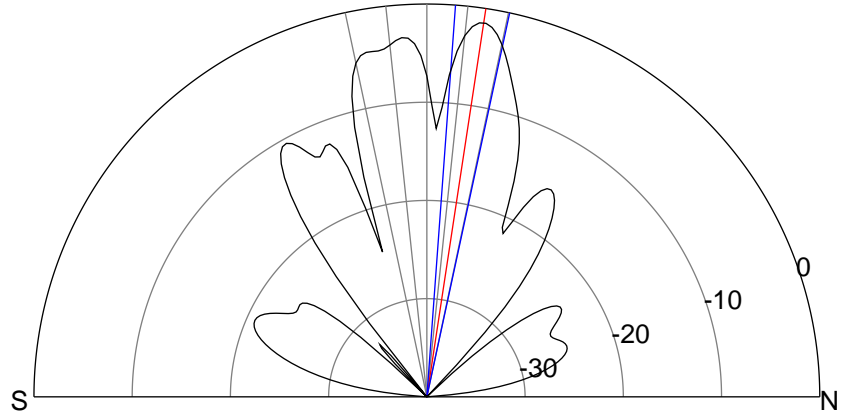
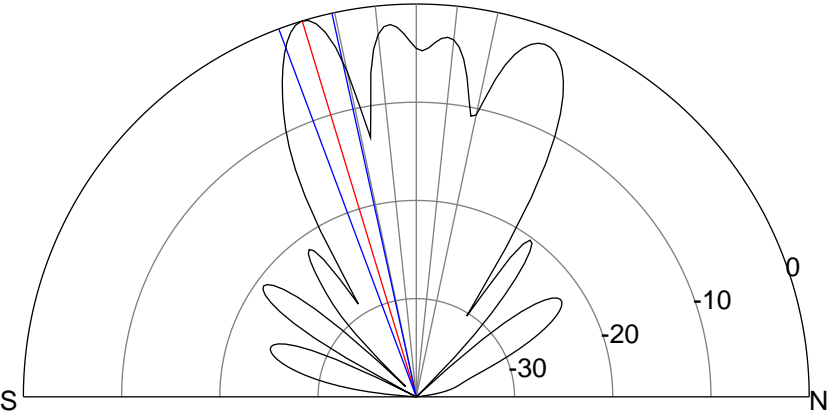
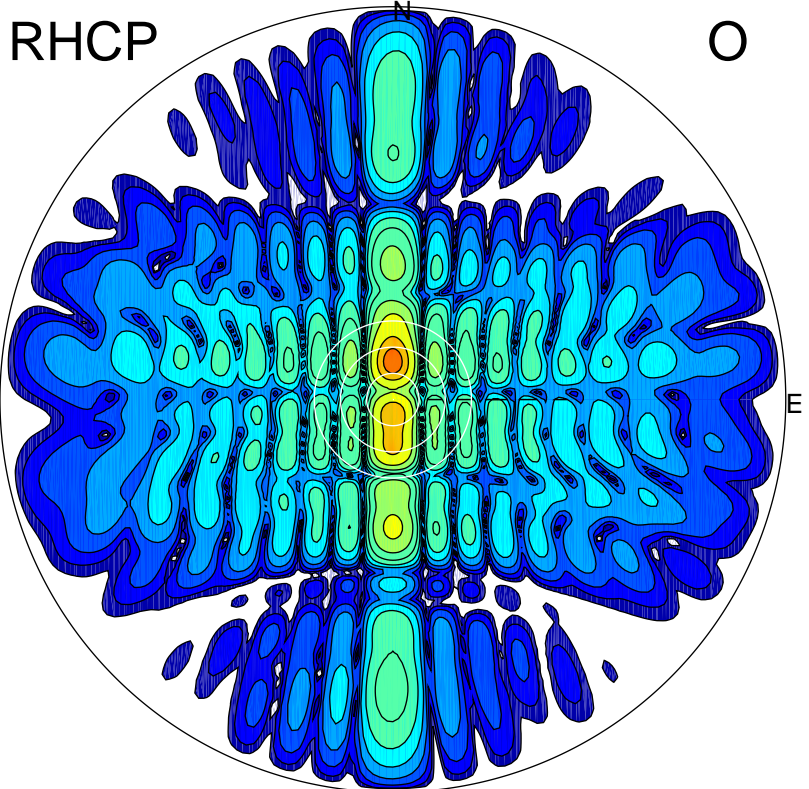
LHCP

X



RHCP

O



ERP 19.3 MW

Peak gain 22.3 dBi at Az 180 Zen 17
RHCP gain -2.3 dBi
N-S peak 22.3 dBi at Zen -16.9
N-S -3 dB beamwidth 8.1 deg.

ERP 13.7 MW

Peak gain 20.8 dBi at Az 0 Zen 9
LHCP gain 15.3 dBi
N-S peak 20.8 dBi at Zen 8.6
N-S -3 dB beamwidth 8.0 deg.