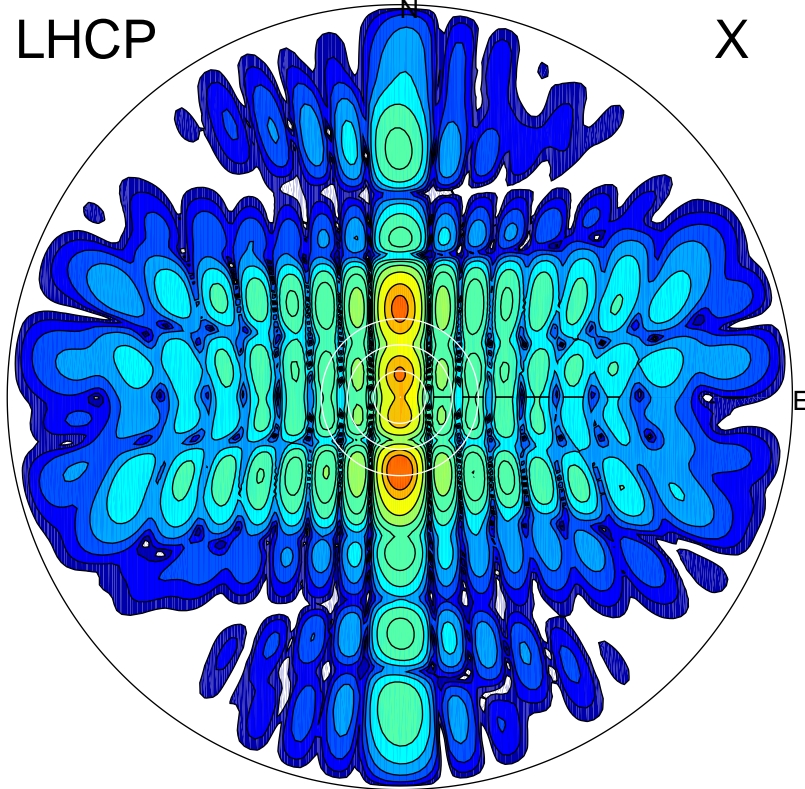


2013-07-27 09:00:46 A1 6.77000000 MHz 117.0 kW

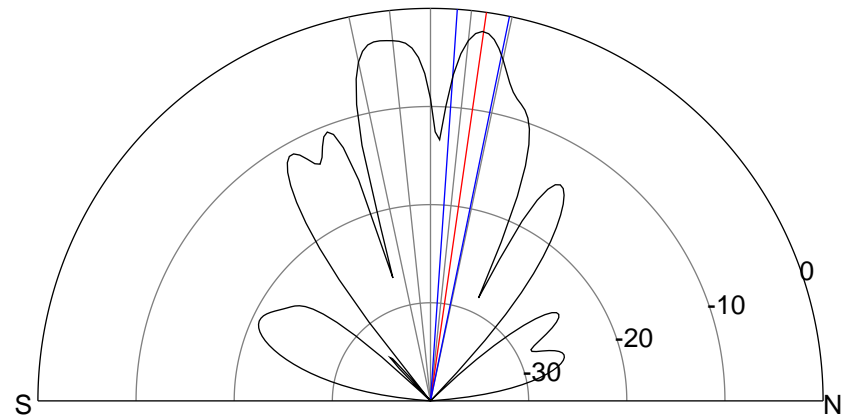
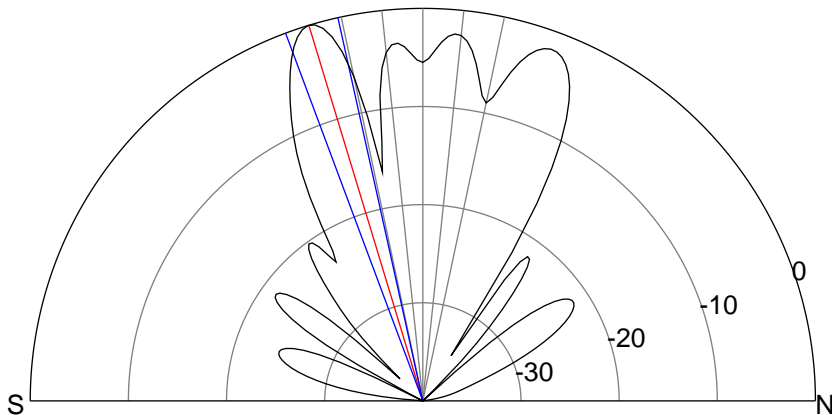
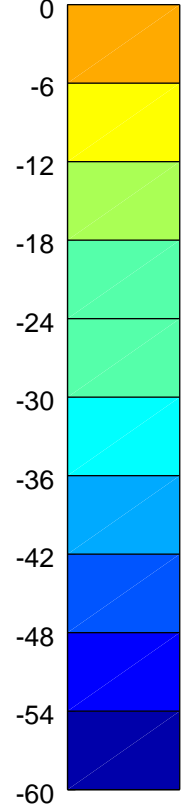
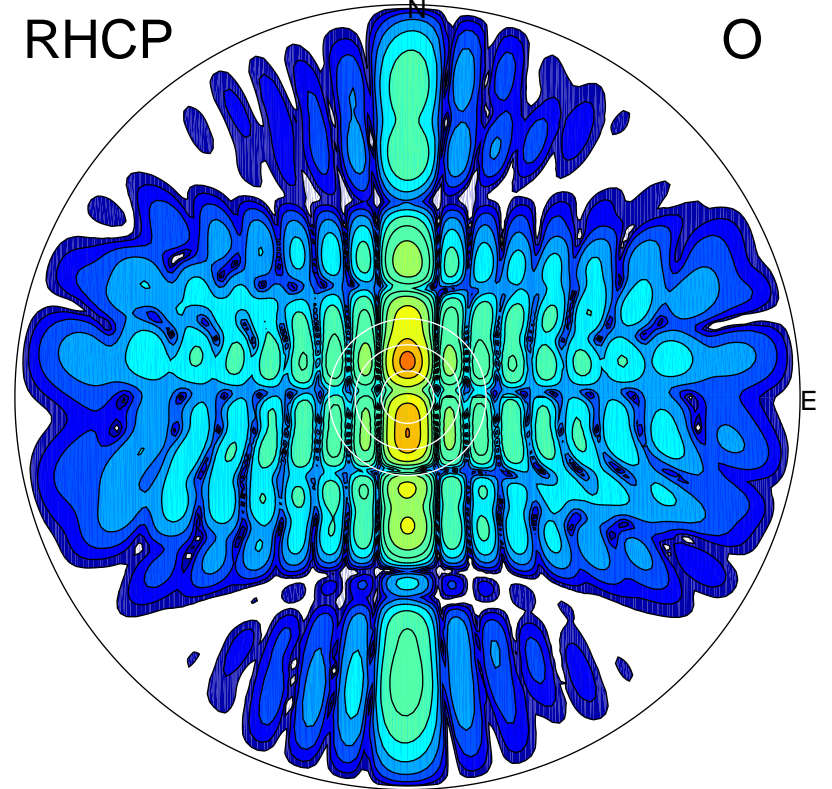
LHCP

X



RHCP

O



ERP 20.2 MW

Peak gain 22.4 dBi at Az 180 Zen 17
RHCP gain -4.5 dBi
N-S peak 22.4 dBi at Zen -16.9
N-S -3 dB beamwidth 8.0 deg.

ERP 12.8 MW

Peak gain 20.4 dBi at Az 0 Zen 8
LHCP gain 18.4 dBi
N-S peak 20.4 dBi at Zen 8.2
N-S -3 dB beamwidth 7.7 deg.