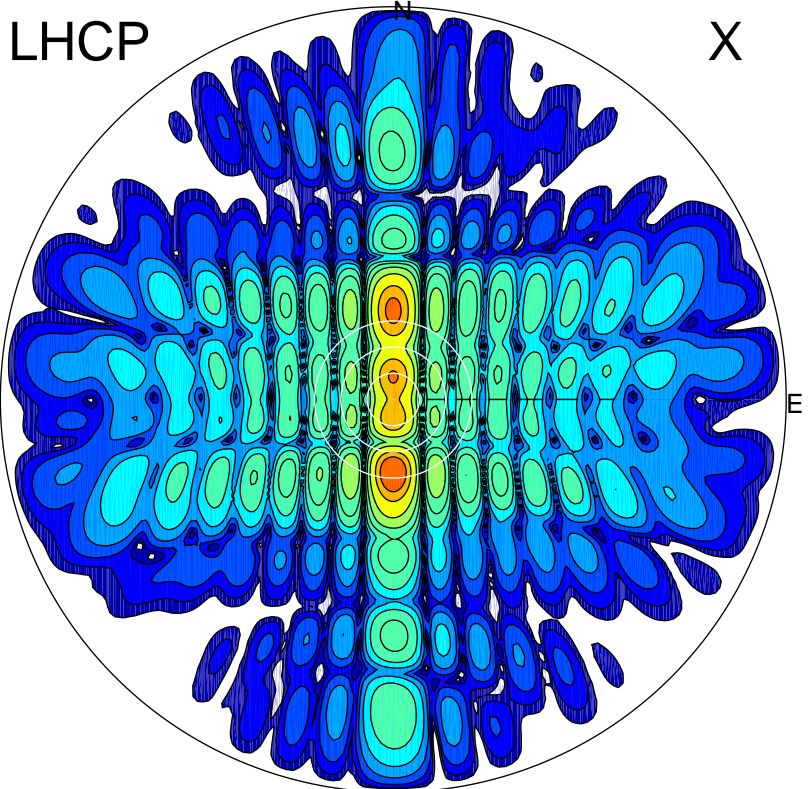


2013-07-27 09:00:02 A1 6.77000000 MHz 116.0 kW

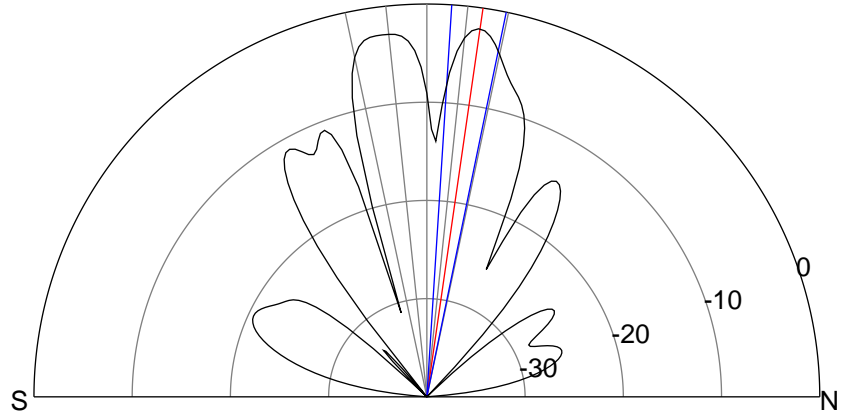
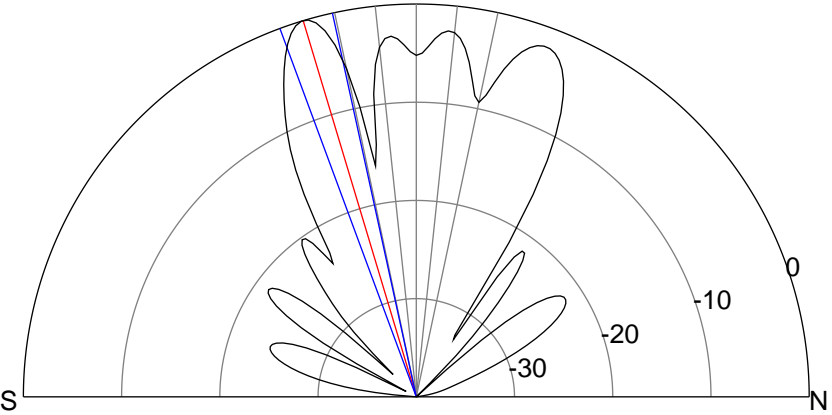
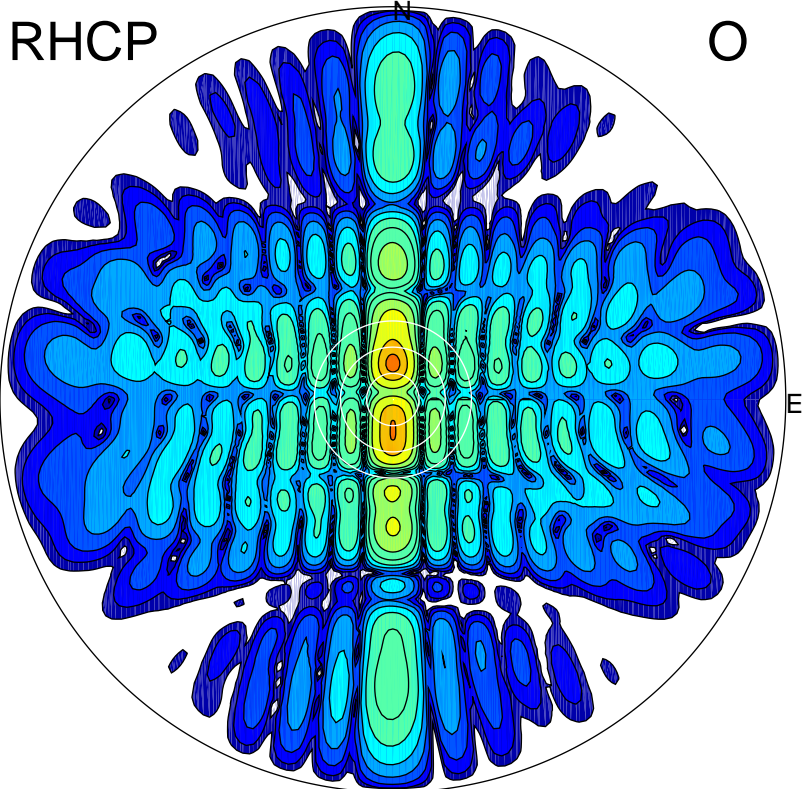
LHCP

X



RHCP

O



### ERP 20.0 MW

Peak gain 22.4 dBi at Az 180 Zen 17  
RHCP gain -8.7 dBi  
N-S peak 22.4 dBi at Zen -16.7  
N-S -3 dB beamwidth 8.0 deg.

### ERP 12.2 MW

Peak gain 20.2 dBi at Az 0 Zen 8  
LHCP gain 18.2 dBi  
N-S peak 20.2 dBi at Zen 8.2  
N-S -3 dB beamwidth 8.0 deg.