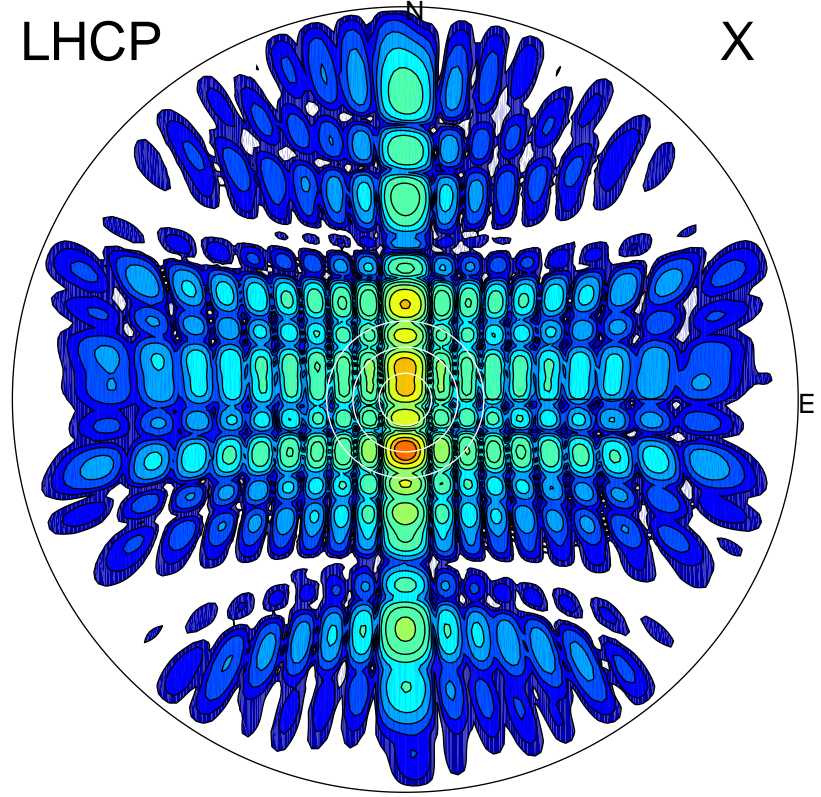


2012-10-20 14:54:27 A1 7.95300000 MHz 182.0 kW

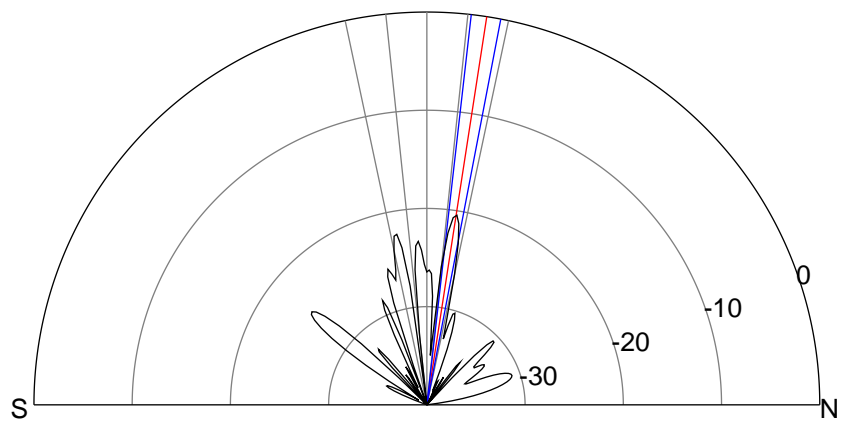
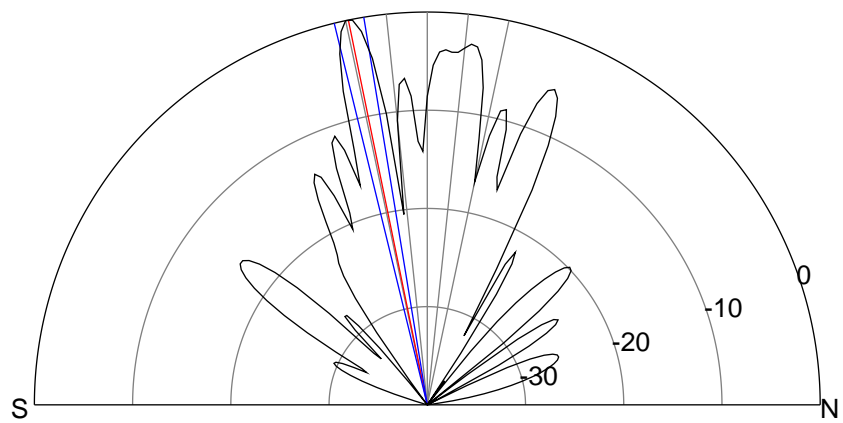
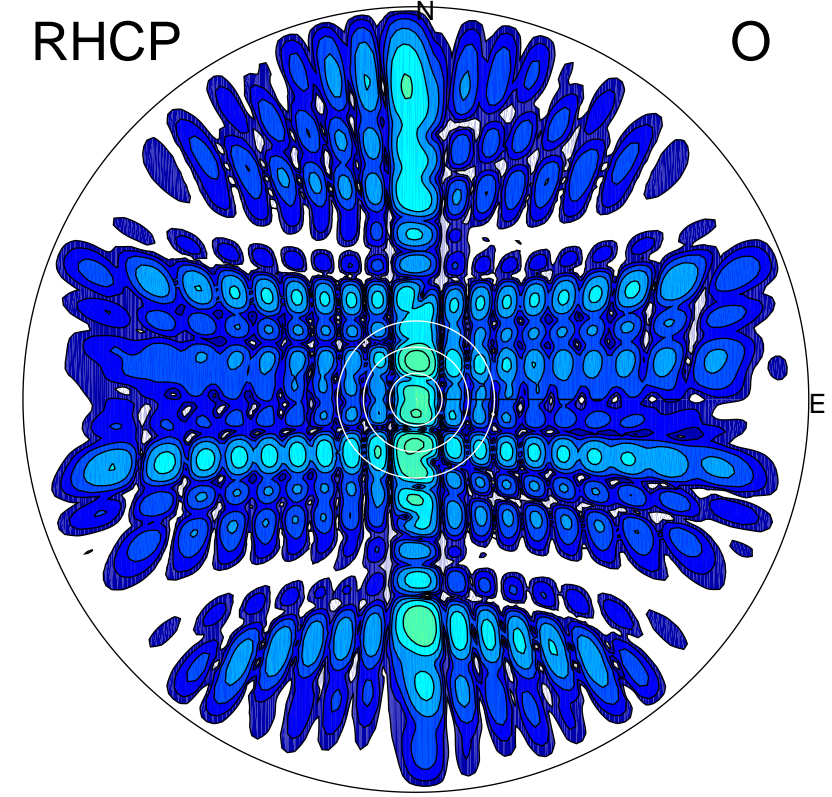
LHCP

X



RHCP

O



ERP 108.0 MW

Peak gain 27.7 dBi at Az 180 Zen 12
RHCP gain 3.8 dBi
N-S peak 27.8 dBi at Zen -11.6
N-S -3 dB beamwidth 4.4 deg.

ERP 1.0 MW

Peak gain 7.3 dBi at Az 2 Zen 9
LHCP gain 23.2 dBi
N-S peak 7.3 dBi at Zen 8.8
N-S -3 dB beamwidth 4.4 deg.