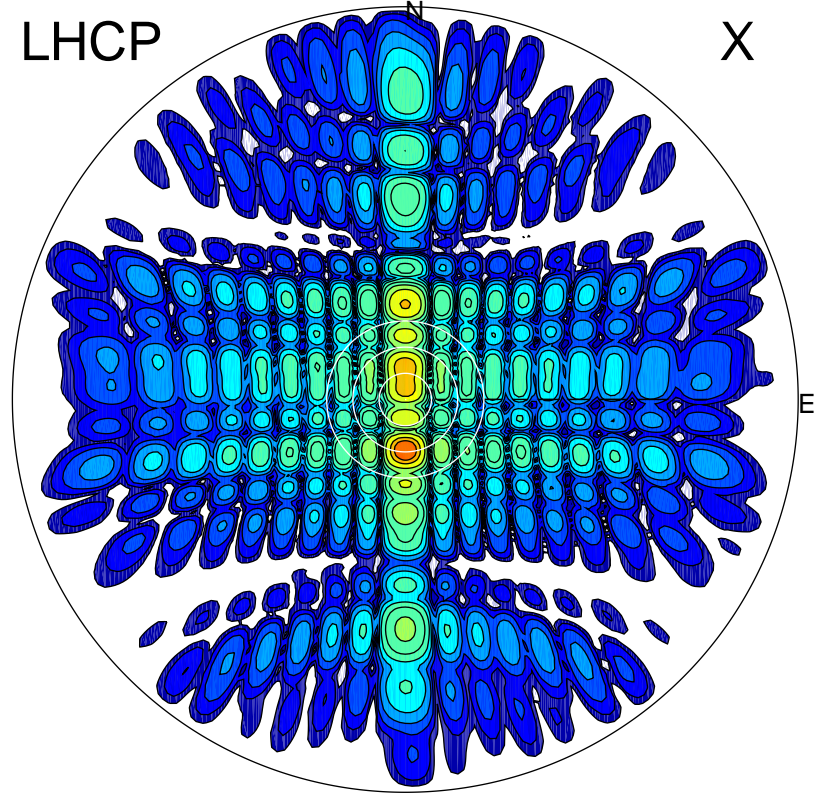


2012-10-20 14:53:27 A1 7.95300000 MHz 319.0 kW

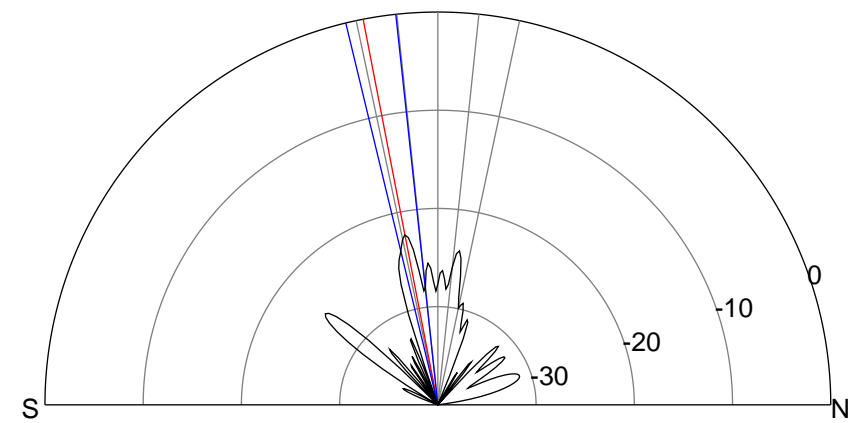
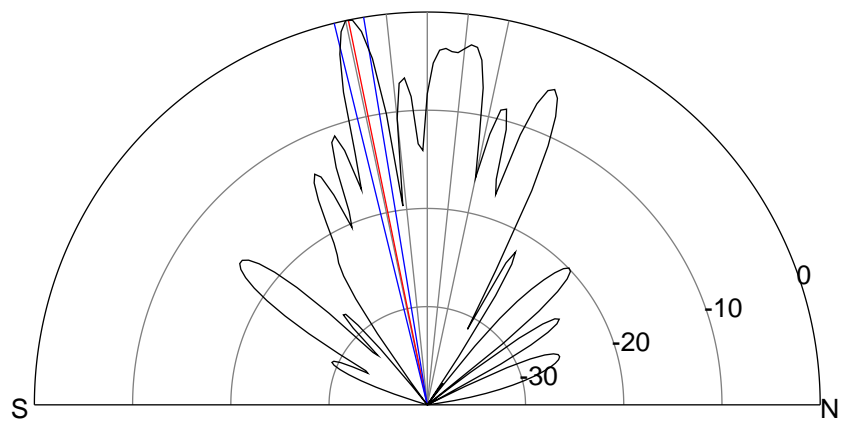
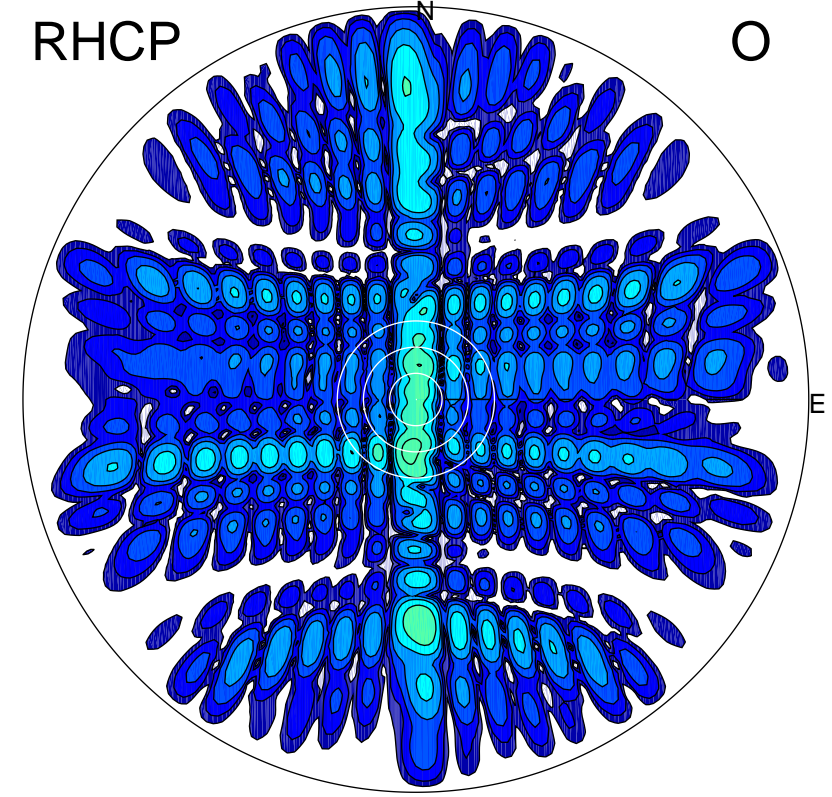
LHCP

X



RHCP

O



ERP 189.0 MW

Peak gain 27.7 dBi at Az 180 Zen 12
RHCP gain 5.0 dBi
N-S peak 27.8 dBi at Zen -11.6
N-S -3 dB beamwidth 4.4 deg.

ERP 1.2 MW

Peak gain 5.9 dBi at Az 187 Zen 12
LHCP gain 26.8 dBi
N-S peak 5.3 dBi at Zen -11.0
N-S -3 dB beamwidth 7.4 deg.