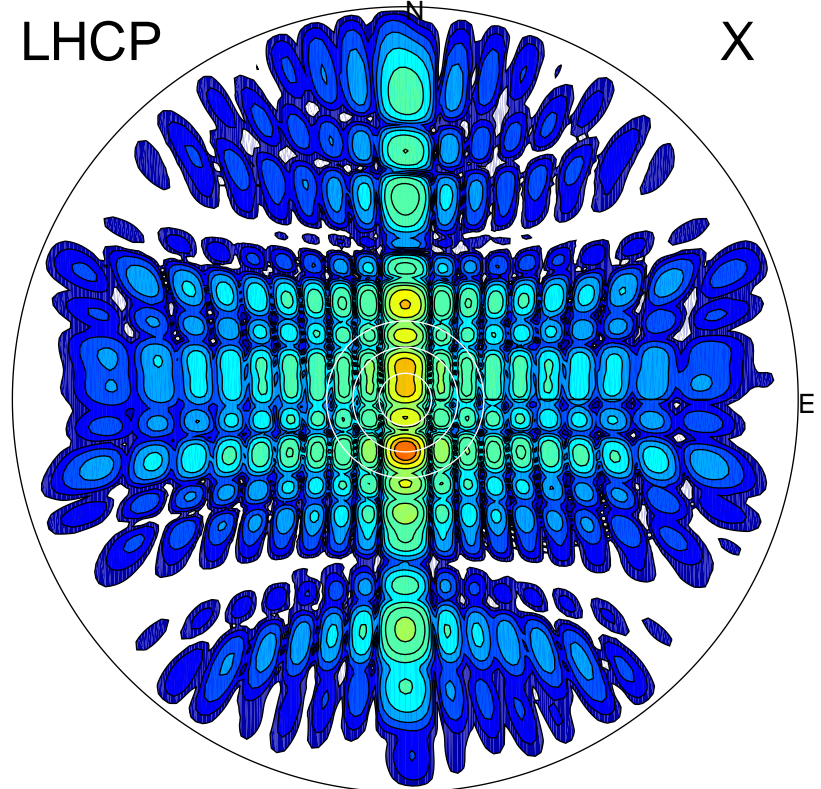


2012-10-20 14:52:27 A1 7.95300000 MHz 455.0 kW

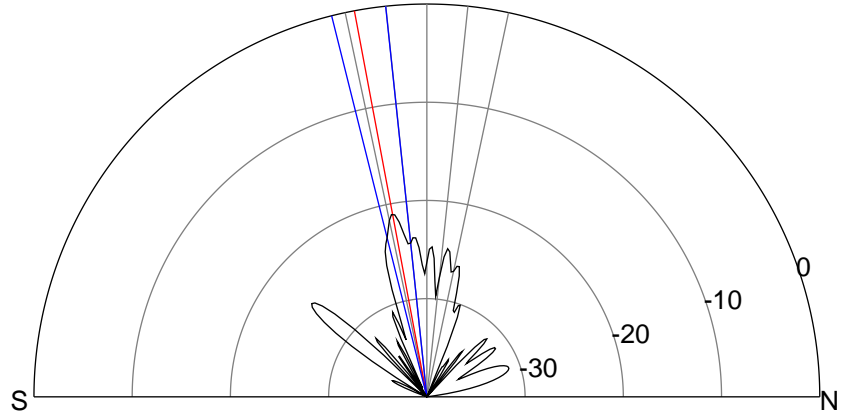
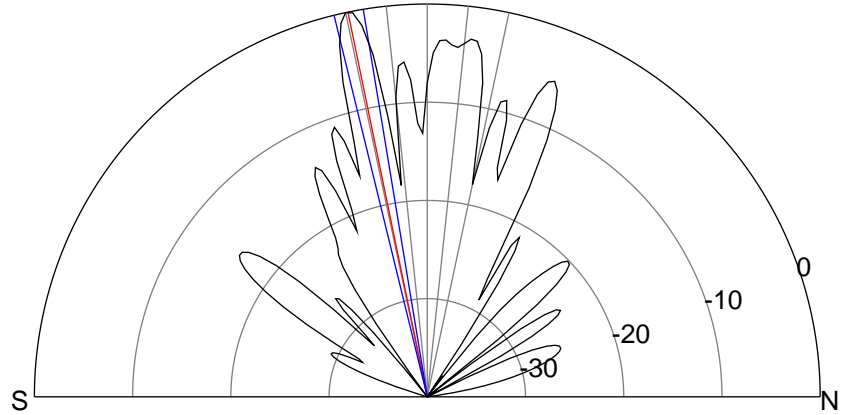
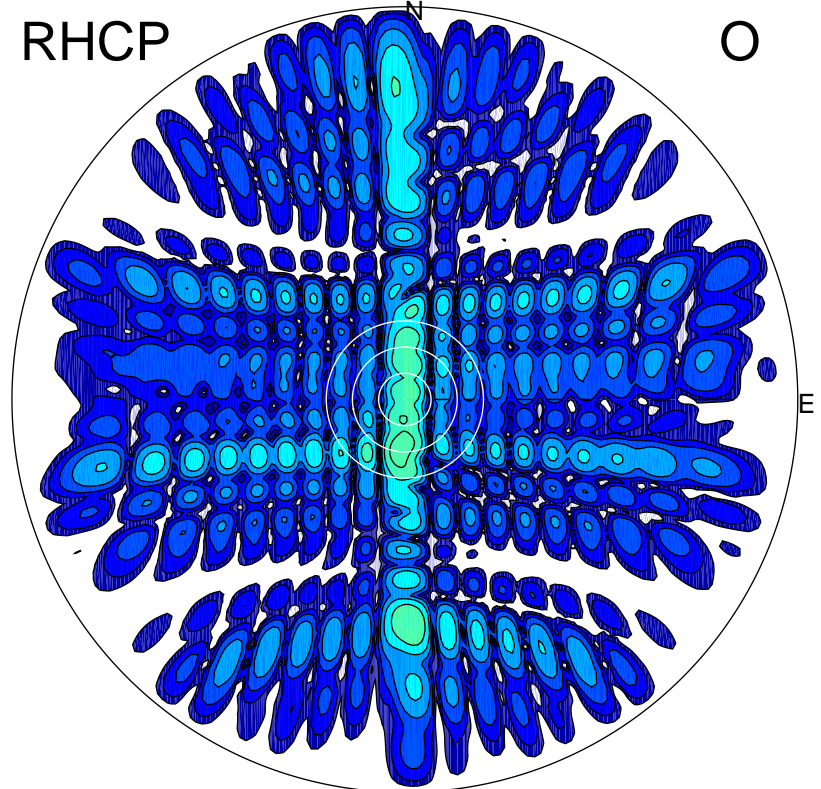
LHCP

X



RHCP

O



ERP 268.5 MW

Peak gain 27.7 dBi at Az 180 Zen 12
RHCP gain 6.1 dBi
N-S peak 27.8 dBi at Zen -11.6
N-S -3 dB beamwidth 4.3 deg.

ERP 2.2 MW

Peak gain 6.9 dBi at Az 185 Zen 11
LHCP gain 27.1 dBi
N-S peak 6.7 dBi at Zen -10.6
N-S -3 dB beamwidth 8.0 deg.