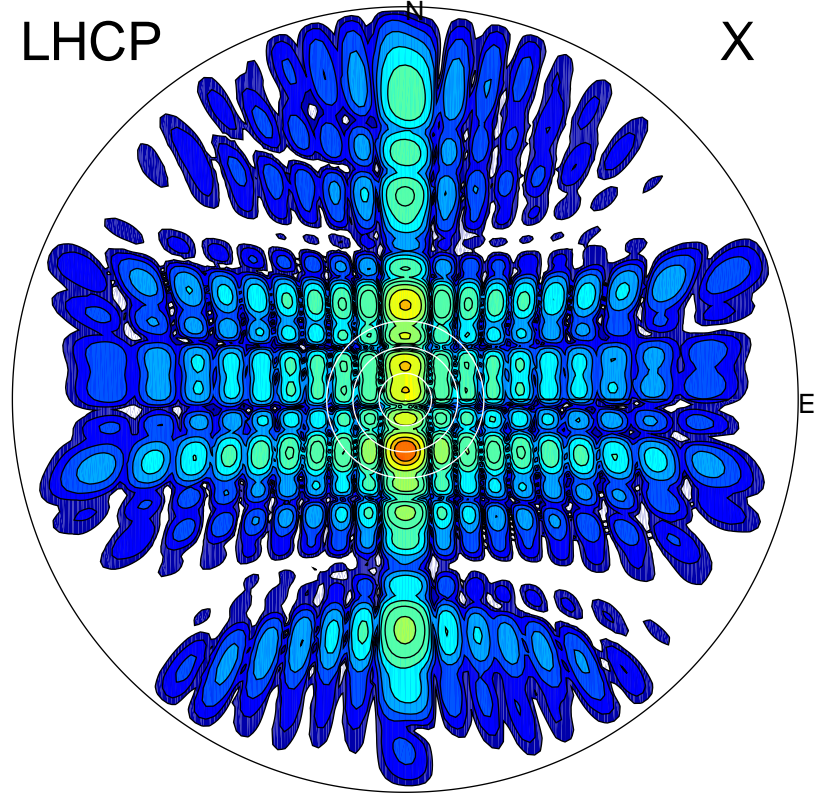


2012-10-20 14:51:27 A1 7.95300000 MHz 687.0 kW

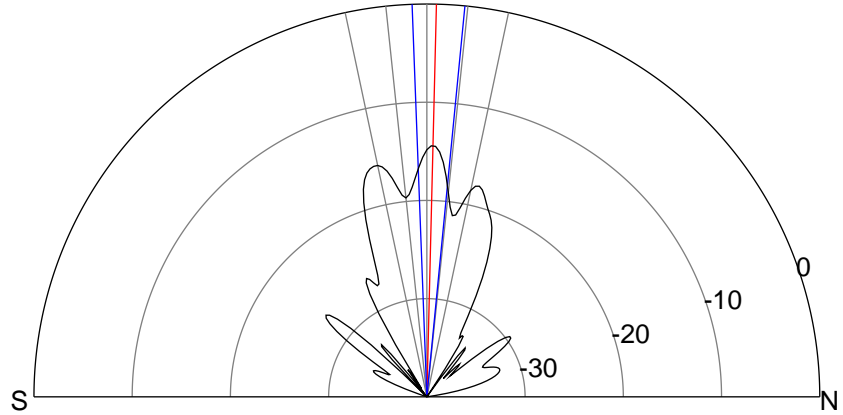
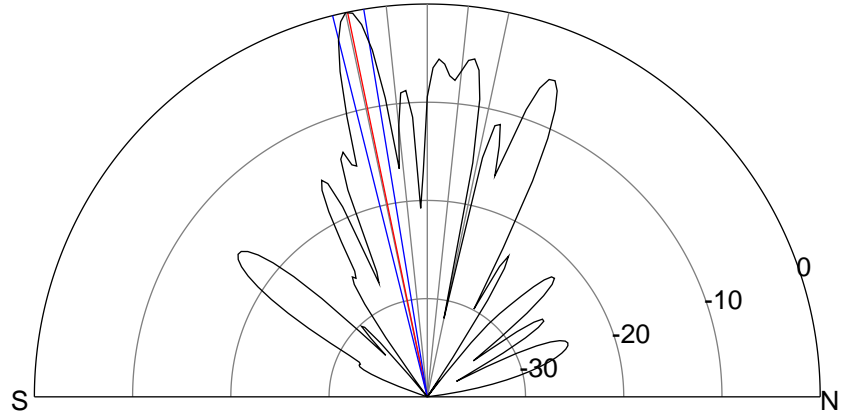
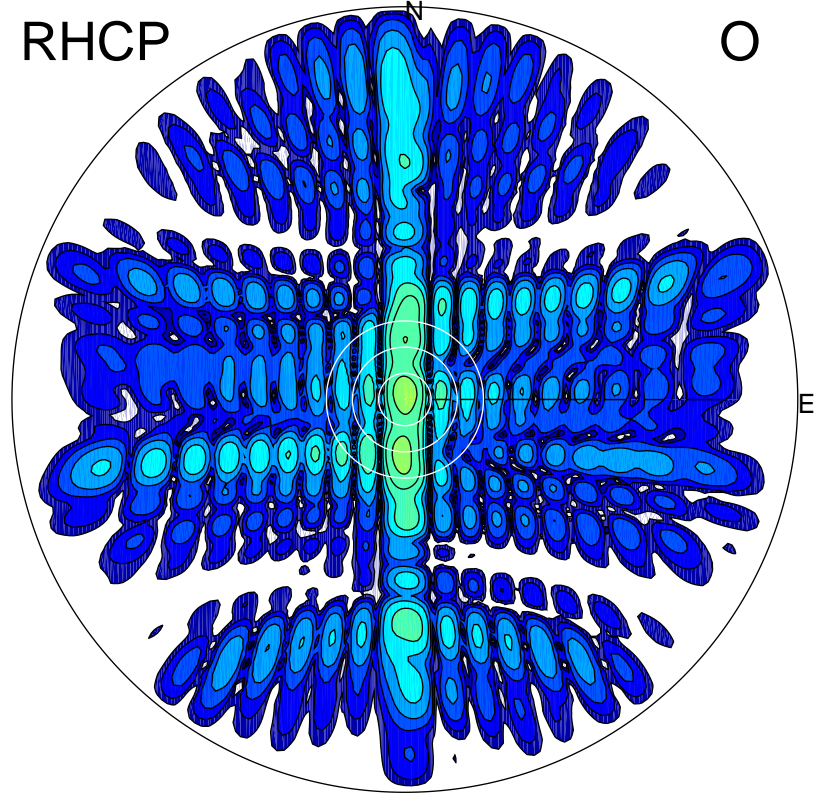
LHCP

X



RHCP

O



### ERP 460.2 MW

Peak gain 28.3 dBi at Az 180 Zen 12  
RHCP gain 12.3 dBi  
N-S peak 28.3 dBi at Zen -11.7  
N-S -3 dB beamwidth 4.6 deg.

### ERP 16.6 MW

Peak gain 13.8 dBi at Az 6 Zen 1  
LHCP gain 21.8 dBi  
N-S peak 13.9 dBi at Zen 1.4  
N-S -3 dB beamwidth 7.7 deg.