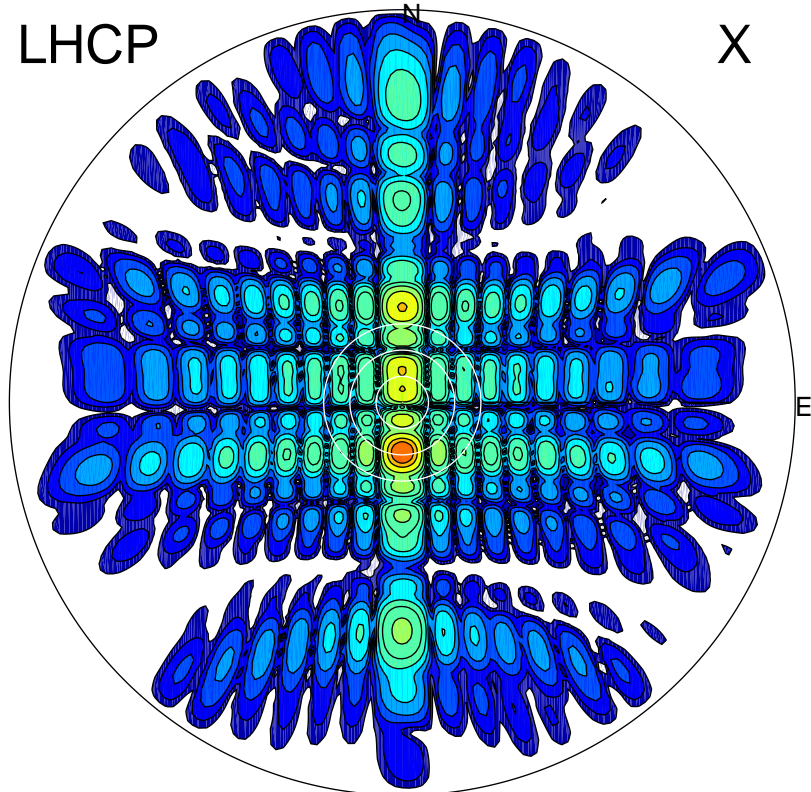


2012-10-20 14:46:27 A1 7.95300000 MHz 67.0 kW

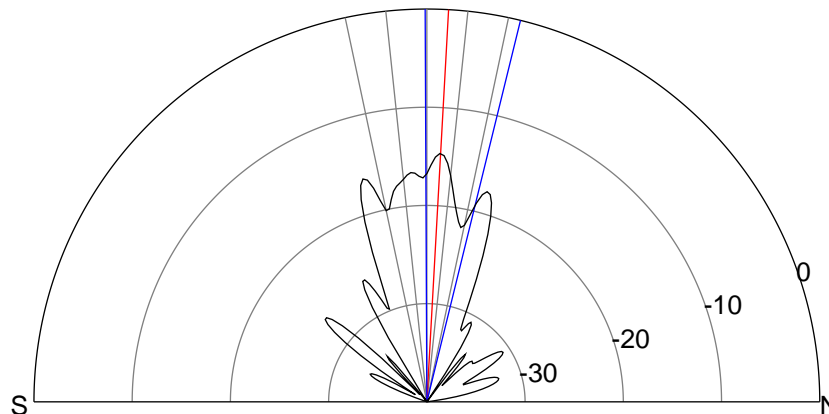
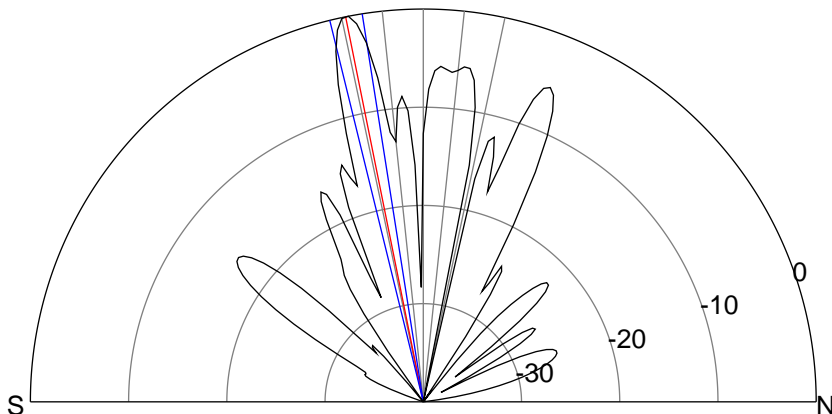
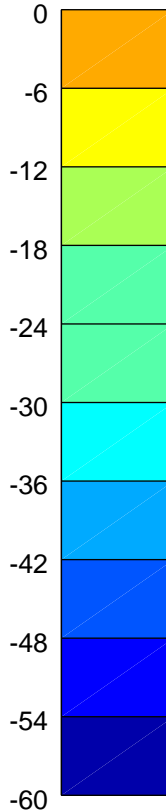
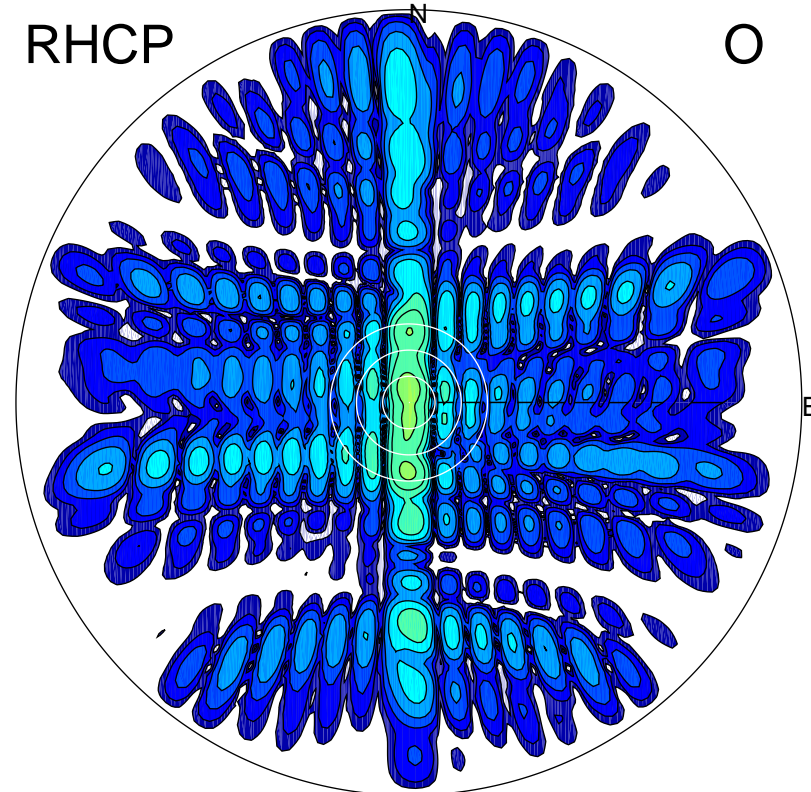
LHCP

X



RHCP

O



### ERP 45.5 MW

Peak gain 28.3 dBi at Az 180 Zen 11  
RHCP gain 8.3 dBi  
N-S peak 28.4 dBi at Zen -11.4  
N-S -3 dB beamwidth 4.8 deg.

### ERP 1.6 MW

Peak gain 13.6 dBi at Az 358 Zen 3  
LHCP gain 22.5 dBi  
N-S peak 13.6 dBi at Zen 3.2  
N-S -3 dB beamwidth 14.0 deg.