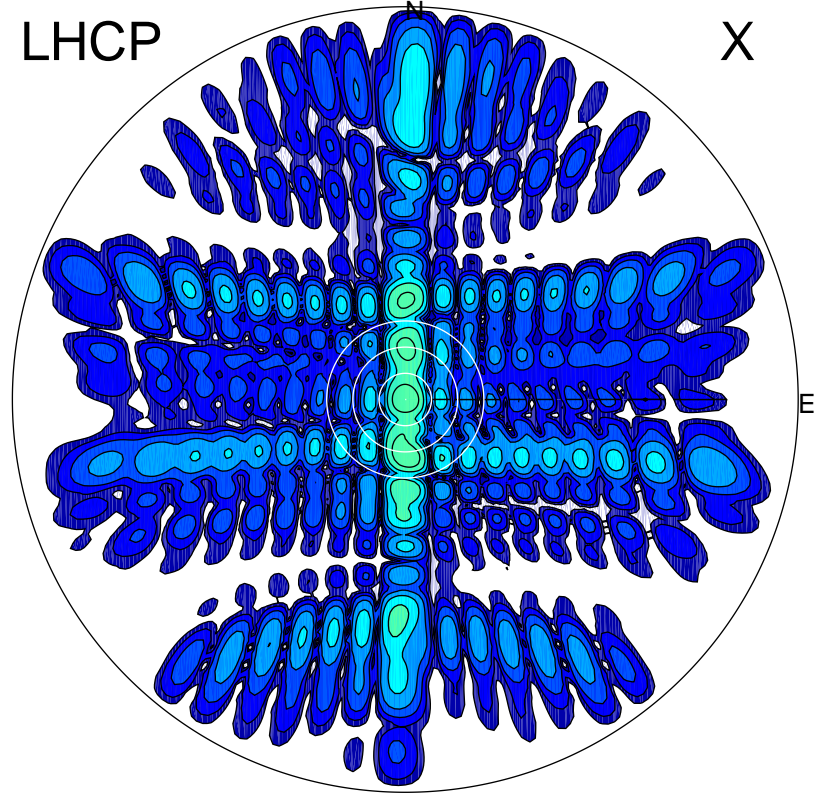


2012-10-20 14:38:27 A1 7.95300000 MHz 404.0 kW

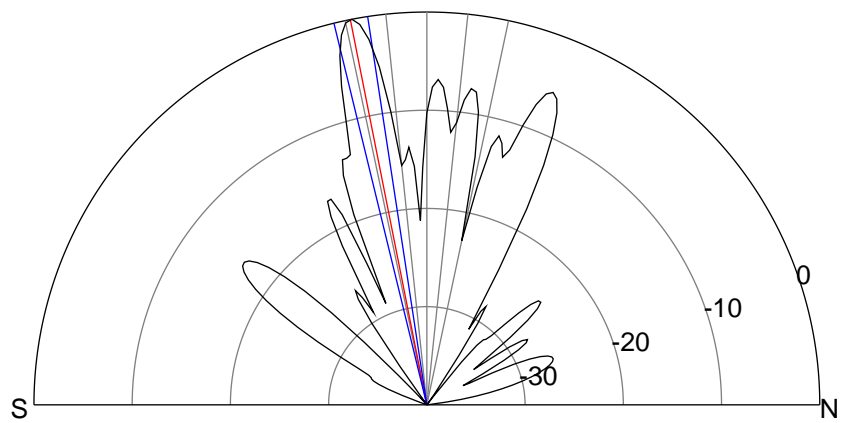
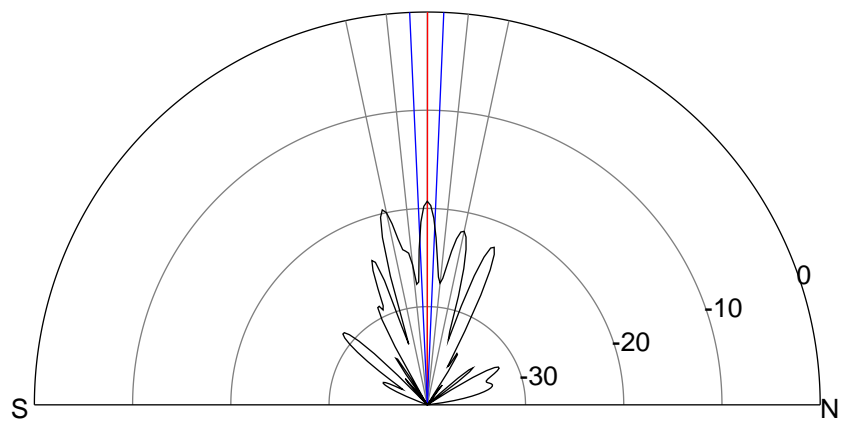
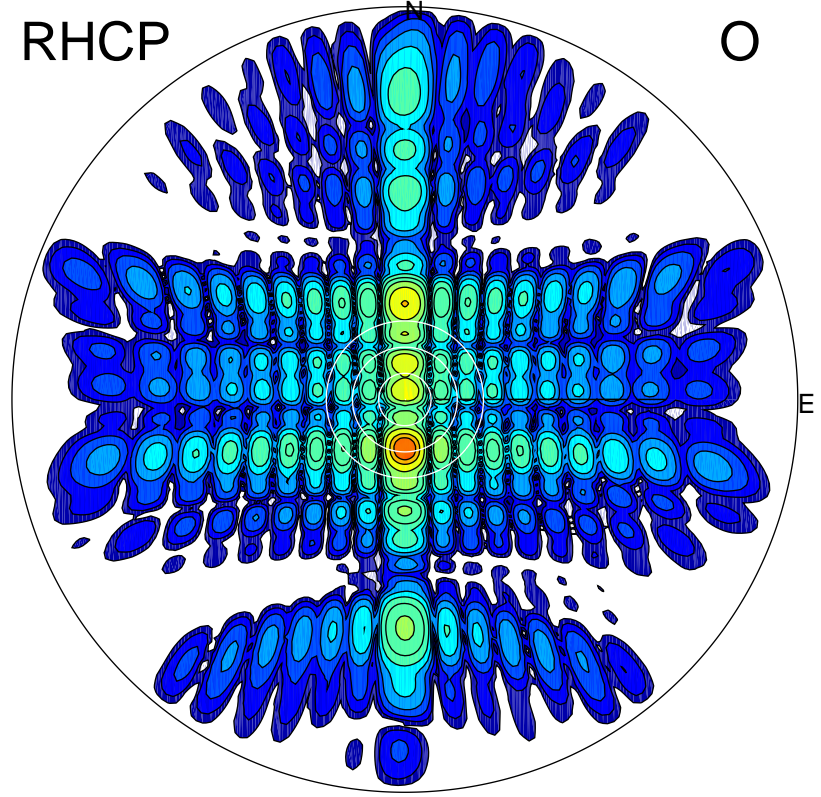
LHCP

X



RHCP

O



### ERP 3.7 MW

Peak gain 9.6 dBi at Az 14 Zen 0  
RHCP gain 18.6 dBi  
N-S peak 9.6 dBi at Zen 0.0  
N-S -3 dB beamwidth 5.0 deg.

### ERP 312.0 MW

Peak gain 28.9 dBi at Az 180 Zen 11  
LHCP gain 7.7 dBi  
N-S peak 28.9 dBi at Zen -11.2  
N-S -3 dB beamwidth 5.0 deg.