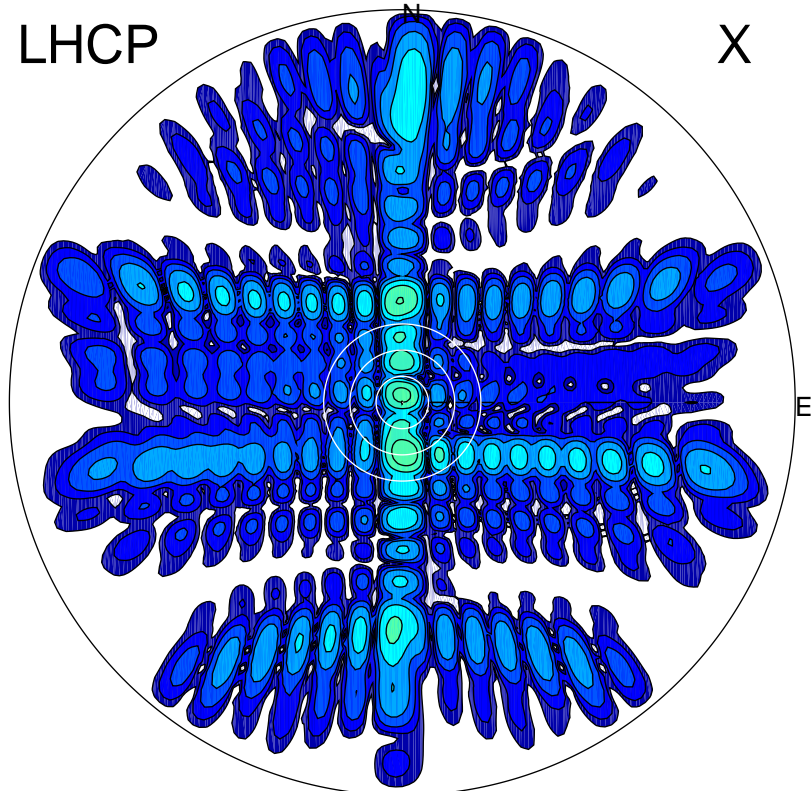


2012-10-20 14:31:27 A1 7.95300000 MHz 79.0 kW

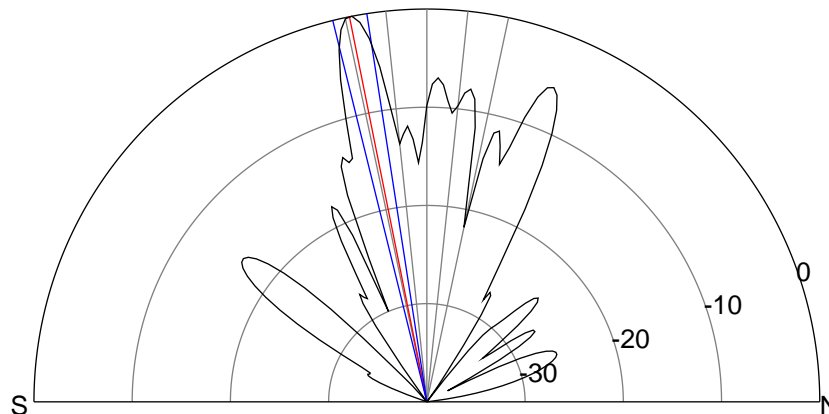
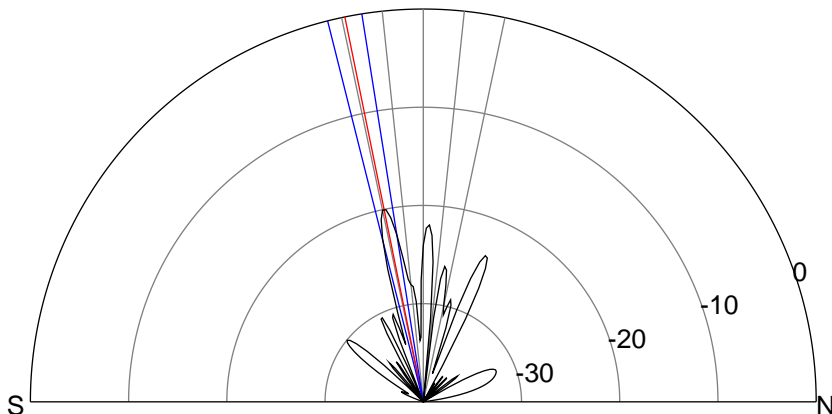
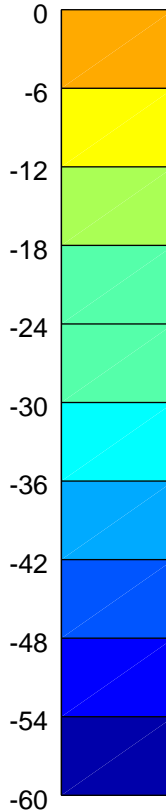
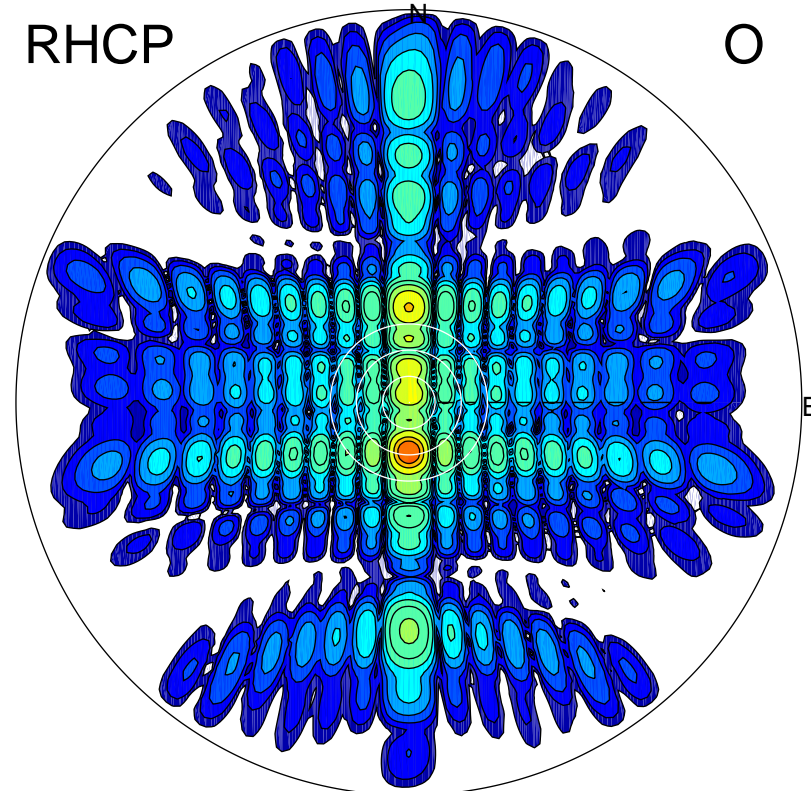
LHCP

X



RHCP

O



ERP 0.6 MW

Peak gain 9.0 dBi at Az 176 Zen 12
RHCP gain 28.4 dBi
N-S peak 8.9 dBi at Zen -11.5
N-S -3 dB beamwidth 5.1 deg.

ERP 60.2 MW

Peak gain 28.8 dBi at Az 180 Zen 11
LHCP gain 8.8 dBi
N-S peak 28.9 dBi at Zen -11.4
N-S -3 dB beamwidth 5.1 deg.