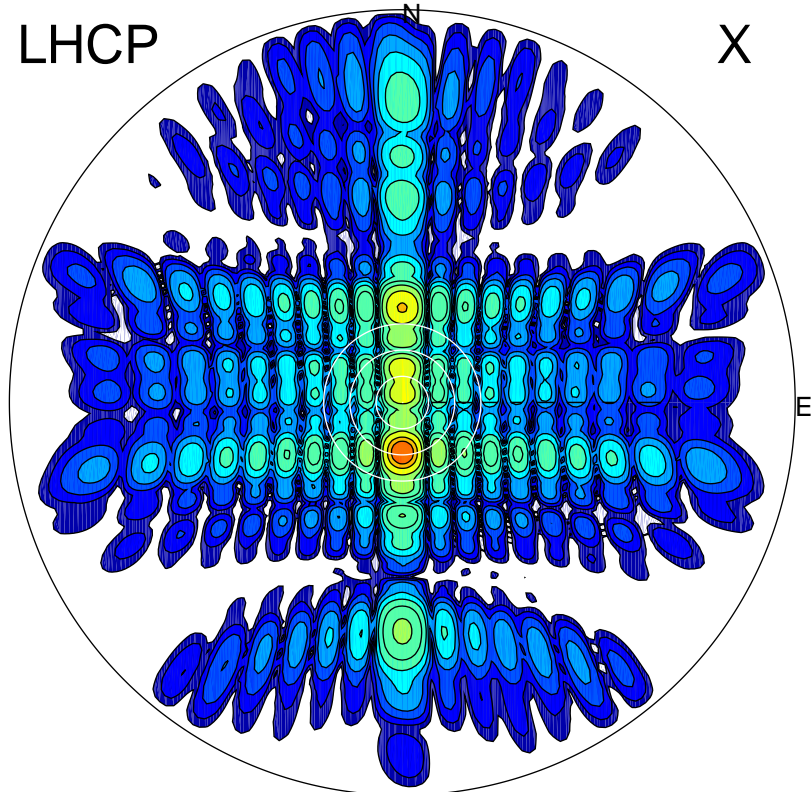


2012-10-20 14:25:27 A1 7.95300000 MHz 74.0 kW

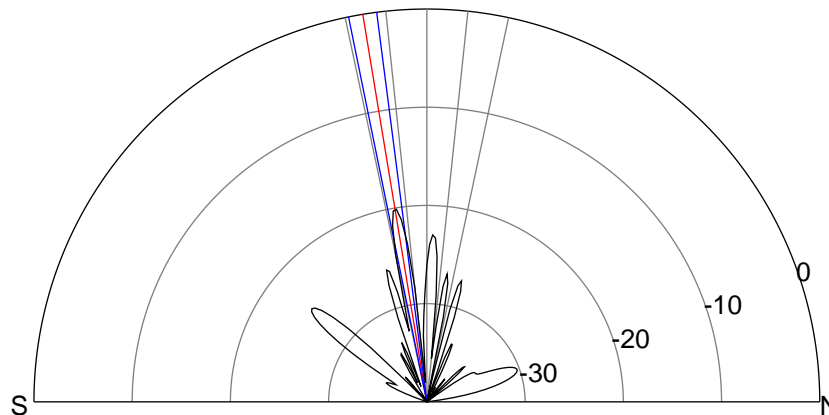
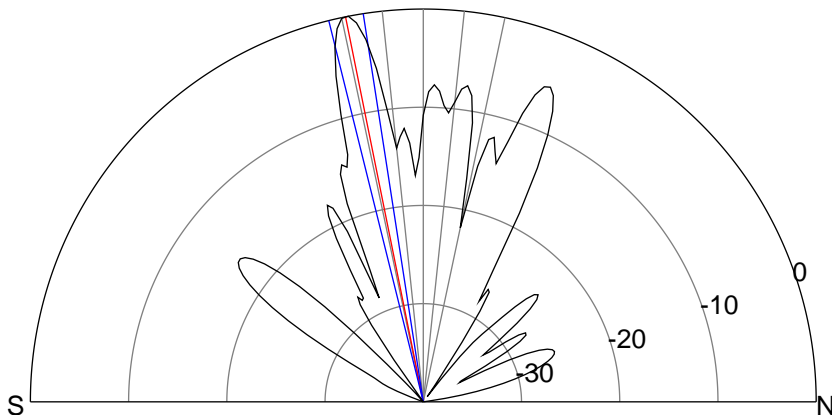
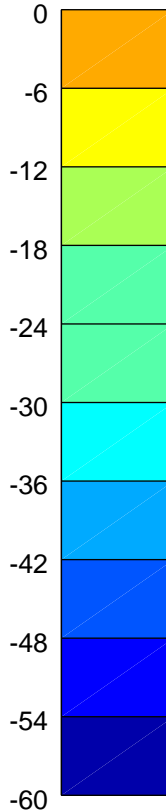
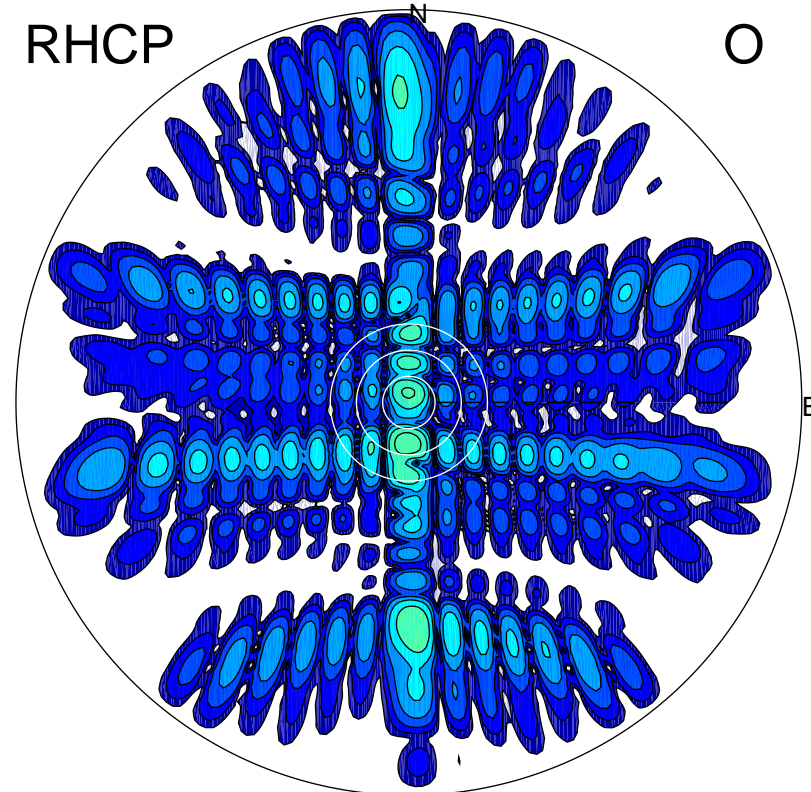
LHCP

X



RHCP

O



### ERP 56.6 MW

Peak gain 28.8 dBi at Az 180 Zen 11  
RHCP gain 7.1 dBi  
N-S peak 28.9 dBi at Zen -11.4  
N-S -3 dB beamwidth 5.1 deg.

### ERP 0.6 MW

Peak gain 8.7 dBi at Az 182 Zen 9  
LHCP gain 26.1 dBi  
N-S peak 8.8 dBi at Zen -9.4  
N-S -3 dB beamwidth 4.2 deg.